

SURFACE VEHICLE STANDARD

Submitted for recognition as an American National Standard

Issued 1979-04
Reaffirmed 1985-01

Superseding J1254 APR79

COMPONENT NOMENCLATURE—FELLER BUNCHER

- 1. Scope**—This recommended practice includes names of major components and parts peculiar to this type of machine.

Illustrations used here are not intended to include all existing commercial machines or to be exactly descriptive of any particular machine. They have been provided to describe the principles to be used in applying this recommended practice.

- 2. Definition**—A feller buncher is a self-propelled machine designed to fell standing trees and arrange them in bunches on the ground.

Two particular types of feller bunchers have been identified. They are:

- 2.1 Swing-to-Bunch**—This type is characterized by movement of the booms and felling head during the bunching operation.

- 2.2 Travel-to-Bunch**—This type is characterized by movement of the booms, felling head, and machine during one cycle of bunching operation and can include pre-accumulation in the felling head or on the machine.

3. Nomenclature

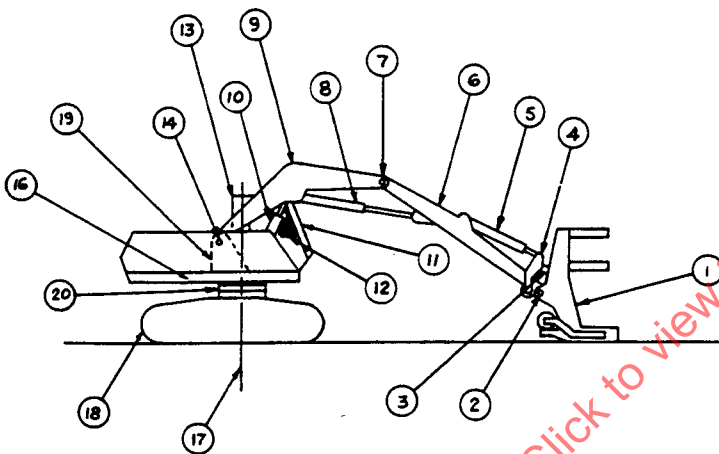
1. Felling Head—See SAE J1272
2. Felling Head Pivot
3. Felling Head Link
4. Lever
5. Felling Head Cylinder
6. Stick Boom
7. Stick Boom Pivot
8. Stick Cylinder
9. Main Boom
10. Main Boom Cylinder
11. Windshield Guards
12. Window Guards
13. Cab
14. Main Boom Pivot
15. Machine Frame Pivot
16. Upper Structure
17. Axis of Rotation

SAE Technical Standards Board Rules provide that: "This report is published by SAE to advance the state of technical and engineering sciences. The use of this report is entirely voluntary, and its applicability and suitability for any particular use, including any patent infringement arising therefrom, is the sole responsibility of the user."

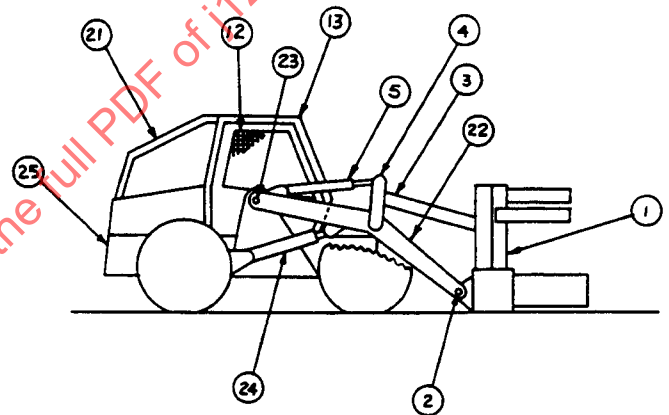
SAE reviews each technical report at least every five years at which time it may be reaffirmed, revised, or cancelled. SAE invites your written comments and suggestions.

SAE J1254 Reaffirmed JAN85

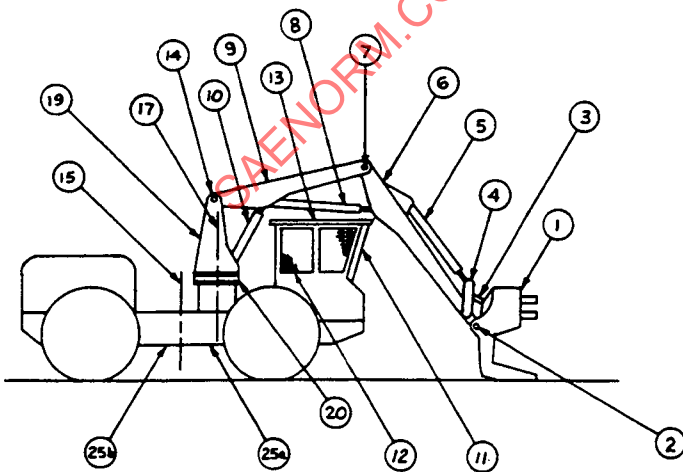
18. Undercarriage
19. Boom Mast
20. Swing Bearing
21. Brush Deflector
22. Lift Arm
23. Lift Arm Pivot Pin
24. Lift Arm Cylinder
25. Machine Frame
 - (a) Front Frame
 - (b) Rear Frame
26. Crawler Tractor—See SAE J1057a
27. Bellcrank
28. Guide Link



SWING-TO-BUNCH



TRAVEL-TO-BUNCH



PREPARED BY THE SAE OFF-ROAD MACHINERY TECHNICAL COMMITTEE