

SAE Technical Standards Board Rules provide that: "This report is published by SAE to advance the state of technical and engineering sciences. The use of this report is entirely voluntary, and its applicability and suitability for any particular use, including any patent infringement arising therefrom, is the sole responsibility of the user."

SAE reviews each technical report at least every five years at which time it may be reaffirmed, revised, or cancelled. SAE invites your written comments and suggestions.

REV.  
A

AS5176

FEDERAL SUPPLY CLASS  
4730

OPTIONAL LOCATION OF  
IDENTIFICATION /5/

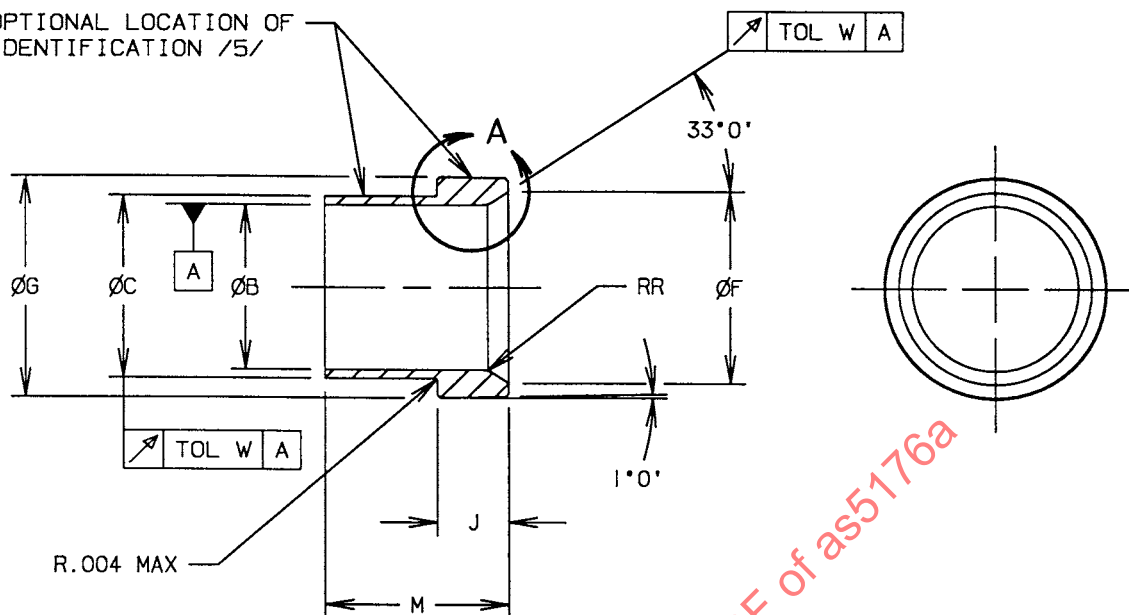
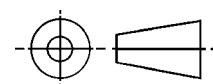


FIGURE 1 - FITTING, SLEEVE

THIRD ANGLE PROJECTION



CUSTODIAN: SAE G-3/G-3B

PROCUREMENT SPECIFICATION: AS4841 /4/

**SAE** The Engineering Society  
For Advancing Mobility  
Land Sea Air and Space®  
INTERNATIONAL  
400 Commonwealth Drive, Warrendale, PA 15096-0001

# AEROSPACE STANDARD

(R)

FITTING, SLEEVE, FLARED

**AS5176**  
SHEET 1 OF 3

**REV.  
A**

ISSUED 1999-01 REVISED 2001-12

REV.  
A

AS5176

TABLE 1A - DIMENSIONS

BASIC NO. AS5176 /14/ SIZE CODE	(NOMINAL TUBE SIZE)	B +.003/- .000	C +.000/- .003	F ±.005	G +.000/- .003	J
02	.125	.130	.172	.205	.267	.125
03	.188	.193	.234	.267	.329	.141
04	.250	.255	.297	.315	.383	.141
05	.312	.318	.366	.375	.445	.156
06	.375	.380	.432	.441	.502	.172
08	.500	.505	.562	.589	.682	.219
10	.625	.631	.690	.705	.797	.234
12	.750	.756	.826	.880	.972	.266
16	1.000	1.006	1.081	1.130	1.222	.281
20	1.250	1.260	1.339	1.412	1.534	.312
24	1.500	1.510	1.609	1.630	1.784	.344
28	1.750	1.762	1.882	1.945	2.159	.375
32	2.000	2.014	2.159	2.195	2.409	.406
40	2.500	2.516	2.659	2.695	2.911	.469
48	3.000	3.016	3.172	3.195	3.411	.531

TABLE 1B - DIMENSIONS AND WEIGHTS

BASIC NO. AS5176 /14/ SIZE CODE	M	R	W	LB/EA APPRO X REF CU	LB/EA APPRO X REF STEEL
02	.344	-	.005	.00220	.00207
03	.406	-	.005	.00338	.00320
04	.406	-	.005	.00673	.00635
05	.438	-	.005	.00555	.00525
06	.500	-	.005	.00733	.00692
08	.562	.062	.005	.0155	.0147
10	.656	.062	.005	.0205	.0194
12	.688	.078	.005	.0338	.0319
16	.781	.094	.010	.0496	.0469
20	.906	.094	.010	.0842	.0796
24	1.125	.109	.010	.129	.122
28	1.125	.109	.010	.214	.203
32	1.188	.109	.010	.279	.264
40	1.312	.109	.010	.384	.363
48	1.375	.109	.010	.509	.481