

RATIONALE

DELETED THICKNESS AND BREAKING STRENGTH DESIGNATION FOR AMS3666 SEAL MATERIAL.

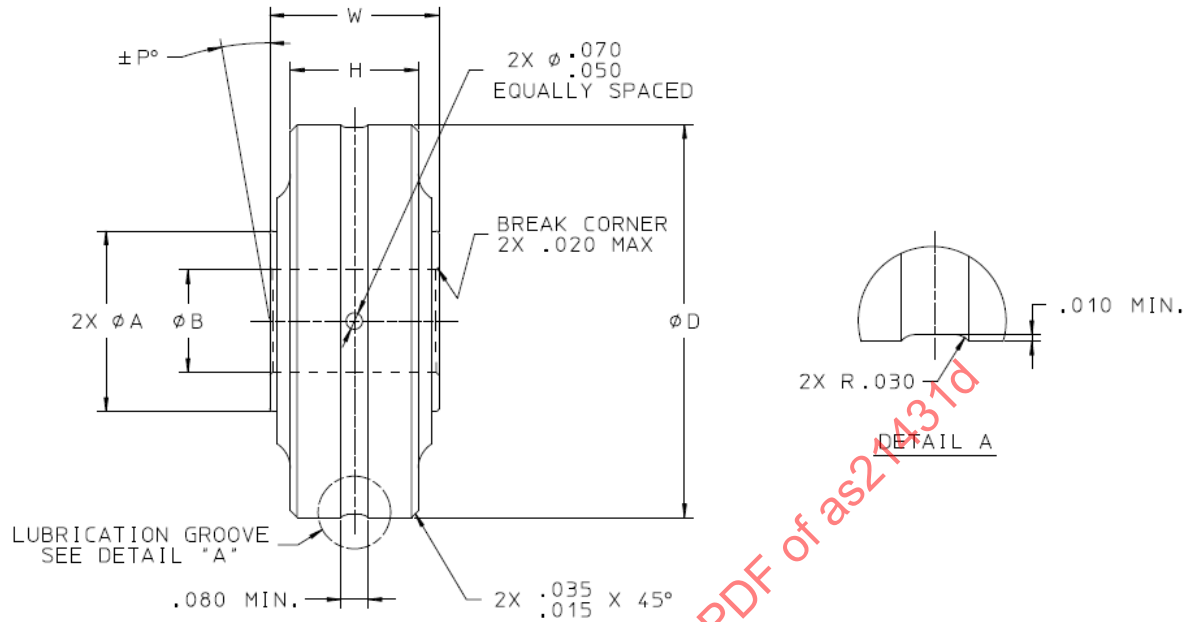


FIGURE 1

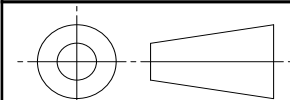
TABLE 1

DASH NO.	φB + .0000 - .0005	φD + .0000 - .0005	W + .000 - .005	H + .000 - .005	φ A + .005 - .005	P° MIN	WT (APPROX) LB	LIMIT LOAD - LB		RADIAL DYNAMIC LOAD LB
								RADIAL	THRUST	
-3	.1900	1.0000	.500	.344	.420	10°	.07	2720	270	2260
-4	.2500	1.0000	.500	.344	.420	10°	.06	2720	270	2260
-5	.3125	1.2500	.588	.375	.550	10°	.12	4210	420	3490
-6	.3750	1.4375	.620	.469	.660	10°	.17	6160	610	5120
-7	.4375	1.5000	.812	.625	.660	10°	.30	7900	790	6550
-8	.5000	1.6250	.750	.687	.810	2.5°	.37	11900	1190	9940

BEARING ROUNDNESS LIMITS									
BASIC (NOMINAL) DIAMETER		BORE ACCEPTANCE LIMITS				OD ACCEPTANCE LIMITS			
		MEAN DIAMETER				MEAN DIAMETER			
OVER	INCL	d MIN	LOW	HIGH	d MAX	D MIN	LOW	HIGH	D MAX
-	2.0000	-.0005	-.0005	+.0000	+.0001	-.0008	-.0005	+.0000	+.0003

For more information on this standard, visit
<https://www.sae.org/standards/content/AS21431D/>

THIRD ANGLE PROJECTION



CUSTODIAN: ACBG

PROCUREMENT SPECIFICATION: AS8914



AEROSPACE STANDARD

BEARING, ROLLER, SELF-ALIGNING.
SINGLE ROW, ANTI-FRICTION,
SEALED, -65 TO 350 °F, TYPE I

AS21431™
SHEET 1 OF 2

REV.
D