

PROPELLER SHAFT END, FLANGED TYPE - #1, 2, 3 & 4

Issued 7-1-43
Revised 10-1-49

Page 1 of 3

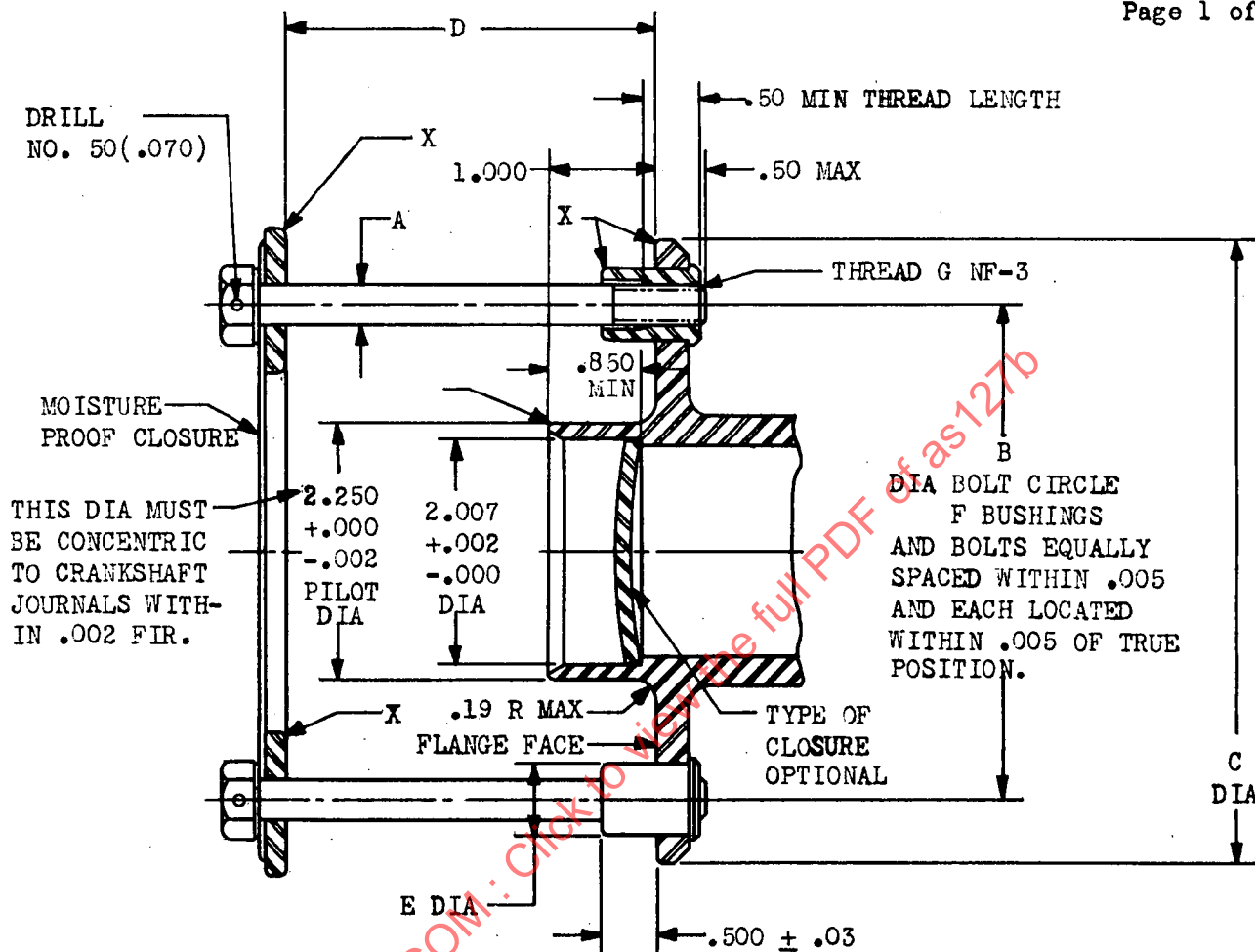


FIG 1

THE SQUARENESS OF THE FLANGE FACE WITH THE PROPELLER PILOT DIAMETER MUST BE HELD WITHIN .003 FIR.

ALL EDGES MARKED X ARE TO BE ROUNDED .03 TO .06. BREAK ALL OTHER SHARP EDGES .005 TO .015 AND REMOVE BURRS.

A SHRINK FIT OF .0005 - .0020 IS RECOMMENDED FOR THE THREADED BUSHINGS IN THE CRANKSHAFT FLANGE.

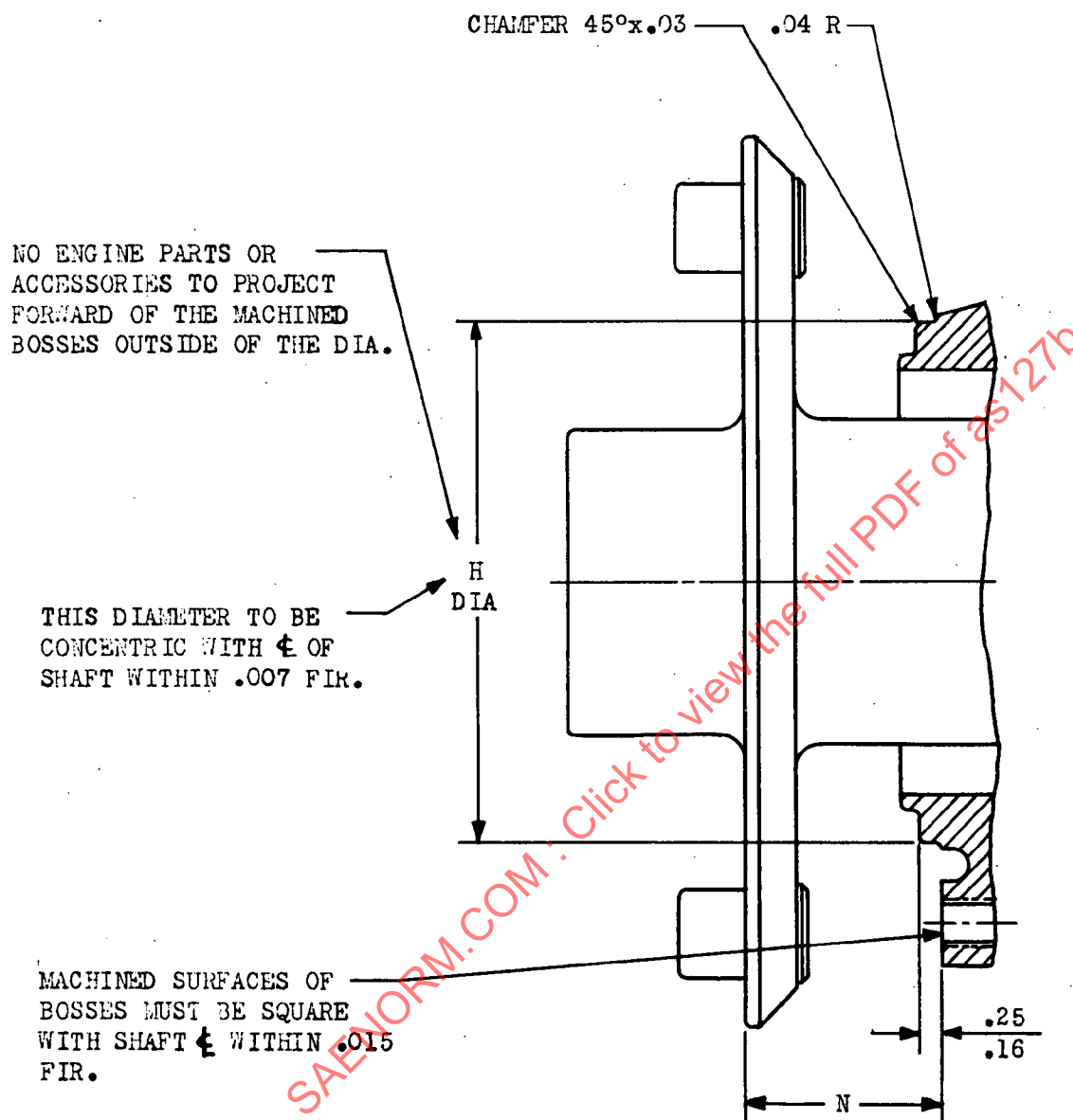
*NUMBER 2 FLANGE INACTIVE FOR NEW DESIGN.

SAE NUMBER	DIMENSION					NO. OF BOLTS F	BOLT THREAD G
	A +.000 -.005	B BASIC	C	D	E +.000 -.002		
1	.375	4.375	5.50	3.38	.624	6	.375-24
*2	.375	4.75	6.00	3.50	.624	6	.375-24
3	.375	5.25	6.50	4.00	.624	8	.375-24
4	.438	6.00	7.00	5.00	.688	8	.4375-20

SEE FIG 2 AND 3 FOR OTHER APPLICABLE DIMENSIONS.

PHYSICAL PROPERTIES, FINISHES AND FITS SHOULD MEET THE REQUIREMENTS FOR RECOMMENDED TORQUE RATINGS OF ARP 373.

UNLESS OTHERWISE SPECIFIED ALLOWABLE TOLERANCE ON:
LINEAR DIMENSION $\pm .01$, ANGULAR DIMENSION $\pm 2^\circ$



LETTER	TOLER	NO. 1	NO. 3	NO. 4
H	$\pm .001$	3.813	3.998	4.998
N	$\pm .025$	1.312	1.718	1.906

FIG 2

SHAFT SEAL SPECIFICATIONS: ENGINE MFR TO PROVIDE SEAL BETWEEN SHAFT AND ENGINE NOSE TO PREVENT OBJECTIONABLE OIL LEAKAGE FROM WITHIN THE ENGINE.

SEE FIG 1 AND 3 FOR OTHER APPLICABLE DIMENSIONS.

UNLESS OTHERWISE SPECIFIED ALLOWABLE TOLERANCE ON:
LINEAR DIMENSION $\pm .01$, ANGULAR DIMENSION $\pm 2^\circ$