

NFPA 45

Standard on Fire Protection for Laboratories Using Chemicals

1996 Edition



National Fire Protection Association, 1 Batterymarch Park, PO Box 9101, Quincy, MA 02269-9101
An International Codes and Standards Organization

Copyright ©
National Fire Protection Association, Inc.
One Batterymarch Park
Quincy, Massachusetts 02269

IMPORTANT NOTICE ABOUT THIS DOCUMENT

NFPA codes, standards, recommended practices, and guides, of which the document contained herein is one, are developed through a consensus standards development process approved by the American National Standards Institute. This process brings together volunteers representing varied viewpoints and interests to achieve consensus on fire and other safety issues. While the NFPA administers the process and establishes rules to promote fairness in the development of consensus, it does not independently test, evaluate, or verify the accuracy of any information or the soundness of any judgments contained in its codes and standards.

The NFPA disclaims liability for any personal injury, property or other damages of any nature whatsoever, whether special, indirect, consequential or compensatory, directly or indirectly resulting from the publication, use of, or reliance on this document. The NFPA also makes no guaranty or warranty as to the accuracy or completeness of any information published herein.

In issuing and making this document available, the NFPA is not undertaking to render professional or other services for or on behalf of any person or entity. Nor is the NFPA undertaking to perform any duty owed by any person or entity to someone else. Anyone using this document should rely on his or her own independent judgment or, as appropriate, seek the advice of a competent professional in determining the exercise of reasonable care in any given circumstances.

The NFPA has no power, nor does it undertake, to police or enforce compliance with the contents of this document. Nor does the NFPA list, certify, test or inspect products, designs, or installations for compliance with this document. Any certification or other statement of compliance with the requirements of this document shall not be attributable to the NFPA and is solely the responsibility of the certifier or maker of the statement.

NOTICES

All questions or other communications relating to this document and all requests for information on NFPA procedures governing its codes and standards development process, including information on the procedures for requesting Formal Interpretations, for proposing Tentative Interim Amendments, and for proposing revisions to NFPA documents during regular revision cycles, should be sent to NFPA headquarters, addressed to the attention of the Secretary, Standards Council, National Fire Protection Association, 1 Batterymarch Park, P.O. Box 9101, Quincy, MA 02269-9101.

Users of this document should be aware that this document may be amended from time to time through the issuance of Tentative Interim Amendments, and that an official NFPA document at any point in time consists of the current edition of the document together with any Tentative Interim Amendments then in effect. In order to determine whether this document is the current edition and whether it has been amended through the issuance of Tentative Interim Amendments, consult appropriate NFPA publications such as the *National Fire Codes*® Subscription Service, visit the NFPA website at www.nfpa.org, or contact the NFPA at the address listed above.

A statement, written or oral, that is not processed in accordance with Section 5 of the Regulations Governing Committee Projects shall not be considered the official position of NFPA or any of its Committees and shall not be considered to be, nor be relied upon as, a Formal Interpretation.

The NFPA does not take any position with respect to the validity of any patent rights asserted in connection with any items which are mentioned in or are the subject of this document, and the NFPA disclaims liability for the infringement of any patent resulting from the use of or reliance on this document. Users of this document are expressly advised that determination of the validity of any such patent rights, and the risk of infringement of such rights, is entirely their own responsibility.

Users of this document should consult applicable federal, state, and local laws and regulations. NFPA does not, by the publication of this document, intend to urge action that is not in compliance with applicable laws, and this document may not be construed as doing so.

Licensing Policy

This document is copyrighted by the National Fire Protection Association (NFPA). By making this document available for use and adoption by public authorities and others, the NFPA does not waive any rights in copyright to this document.

1. Adoption by Reference—Public authorities and others are urged to reference this document in laws, ordinances, regulations, administrative orders, or similar instruments. Any deletions, additions, and changes desired by the adopting authority must be noted separately. Those using this method are requested to notify the NFPA (Attention: Secretary, Standards Council) in writing of such use. The term "adoption by reference" means the citing of title and publishing information only.

2. Adoption by Transcription—**A.** Public authorities with lawmaking or rule-making powers only, upon written notice to the NFPA (Attention: Secretary, Standards Council), will be granted a royalty-free license to print and republish this document in whole or in part, with changes and additions, if any, noted separately, in laws, ordinances, regulations, administrative orders, or similar instruments having the force of law, provided that: (1) due notice of NFPA's copyright is contained in each law and in each copy thereof; and (2) that such printing and republication is limited to numbers sufficient to satisfy the jurisdiction's lawmaking or rule-making process. **B.** Once this NFPA Code or Standard has been adopted into law, all printings of this document by public authorities with lawmaking or rule-making powers or any other persons desiring to reproduce this document or its contents as adopted by the jurisdiction in whole or in part, in any form, upon written request to NFPA (Attention: Secretary, Standards Council), will be granted a nonexclusive license to print, republish, and vend this document in whole or in part, with changes and additions, if any, noted separately, provided that due notice of NFPA's copyright is contained in each copy. Such license shall be granted only upon agreement to pay NFPA a royalty. This royalty is required to provide funds for the research and development necessary to continue the work of NFPA and its volunteers in continually updating and revising NFPA standards. Under certain circumstances, public authorities with lawmaking or rule-making powers may apply for and may receive a special royalty where the public interest will be served thereby.

3. Scope of License Grant—The terms and conditions set forth above do not extend to the index of this document.

(For further explanation, see the Policy Concerning the Adoption, Printing, and Publication of NFPA Documents, which is available upon request from the NFPA.)

Copyright © 1996 NFPA, All Rights Reserved

NFPA 45

Standard on

Fire Protection for Laboratories Using Chemicals

1996 Edition

This edition of NFPA 45, *Standard on Fire Protection for Laboratories Using Chemicals*, was prepared by the Technical Committee on Chemistry Laboratories and acted on by the National Fire Protection Association, Inc., at its Annual Meeting held May 20–23, 1996, in Boston, MA. It was issued by the Standards Council on July 18, 1996, with an effective date of August 9, 1996, and supersedes all previous editions.

Changes other than editorial are indicated by a vertical rule in the margin of the pages on which they appear. These lines are included as an aid to the user in identifying changes from the previous edition.

This edition of NFPA 45 was approved as an American National Standard on July 26, 1996.

Origin and Development of NFPA 45

NFPA 45 was developed by the Technical Committee on Chemistry Laboratories. It was tentatively adopted at the 1974 NFPA Annual Meeting. Based on comments received, the tentative document was further amended, and the amended text was officially adopted at the 1975 NFPA Fall Meeting.

The committee wishes to acknowledge that NFPA 45 is due in large part to the leadership and efforts of the late Russell H. Scott, who served as chairman of the committee during the planning and drafting stages of the first edition of NFPA 45.

After the document had been in use for two years, the Technical Committee began an exhaustive review of the text. Some of the major changes made during this review included more extensive requirements for laboratory ventilation systems and more extensive explanatory appendixes, including one on explosion hazards and protection and one on the concept of the laboratory unit. These amendments were adopted at the 1981 NFPA Fall Meeting. Revisions to this 1982 edition were adopted at the 1986 NFPA Annual Meeting.

For the 1991 edition of NFPA 45, the committee made a variety of technical and editorial changes to the 1986 edition, including revisions to the automatic fire extinguishing systems section, along with minor revisions to the fire loss prevention procedures section and the laboratory ventilation systems requirements.

The 1996 edition of NFPA 45 represents partial amendments to the document and includes editorial revisions to improve usability, and adoptability of the document with respect to conforming with the NFPA *Manual of Style*. For the 1996 edition, several definitions were added to clarify the scope and application of the standard as it applies to various types of educational, industrial, and medical laboratory facilities.

In Chapter 2, the requirements for maximum quantities of flammable and combustible liquids in laboratory units were separated into two tables: one for sprinklered laboratory units and the other for non-sprinklered laboratory units. In addition, the committee revised the fire hazard classifications to recognize that clinical laboratories are using this standard as directed by NFPA 99, *Standard for Health Care Facilities*, and to identify that NFPA 101®, *Life Safety Code*®, no longer addresses laboratory occupancies. The committee clarified the requirements addressing instructional laboratory units.

In Chapter 3, the requirements for construction and fire protection for laboratory units were separated into two tables: one for sprinklered laboratory units and the other for nonsprinklered laboratory units. In addition, various requirements addressing life safety considerations were added to the chapter. The committee also clarified the application of classification of electrical equipment used in laboratories.

Revisions to Chapter 4 include clarification of the automatic sprinkler requirements, portable extinguisher requirements, and emergency plans. Chapter 6 addressing laboratory ventilation system requirements was revised to clarify the requirements for manifolded laboratory exhaust systems. The requirements in Chapter 8 addressing compressed and liquefied gases used in the laboratory unit were revised. Other editorial changes were made to the document to bring it into conformance with the NFPA *Manual of Style*.

Technical Committee on Chemistry Laboratories

John M. Fresina, *Chair*
Massachusetts Inst. of Technology, MA
Rep. Campus Safety Assn.

Murray A. Cappers, Jr., *Vice Chair*

Allied Signal Inc., NJ
Rep. Chemical Mfrs. Assn.

Raymond E. Arntson, University of Minnesota, MN
William H. Barlen, Cryodyne Technologies – Airgas, CT
Anne C. Belanger, Joint Commission on Accreditation of
Healthcare Organizations, IL
Donald J. Bowen, Madison Fire Dept., WI
Hal Cohen, Science Applications Int'l Corp., DE
Thomas P. Conlon, M&M Protection Consultants, NJ
William A. Cooper, Jr., Rolf Jensen & Assoc., Inc., GA
Gregory F. DeLuga, Landis & Gyr Powers, Inc., IL
Ulrich M. Lindner, Earl Walls Assoc., CA
John P. McCabe, Nat'l Inst. of Health/Fire Prevention Section,
MD

Andrew G. Minister, Battelle Northwest Lab, WA
Robert Myers, Amoco, GA
Rudolph Poblete, Kewaunee Scientific Corp., NC
V. J. Siminski, Exxon Research & Engr, NJ
Norman V. Steere, Norman V. Steere Assoc., Inc., MN
Stephen A. Szabo, Conoco R&D, OK
Laslo Varadi, AT&T Bell Laboratories, NJ
Patricia Weggel-Laane, U.S. Environmental Protection Agen-
cy, DC
Pamela A. Weiss, U.S. Army Center for Health Promotion &
Preventive Medicine, MD

Alternates

Antal Borsa, Earl Walls Assoc., CA
(Alt. to U. M. Lindner)
Michael Glowatz, AT&T Bell Laboratories, NJ
(Alt. to L. Varadi)

Edward S. Krupinski, Marsh & McLennan, Inc., AZ
(Alt. to T. P. Conlon)
Ray Richards, University of Alberta, Edmonton, Canada
(Alt. to J. M. Fresina)

Nonvoting

Robert F. Hughes, San Diego, CA
(Member Emeritus)

Martha H. Curtis, NFPA Staff Liaison

This list represents the membership at the time the Committee was balloted on the text of this edition. Since that time, changes in the membership may have occurred.

NOTE: Membership on a committee shall not in and of itself constitute an endorsement of the Association or any document developed by the committee on which the member serves.

Committee Scope: This Committee shall have primary responsibility for documents consistent with NFPA standards, for the prevention of loss of life and damage to property from fire and explosion in chemical laboratories.

Contents

Chapter 1 General	45- 4	6-9 Laboratory Hood Location	45-14
1-1 Scope	45- 4	6-10 Laboratory Hood Fire Protection	45-14
1-2 Purpose	45- 4	6-11 Perchloric Acid Hoods	45-14
1-3 Interface with Existing Codes and Standards	45- 4	6-12 Identification of Laboratory Hood Systems	45-15
1-4 Definitions	45- 4	6-13 Inspection, Testing, and Maintenance	45-15
Chapter 2 Laboratory Unit Hazard Classification	45- 6	Chapter 7 Chemical Storage, Handling, and Waste Disposal	45-15
2-1 Scope	45- 6	7-1 Ordering Procedures	45-15
2-2 Laboratory Unit Fire Hazard Classification	45- 6	7-2 Handling and Storage	45-15
2-3 Laboratory Work Area and Laboratory Unit Explosion Hazard Classification	45- 8	Chapter 8 Compressed and Liquefied Gases	45-16
Chapter 3 Laboratory Unit Design and Construction	45- 8	8-1 Compressed and Liquefied Gases in Cylinders	45-16
3-1 Laboratory Unit Enclosure	45- 8	8-2 Storage and Piping Systems	45-17
3-2 Maximum Area of Laboratory Units	45-10	8-3 Outdoor Installation of Compressed Gas Cylinders for Servicing Laboratory Work Areas (Located Outside of Laboratory Work Areas)	45-18
3-3 Requirements for Life Safety	45-10	8-4 Cryogenic Fluids	45-18
3-4 Means of Access to an Exit	45-10	Chapter 9 Laboratory Operations and Apparatus	45-18
3-5 Furniture, Casework, and Equipment	45-10	9-1 Operations	45-18
3-6 Electrical Installation	45-10	9-2 Apparatus	45-19
Chapter 4 Fire Protection	45-10	Chapter 10 Hazard Identification	45-20
4-1 General	45-10	10-1 Identification of Entrances	45-20
4-2 Automatic Fire Extinguishing Systems	45-11	10-2 Exhaust Systems	45-20
4-3 Standpipe and Hose Systems	45-11	10-3 Labeling of Containers	45-20
4-4 Portable Fire Extinguishers	45-11	Chapter 11 Referenced Publications	45-20
4-5 Fire Alarm Systems	45-11	Appendix A Explanatory Material	45-21
4-6 Fire Prevention	45-11	Appendix B Supplementary Definitions	45-30
Chapter 5 Explosion Hazard Protection	45-11	Appendix C Supplementary Information on Explosion Hazards and Protection	45-34
5-1 General	45-11	Appendix D Supplementary Information on the Concept of the Laboratory Unit	45-38
5-2 Explosion-Resistant Construction	45-12	Appendix E Flammability Characteristics of Common Compressed and Liquefied Gases	45-41
5-3 Explosion Venting	45-12	Appendix F Referenced Publications	45-42
5-4 Unauthorized Access	45-12	Index	45-44
5-5 Inspection and Maintenance	45-12		
Chapter 6 Laboratory Ventilating Systems and Hood Requirements	45-12		
6-1 Scope	45-12		
6-2 Basic Requirements	45-12		
6-3 Supply Systems	45-12		
6-4 Exhaust Air Discharge	45-12		
6-5 Duct Construction for Hoods and Local Exhaust Systems	45-13		
6-6 Duct Velocities	45-13		
6-7 Exhausters (Fans), Controls, Velocities, and Discharge	45-13		
6-8 Laboratory Hood Construction	45-14		

NFPA 45

Standard on

Fire Protection for
Laboratories Using Chemicals

1996 Edition

NOTICE: An asterisk (*) following the number or letter designating a paragraph indicates that explanatory material on the paragraph can be found in Appendix A.

The appearance of a dagger (†) before a paragraph indicates text extracted from other NFPA documents.

Information on referenced publications can be found in Chapter 11 and Appendix F.

Chapter 1 General

1-1 Scope.

1-1.1 This standard shall apply to laboratory buildings, laboratory units, and laboratory work areas whether located above or below grade in which chemicals, as defined, are handled or stored in quantities greater than the minimums specified in this standard.

Exception No. 1: This standard shall not apply to laboratory units with less than or equal to 4 L (1.1 gal) of flammable or combustible liquid, and less than 2.2 standard m³ (75 standard ft³) of flammable gas.

Exception No. 2: It does not apply to laboratories that are pilot plants.

Exception No. 3: It does not apply to laboratories that are primarily manufacturing plants.

Exception No. 4: It does not apply to incidental testing facilities.

Exception No. 5: It does not apply to physical, electronic, instrument, laser, or similar laboratories that use chemicals only for incidental purposes, such as cleaning.

Exception No. 6: It does not apply to laboratories that work only with radioactive materials.

NOTE: For information on working with radioactive materials, see NFPA 801, *Standard for Facilities Handling Radioactive Materials*.

Exception No. 7: It does not apply to laboratories that work only with explosive material, covered by NFPA 495, Explosive Materials Code.

1-1.2 This standard contains requirements, but not all-inclusive requirements, for handling and storage of chemicals, where laboratory-scale operations are conducted.

Exception No. 1: It does not cover the special fire protection required when handling explosive materials. (See NFPA 495, Explosive Materials Code.)

Exception No. 2: It does not cover the special fire protection required when handling radioactive materials.

1-1.3* Applicability. The provisions of this document are considered necessary to provide a reasonable level of protection from loss of life and property from fire and explosion.

They reflect situations and the state of the art prevalent at the time the standard was issued.

Unless otherwise noted, it is not intended that the provisions of this document be applied to facilities, equipment, structures, or installations that were existing or approved for construction or installation prior to the effective date of the document, except in those cases where it is determined by the authority having jurisdiction that the existing situation involves a distinct hazard to life or property.

1-1.4 Equivalency. Nothing in this standard is intended to prevent the use of systems, methods, or devices of equivalent or superior quality, strength, fire resistance, effectiveness, durability, and safety over those prescribed by this standard, provided technical documentation is made available to the authority having jurisdiction to demonstrate equivalency and the system, method, or device is approved for the intended purpose.

1-2 Purpose.

1-2.1 The purpose of this standard is to provide basic requirements for the protection of life and property through prevention and control of fires and explosions involving the use of chemicals in laboratory-scale operations.

1-2.2 This standard is designed to control hazards and protect personnel from the toxic, corrosive, or other harmful effects of chemicals they might be exposed to as a result of fire or explosion.

1-2.3 The objective of this standard is to achieve a comprehensive laboratory fire prevention and protection program.

1-3 Interface with Existing Codes and Standards.

1-3.1 When interface with existing NFPA or other consensus codes and standards occurs, reference is made to the appropriate source in the text.

1-3.2* NFPA 99, *Standard for Health Care Facilities*, shall be used for additional requirements for laboratories in health care occupancies.

1-3.3 Due to the special nature of laboratories using chemicals, this standard modifies and supplements existing codes and standards so as to apply more specifically to buildings or portions of buildings devoted to laboratory-scale operations.

1-3.4 Where a construction or protection requirement of a governmental agency having jurisdiction is more stringent than in this standard, the more stringent requirement shall apply.

1-4 Definitions. For the purpose of this standard, the following terms shall have the meanings given below.

Apparatus. Furniture, laboratory hoods, centrifuges, refrigerators, and commercial or made-on-site equipment used in a laboratory.

Approved.* Acceptable to the authority having jurisdiction

Authority Having Jurisdiction.* The organization, office, or individual responsible for approving equipment, an installation, or a procedure.

Auxiliary Air. Supply or supplemental air delivered near the outside face of a laboratory hood to reduce room air consumption.

Baffle. A panel or panels located at the rear of the hood interior that aid in distributing the flow pattern of air moving into and through the hood.

Biological Safety Cabinet. A special safety enclosure used to handle and contain biological materials.

Business Occupancy. An occupancy used for the transaction of business (other than those covered under “mercantile”) for the keeping of accounts and records and for similar purposes.

Bypass. An airflow-compensating opening that maintains a relatively constant volume exhaust through a laboratory hood regardless of sash position. It serves to limit the maximum face velocity as the sash is lowered.

Canopy Hood. A suspended ventilating device used only to exhaust heat, water vapor, odors, and other nonhazardous materials. This is *not* a laboratory hood and generally is *not* effective for exhausting toxic or flammable materials.

Chemical.* A substance with one or more of the following hazard ratings as defined in NFPA 704, *Standard System for the Identification of the Hazards of Materials for Emergency Response*: Health — 2, 3, or 4; Flammability — 2, 3, or 4; Reactivity — 2, 3, or 4. (See also Section B-2.)

Combustible Liquid. See definition of Liquid; see also Section B-1.

Compressed Gas Cylinder. Any portable pressure vessel of 45.4 kg (100 lb) water capacity or less designed to contain a gas or liquid that is authorized for use at pressures over 276 kPa (40 psig) at 21°C (70°F) by the U.S. Department of Transportation (DOT) or Transport Canada (T.C.).

Cryogenic Fluid.* Substance that exists only in the vapor phase above -73°C (-99°F) at one atmosphere pressure and that is handled, stored, and used in the liquid state at temperatures at or below -73°C (-99°F) while at any pressure.

Deflector Vane. An airfoil-shaped vane along the bottom of the hood face that directs incoming air across the work surface to the lower baffle opening. The opening between the work surface and the deflector vane is open even with the sash fully closed.

Educational Laboratory Unit. A laboratory unit that is used for educational purposes through the 12th grade by six or more persons for 4 or more hours per day or more than 12 hours per week.

Educational Occupancy.* All buildings or portions of buildings used for educational purposes through the 12th grade by six or more persons for 4 or more hours per day or more than 12 hours per week. Educational occupancies include: academies, kindergartens, nursery schools, and schools. Educational occupancies also include day-care facilities of any occupant load. Other occupancies associated with educational institutions shall be in accordance with the appropriate parts of the NFPA 101, *Life Safety Code*. In cases where instruction is incidental to some other occupancy, the section of NFPA 101, *Life Safety Code*, governing such other occupancy shall apply.

Explosive Material.* A chemical compound, mixture, or device, the primary or common purpose of which is to function by explosion.

Face (of hood). The hood opening or the plane of the inside surface of the sash. This area is used to calculate the square footage of hood opening, and face velocity is measured in this plane.

Face Velocity. The rate of flow or velocity of air moving into the laboratory hood entrance or face, as measured at the plane of the laboratory hood face.

Fire Separation. A horizontal or vertical fire-resistance-rated assembly of materials having protected openings and designed to restrict the spread of fire.

Flammable Gas. A gas that will burn in air.

Flammable Liquid. See definition of Liquid; see also Section B-1.

Flash Point.* The minimum temperature at which a liquid gives off vapor in sufficient concentration to form an ignitable mixture with air near the surface of the liquid within the vessel, as specified by appropriate test procedures and apparatus.

Health Care Facilities. Buildings or portions of buildings in which medical, dental, psychiatric, nursing, obstetrical, or surgical care are provided. Health care facilities include, but are not limited to, hospitals, nursing homes, limited care facilities, clinics, medical and dental offices, and ambulatory care centers, whether permanent or movable.

Health Care Occupancy. An occupancy that is used for purposes such as medical or other treatment or care of persons suffering from physical or mental illness, disease, or infirmity; and for the care of infants, convalescents, or infirm aged persons. Health care occupancies provide sleeping facilities for four or more occupants and are occupied by persons who are mostly incapable of self-preservation because of age, physical or mental disability, or because of security measures not under the occupant's control.

Hood Interior. The volume enclosed by the side, back, and top enclosure panels, the work surface, the access opening (called the face), the sash or sashes, and the exhaust plenum, including the baffle system for airflow distribution.

Incidental Testing Facility. An area within a production facility set aside for the purpose of conducting in-process control tests that are related to the production process.

Industrial Occupancy.* Factories making products of all kinds and properties devoted to operations such as processing, assembling, mixing, packaging, finishing or decorating, and repairing.

Inside Liquid Storage Area. A room or building used for the storage of liquids in containers or portable tanks, separated from other types of occupancies. Such areas include:

(a) *Inside Room.* A room totally enclosed within a building and having no exterior walls.

(b) *Cut-Off Room.* A room within a building and having at least one exterior wall.

(c) *Attached Building.* A building having only one common wall with another building having other types of occupancies.

(d) *Liquid Warehouse.* A separate, detached building or attached building used for warehousing-type operations for liquids.

Instructional Laboratory Unit. A laboratory unit used for the purposes of instruction of six or more persons for 4 or more hours per day or more than 12 hours per week. Experiments and tests conducted in instructional laboratory units are under the direct supervision of an instructor. Laboratory units used for graduate or post-graduate research are not to be considered instructional laboratory units.

Labeled. Equipment or materials to which has been attached a label, symbol, or other identifying mark of an organization that is acceptable to the authority having jurisdiction and concerned with product evaluation that maintains periodic inspection of production of labeled equipment or materials and by whose labeling the manufacturer indicates compliance with appropriate standards or performance in a specified manner.

Laboratory. A facility where the containers used for reactions, transfers, and other handling of chemicals are designed to be easily and safely manipulated by one person. It is a workplace where chemicals are used or synthesized on a nonproduction basis.

Laboratory Building. A structure consisting wholly or principally of one or more laboratory units.

Laboratory Equipment. See definition of Apparatus.

Laboratory Hood.* A ventilated enclosure designed to contain and exhaust fumes, gases, vapors, mists, and particulate matter generated within the hood interior.

Laboratory Scale. Work with chemicals in which the containers used for reactions, transfers, and other handling of chemicals are designed to be easily and safely manipulated by one person.

Laboratory Unit. An enclosed space used for experiments or tests. A laboratory unit can include offices, lavatories, and other incidental contiguous rooms maintained for or used by laboratory personnel, and corridors within the unit. It can contain one or more separate laboratory work areas. It can be an entire building. A laboratory unit is classified as A, B, C, or D according to the limitations established in Tables 2-2(a), 2-2(b), 3-1(a), and 3-1(b). (*See also Appendix D.*)

Laboratory Unit Separation. All walls, partitions, floors, and ceilings, including openings in them, that separate a laboratory unit from adjoining areas.

Laboratory Work Area. A room or space for testing, analysis, research, instruction, or similar activities that involve the use of chemicals. This work area can be enclosed.

Laminar Flow Cabinet. A ventilated, partially enclosed cabinet primarily intended to provide filtered airflow over the work surface by use of laminar airflow methods.

Liquefied Gas Cylinder. A compressed gas cylinder used for liquefied gas.

Liquid. Any material that has a fluidity greater than that of 300 penetration asphalt when tested in accordance with ASTM D 5, *Test for Penetration of Bituminous Materials*. When not otherwise identified, the term liquid shall mean both flammable and combustible liquids. (*See Section B-1.*)

Listed.* Equipment, materials, or services included in a list published by an organization acceptable to the authority having jurisdiction and concerned with evaluation of products or services that maintains periodic inspection of production of

listed equipment or materials or periodic evaluation of services and whose listing states either that the equipment, material, or service meets identified standards or has been tested and found suitable for a specified purpose.

Nonlaboratory Area. Any space within a building not included in a laboratory unit. (*See definition of Laboratory Unit.*)

Pilot Plant. An experimental assembly of manufacturing equipment for exploring process variables or for producing semicommercial quantities of materials.

Reactive Material. A material that, by itself, is readily capable of detonation, explosive decomposition, or explosive reaction at normal or elevated temperatures and pressures. (*See B-2.5.5 for definitions of Reactivity 2, 3, or 4.*)

Refrigerating Equipment. Any mechanically operated equipment used for storing materials below normal ambient temperature. It includes refrigerators, freezers, and similar equipment. (*See 9-2.2 and A-9-2.2.2.*)

Safety Can.* An approved container, of not more than 19 L (5 gal) capacity, having a spring-closing lid and spout cover and so designed that it will safely relieve internal pressure when subjected to fire exposure.

Sash. A movable panel or panels set in the hood entrance. (*See C-5.1.*)

Shall. Indicates a mandatory requirement.

Should. Indicates a recommendation or that which is advised but not required.

Storage Cabinet.* A cabinet for the storage of flammable and combustible liquids constructed in accordance with Section 4-3 of NFPA 30, *Flammable and Combustible Liquids Code*.

Street Floor.* Any story or floor level accessible from the street or from outside the building at ground level, with floor level at main entrance not more than three risers above or below ground level at these points, and so arranged and utilized as to qualify as the main floor.

Unattended Laboratory Operation.* A laboratory procedure or operation at which there is no person present who is knowledgeable regarding the operation and emergency shutdown procedures.

Chapter 2 Laboratory Unit Hazard Classification

2-1 Scope. This chapter classifies laboratory units based on the amount of flammable and combustible liquids or flammable gases contained within the unit, both in storage and in use. This chapter also defines the existence of an explosion hazard in a laboratory unit or in a laboratory work area. This chapter further defines limitations on instructional laboratory units.

2-2 Laboratory Unit Fire Hazard Classification.

2-2.1* Laboratory units shall be classified as Class A (High Fire Hazard), Class B (Moderate Fire Hazard), Class C (Low Fire Hazard), or Class D (Minimal Fire Hazard), according to the quantities of flammable and combustible liquids specified in Table 2-2(a) and Table 2-2(b). (*See Appendix D for further information on laboratory unit fire hazard classification.*)

Table 2-2(a) Maximum Quantities of Flammable and Combustible Liquids in Sprinklered Laboratory Units Outside of Flammable Liquid Inside Liquid Storage Areas

Laboratory Unit Fire Hazard Class	Flammable or Combustible Liquid Class	Excluding Quantities in Storage Cabinets ³ or Safety Cans		Including Quantities in Storage Cabinets ³ or Safety Cans	
		Maximum Quantity ² per 9.3 m ² (100 ft ²) of Laboratory Unit	Maximum Quantity ^{1,2} per Laboratory Unit	Maximum Quantity ² per 9.3 m ² (100 ft ²) of Laboratory Unit	Maximum Quantity ^{1,2} per Laboratory Unit
A	I ⁴ I ⁴ , II, and IIIA	38 L (10 gal) 76 L (20 gal)	2270 L (600 gal) 3028 L (800 gal)	76 L (20 gal) 150 L (40 gal)	4540 L (1200 gal) 6060 L (1600 gal)
B	I ⁴ I ⁴ , II, and IIIA	20 L (5 gal) 38 L (10 gal)	1136 L (300 gal) 1515 L (400 gal)	38 L (10 gal) 76 L (20 gal)	2270 L (600 gal) 3028 L (800 gal)
C	I ⁴ I ⁴ , II, and IIIA	7.5 L (2 gal) 15 L (4 gal)	570 L (150 gal) 757 L (200 gal)	15 L (4 gal) 30 L (8 gal)	1136 L (300 gal) 1515 L (400 gal)
D	I ⁴ I ⁴ , II, and IIIA	4 L (1.1 gal) 4 L (1.1 gal)	284 L (75 gal) 284 L (75 gal)	7.5 L (2 gal) 7.5 L (2 gal)	570 L (150 gal) 570 L (150 gal)

¹For maximum allowable quantity, see 2-2.4.²For maximum container sizes, see Table 7-2.³See description of containers in Table 4-2.3 and description of storage cabinets in Section 4-3 of NFPA 30, *Flammable and Combustible Liquids Code*.⁴This category includes Class I flammable liquids and liquefied flammable gases.

NOTE 1: For maximum quantities of Class I liquids, see 2-2.5.

NOTE 2: For nonwater extinguishing systems, see 2-2.6.

Table 2-2(b) Maximum Quantities of Flammable and Combustible Liquids in Nonsprinklered Laboratory Units Outside of Flammable Liquid Inside Liquid Storage Areas

Laboratory Unit Fire Hazard Class	Flammable or Combustible Liquid Class	Excluding Quantities in Storage Cabinets ³ or Safety Cans		Including Quantities in Storage Cabinets ³ or Safety Cans	
		Maximum Quantity ² per 9.3 m ² (100 ft ²) of Laboratory Unit	Maximum Quantity ^{1,2} per Laboratory Unit	Maximum Quantity ² per 9.3 m ² (100 ft ²) of Laboratory Unit	Maximum Quantity ^{1,2} per Laboratory Unit
A	I ⁴ I ⁴ , II, and IIIA	38 L (10 gal) 76 L (20 gal)	1136 L (300 gal) 1515 L (400 gal)	76 L (20 gal) 150 L (40 gal)	2270 L (600 gal) 3028 L (800 gal)
B	I ⁴ I ⁴ , II, and IIIA	20 L (5 gal) 38 L (10 gal)	570 L (150 gal) 757 L (200 gal)	38 L (10 gal) 76 L (20 gal)	1136 L (300 gal) 1515 L (400 gal)
C	I ⁴ I ⁴ , II, and IIIA	7.5 L (2 gal) 15 L (4 gal)	284 L (75 gal) 380 L (100 gal)	15 L (4 gal) 30 L (8 gal)	570 L (150 gal) 760 L (200 gal)
D	I ⁴ I ⁴ , II, and IIIA	4 L (1.1 gal) 4 L (1.1 gal)	140 L (37 gal) 140 L (37 gal)	7.5 L (2 gal) 7.5 L (2 gal)	284 L (75 gal) 284 L (75 gal)

¹For maximum allowable quantity, see 2-2.4.²For maximum container sizes, see Table 7-2.³See description of containers in Table 4-2.3 and description of storage cabinets in Section 4-3 of NFPA 30, *Flammable and Combustible Liquids Code*.⁴This category includes Class I flammable liquids and liquefied flammable gases.

NOTE 1: For maximum quantities of Class I liquids, see 2-2.5.

NOTE 2: For nonwater extinguishing systems, see 2-2.6.

2-2.1.1 High Fire Hazard. The total amount of flammable and combustible liquids outside of flammable liquid storage rooms shall not exceed the quantities presented for Class A laboratory units in Table 2-2(a) or 2-2(b).

2-2.1.2 Moderate Fire Hazard. The total amount of flammable and combustible liquids outside of flammable liquid storage rooms shall not exceed the quantities presented for Class B laboratory units in Table 2-2(a) or 2-2(b).

2-2.1.3 Low Fire Hazard. The total amount of flammable and combustible liquids outside of flammable liquid storage rooms shall not exceed the quantities presented for Class C laboratory units in Table 2-2(a) or 2-2(b).

2-2.1.4 Minimal Fire Hazard. The total amount of flammable and combustible liquids outside of flammable liquid storage rooms shall not exceed the quantities presented for Class D laboratory units in Table 2-2(a) or 2-2(b). (*See 1-1.1, Exception No. 1.*)

2-2.1.4.1 Quantities of flammable and combustible liquids including liquids in laboratory units located in health care occupancies shall not exceed those specified for a Class D laboratory unit.

2-2.1.5 For the purposes of determining laboratory fire hazard classification and the use of Tables 2-2(a) and 2-2(b), quantities of liquefied flammable gases shall be treated as if

they were Class I flammable liquids; that is, 4 L (1.1 gal) of liquefied flammable gas is to be considered equivalent to 4 L (1.1 gal) of Class I flammable liquid.

Exception: If a risk assessment acceptable to the authority having jurisdiction demonstrates that a material poses a fire loading different than indicated by the treatment of liquefied flammable gases, a more specific conversion shall be permitted to be used.

2-2.2 Instructional Laboratory Units.

2-2.2.1 Experiments and tests conducted in instructional laboratory units shall be under the direct supervision of an instructor.

2-2.2.2 Laboratory units used for instructional purposes shall be limited to 50 percent of the flammable and combustible liquids quantity for Class B laboratory units in Tables 2-2(a) and 2-2(b).

2-2.2.3 Laboratory units used for the instruction of students through the 12th grade shall be limited to 50 percent of the flammable and combustible liquids quantity for Class C laboratory units in Tables 2-2(a) and 2-2(b).

2-2.3 Maximum capacities of storage containers for flammable and combustible liquids located in laboratory units shall comply with 7-2.3.2 and Table 7-2.

2-2.4 Regardless of the maximum allowable quantity of flammable and combustible liquids per laboratory unit specified in Table 2-2(a) and Table 2-2(b), the maximum amount in a laboratory unit shall not exceed an amount calculated by using the specified maximum quantity per 9.3 m² (100 ft²) of laboratory unit. The area of offices, restrooms, and other contiguous areas of a laboratory unit shall be included when making this calculation.

2-2.5 The maximum quantities of Class I liquids when combined with Class II and Class IIIA liquids shall not exceed the maximum quantities specified in Table 2-2(a) or Table 2-2(b) for Class I liquids alone.

2-2.6 Table 2-2(a) pertains to laboratory units protected by automatic sprinkler systems in accordance with NFPA 13, *Standard for the Installation of Sprinkler Systems*. Where water will create a serious fire or personnel hazard, a suitable nonwater automatic extinguishing system is an acceptable substitute for sprinklers.

2-2.7 Requirements for laboratory units shall apply to all laboratory units unless identified as applying to a laboratory unit of a specific fire hazard class.

2-2.8 For design, construction, and fire protection requirements for laboratory units, see Chapters 3 and 4.

2-3 Laboratory Work Area and Laboratory Unit Explosion Hazard Classification.

2-3.1 A laboratory work area shall be considered to contain an explosion hazard if an explosion of quantities or concentrations of materials in (a) through (e) below could result in serious or fatal injuries to personnel within that laboratory work area. (See Appendix C.)

(a) Storage of materials with a Reactivity Hazard Rating of 4. (See B-2.5.)

(b) Use or formation of materials with a Reactivity Hazard Rating of 4. (See B-2.5.)

(c) *Highly exothermic reactions such as polymerizations, oxidations, nitrations, peroxidations, hydrogenations, or organo-metallic reactions.

(d) Use or formation of materials whose chemical structures indicate a potential hazard, but whose properties have not been established, such as triple bonds, epoxy radicals, nitro and nitroso compounds, and peroxides.

(e) High pressure reactions. (See Figure C-4.5.)

2-3.2 A laboratory unit shall not be considered to contain an explosion hazard unless a laboratory work area *within that unit* contains an explosion hazard great enough to cause major property damage or serious injury *outside that laboratory work area*.

2-3.3 For explosion hazard protection requirements, see Chapter 5.

Chapter 3 Laboratory Unit Design and Construction

3-1* Laboratory Unit Enclosure.

3-1.1 The required construction of laboratory units shall depend on the laboratory unit fire hazard classification, the area of the laboratory unit, and the protection to be provided.

3-1.2 The construction requirements shall be the minimum permitted and shall not exclude the use of construction with greater fire resistance.

3-1.3 Laboratory units shall be separated from nonlaboratory areas by construction equal to or greater than the fire resistance requirements specified in Table 3-1(a) and Table 3-1b.

3-1.4 Laboratory units shall be separated from other laboratory units of equal or lower hazard by construction equal to or greater than the fire resistance requirements specified in Table 3-1(a) and Table 3-1(b).

3-1.5 Laboratory units shall be separated from other laboratory units of a higher hazard class by construction equal to or greater than the fire resistance requirements specified in Table 3-1(a) and Table 3-1(b).

3-1.6 Regardless of the construction and fire protection requirements for laboratory units specified in Table 3-1(a) or Table 3-1(b), laboratory units in educational occupancies shall be separated from nonlaboratory areas by 1-hour construction.

3-1.7 Table 3-1(a) pertains to laboratory units protected by automatic sprinkler systems in accordance with NFPA 13, *Standard for the Installation of Sprinkler Systems*. Where water will create a serious fire or personnel hazard, a suitable nonwater automatic extinguishing system is an acceptable substitute for sprinklers.

3-1.8 Penetrations through fire-rated floor/ceiling and wall assemblies by pipes, conduits, bus ducts, cables, wires, air ducts, pneumatic tubes and ducts, and similar building service equipment shall be protected in accordance with NFPA 101, *Life Safety Code*.

3-1.9 All floor openings shall be sealed or curbed to prevent liquid leakage to lower floors.

Table 3-1(a) Construction and Fire Protection Requirements for Sprinklered Laboratory Units (See also A-3-1 and Section B-3.)

Sprinklered Laboratory Units			
Laboratory Unit Fire Hazard Class	Area of Laboratory Unit m ² (ft ²)	Any Construction Type	
		Fire Separation ¹ from Nonlaboratory Areas	Fire Separation ¹ from Laboratory Units of Equal or Lower Hazard Classification
A	<93 (<1000)	1 hr	NC; LC
	93.1–186 (1001–2000)	1 hr	NC; LC
	186.1–465 (2001–5000)	1 hr	NC; LC
	465.1–930 (5001–10,000)	1 hr	NC; LC
	>930.1 (>10,001)	not permitted	not permitted
B	<1860 (<20,000)	NC; LC	NC; LC
	>1860 (>20,000)	not permitted	not permitted
C	<930 (<10,000)	NC; LC	NC; LC
	>930 (>10,000)	NC; LC	NC; LC
D	<930 (<10,000)	NC; LC; 1/2 C	NC; LC; 1/2 C; EC
	>930 (>10,000)	NC; LC; 1/2 C	NC; LC; 1/2 C; EC

Construction Type Designations

NC = Noncombustible Construction

LC = Limited-Combustible Construction

1/2 C = 1/2-hr Combustible Construction

EC = Existing Combustible Construction

¹Fire separation = from one level of rated construction to another.

Table 3-1(b) Construction and Fire Protection Requirements for Nonsprinklered Laboratory Units (See also A-3-1 and Section B-3.)

Nonsprinklered Laboratory Units					
Laboratory Unit Fire Hazard Class	Area of Laboratory Unit m ² (ft ²)	Construction Types I and II		Construction Types III, IV, and V	
		Fire Separation ¹ from Nonlaboratory Areas	Fire Separation ¹ from Laboratory Units of Equal or Lower Hazard Classification	Fire Separation ¹ from Nonlaboratory Areas	Fire Separation ¹ from Laboratory Units of Equal or Lower Hazard Classification
A	<93 (<1000)	1 hr	1 hr	2 hr	1 hr
	93.1–186 (1001–2000)	1 hr	1 hr	not permitted	not permitted
	186.1–465 (2001–5000)	2 hr	1 hr	not permitted	not permitted
	465.1–930 (5001–10,000)	not permitted	not permitted	not permitted	not permitted
	>930.1 (>10,001)	not permitted	not permitted	not permitted	not permitted
B	<1860 (<20,000)	1 hr	NC; LC	1 hr	1 hr
	>1860 (>20,000)	not permitted	not permitted	not permitted	not permitted
C	<930 (<10,000)	1 hr	NC; LC	1 hr	NC; LC
	>930 (>10,000)	1 hr	NC; LC	1 hr	1 hr
D	<930 (<10,000)	1 hr	NC; LC	1 hr	NC; LC
	>930 (>10,000)	1 hr	NC; LC	1 hr	1 hr

Construction Type Designations

NC = Noncombustible Construction

LC = Limited-Combustible Construction

1/2 C = 1/2-hr Combustible Construction

¹Fire separation = from one level of rated construction to another.

3-1.10 Door assemblies in 1-hour-rated fire barriers shall be $\frac{3}{4}$ -hour rated. Door assemblies in 2-hour-rated fire barriers shall be 1 $\frac{1}{2}$ -hour rated.

3-1.11 Window assemblies shall be permitted in fire-rated wall assemblies having a required fire resistance rating of 1 hour or less. Window assemblies shall be of an approved type and have a fire protection rating in accordance with NFPA 101, *Life Safety Code*. Fire window assemblies shall be installed in accordance with NFPA 80, *Standard for Fire Doors and Fire Windows*.

3-1.12* Openings in fire-rated floor/ceiling and wall assemblies for air-handling ductwork or air movement shall be protected in accordance with NFPA 90A, *Standard for the Installation of Air Conditioning and Ventilating Systems*.

3-2 Maximum Area of Laboratory Units. The maximum area of a laboratory unit shall be determined by the fire hazard classification, the construction of the laboratory unit, and the fire protection provided, as shown in Tables 3-1(a) and 3-1(b).

3-3 Requirements for Life Safety. Life safety features for laboratory buildings, laboratory units, and laboratory work areas shall comply with NFPA 101, *Life Safety Code*, unless otherwise modified by other provisions of this standard.

3-3.1 Life safety requirements for noninstructional laboratory units shall be in accordance with NFPA 101, *Life Safety Code*, chapter for an industrial occupancy.

Exception: Laboratories covered by NFPA 99, Standard for Health Care Facilities, shall be in accordance with NFPA 101, Life Safety Code, for a health care occupancy.

3-3.2 Life safety requirements for instructional laboratory units for grades 12 and below shall be in accordance with NFPA 101, *Life Safety Code*, for an educational occupancy.

3-3.3 Life safety requirements for instructional laboratory units for above grade 12 shall be in accordance with NFPA 101, *Life Safety Code*, for a business occupancy.

3-4 Means of Access to an Exit.

3-4.1* A second means of access to an exit shall be provided from a laboratory work area if any of the situations described in (a) through (f) exist.

(a) A laboratory work area contains an explosion hazard so located that an incident would block escape from or access to the laboratory work area.

(b) A laboratory work area within a Class A laboratory unit exceeds 46.5 m² (500 ft²).

(c) A laboratory work area within a Class B, Class C, or Class D laboratory unit exceeds 93 m² (1000 ft²).

(d) A hood in a laboratory work area is located adjacent to the primary means of exit access.

(e) There is a compressed gas cylinder in use that:

1. Is larger than lecture bottle size [approximately 5 cm × 33 cm (2 in. × 13 in.)], and

2. Contains a gas that is flammable or has a Health Hazard Rating of 3 or 4, and

3. Could prevent safe egress in the event of accidental release of cylinder contents. (*See Section 8-2.*)

(f) There is a cryogenic container in use that:

1. Contains a flammable gas or has a Health Hazard Rating of 3 or 4, and

2. Could prevent safe egress in the event of accidental release of container contents. (*See Section 8-3.*)

3-4.2 Emergency lighting facilities shall be provided for any laboratory work area requiring a second means of access to an exit in accordance with 3-4.1.

3-4.3 The required exit access doors of all laboratory work areas within Class A or Class B laboratory units shall swing in the direction of exit travel.

3-4.4* The required exit access doors of all laboratory work areas within Class C or Class D laboratory units shall be permitted to swing against the direction of exit travel or shall be permitted to be a horizontal sliding door complying with NFPA 101, *Life Safety Code*, Section 5-9, "Emergency Lighting," 5-9.1, "General."

3-4.5 Emergency lighting in laboratory work areas and exits shall be installed in accordance with NFPA 101, *Life Safety Code*, Section 5-9, "Emergency Lighting," 5-9.1, "General."

3-5* Furniture, Casework, and Equipment. Furniture, casework, and equipment in laboratory work areas shall be arranged so that means of access to an exit can be reached easily from any point.

3-6 Electrical Installation. All electrical installations, including wiring and appurtenances, apparatus, lighting, signal systems, alarm systems, remote control systems, or parts thereof, shall comply with NFPA 70, *National Electrical Code*®.

3-6.1 Electrical receptacles, switches, and controls shall be located so as not to be subject to liquid spills.

3-6.2* Laboratory work areas, laboratory units, and laboratory hood interiors shall be considered as unclassified electrically with respect to Article 500 of NFPA 70, *National Electrical Code*.

Exception: Under some conditions of hazard, it could be necessary to classify a laboratory work area, or a part thereof, as a hazardous location, for the purpose of designating the electrical installations. (See 9-2.2 and 9-2.5.)

Chapter 4 Fire Protection

4-1 General.

4-1.1 All laboratory units shall be provided with fire protection appropriate to the fire hazard as follows:

(a) Portable fire extinguishers (*see Section 4-4*);

(b) Fire alarm systems (*see Section 4-5*); and

(c) Evacuation and emergency plans (*see Section 4-6*).

4-1.2 In addition to the fire protection specified in 4-1.1, laboratory units under some conditions shall be provided with automatic extinguishing systems (*see Section 4-2*) and inside standpipe and hose systems (*see Section 4-3*).

4-1.3 An automatic sprinkler system complying with NFPA 13, *Standard for the Installation of Sprinkler Systems*, shall be provided for the protection of any below-grade laboratory work area.

4-2 Automatic Fire Extinguishing Systems.

4-2.1* Automatic Sprinkler Systems.

4-2.1.1 An automatic sprinkler system, where required by Table 3-1 (a), depending on the construction of the building, the hazard class of the laboratory unit, the construction of the laboratory unit enclosure, and the area of the laboratory unit shall be in accordance with the following:

(a) Automatic sprinkler system protection for Class A and Class B laboratories shall be in accordance with NFPA 13, *Standard for the Installation of Sprinkler Systems*, for Ordinary Hazard Group 2 occupancies.

(b) Automatic sprinkler system protection for Class C and Class D laboratories shall be in accordance with NFPA 13, *Standard for the Installation of Sprinkler Systems*, for Ordinary Hazard Group 1 occupancies.

4-2.1.2* Automatic sprinkler systems shall be inspected, tested, and maintained in service.

4-2.2 Other Automatic Extinguishing Systems. Where required or used in place of automatic sprinkler systems, special hazard extinguishing systems and nonwater automatic extinguishing systems shall be designed, installed, and maintained in accordance with the following standards, as applicable:

- (a) NFPA 11, *Standard for Low-Expansion Foam*;
- (b) NFPA 11A, *Standard for Medium- and High-Expansion Foam Systems*;
- (c) NFPA 12, *Standard on Carbon Dioxide Extinguishing Systems*;
- (d) NFPA 12A, *Standard on Halon 1301 Fire Extinguishing Systems*;
- (e) NFPA 15, *Standard for Water Spray Fixed Systems for Fire Protection*;
- (f) NFPA 17, *Standard for Dry Chemical Extinguishing Systems*;
- (g) NFPA 17A, *Standard for Wet Chemical Extinguishing Systems*; and
- (h) NFPA 69, *Standard on Explosion Prevention Systems*.

4-2.3* The discharge of an automatic fire extinguishing system shall activate an audible fire alarm system on the premises.

4-3 Standpipe and Hose Systems.

4-3.1* In all laboratory buildings that are two or more stories above or below the grade level (level of exit discharge), standpipes shall be installed in accordance with NFPA 14, *Standard for the Installation of Standpipe and Hose Systems*.

4-3.2* Standpipes shall be regularly inspected, tested, and maintained.

4-3.3 Hose lines shall be of an approved type and shall be tested and maintained in accordance with NFPA 1962, *Standard for the Care, Use, and Service Testing of Fire Hose Including Couplings and Nozzles*.

4-4 Portable Fire Extinguishers.

4-4.1 Portable fire extinguishers shall be installed, located, and maintained in accordance with NFPA 10, *Standard for Portable Fire Extinguishers*.

4-4.2 For purposes of sizing and placement of fire extinguishers for Class B fires (NFPA 10, *Standard for Portable Fire Extinguishers*, Table 3-3.1), Class A laboratory units shall be rated as

extra (high) hazard, and Class B, Class C, and Class D laboratory units shall be rated as ordinary (moderate) hazard.

4-5 Fire Alarm Systems.

4-5.1 Fire alarm systems where required by the applicable occupancy chapter of NFPA 101, *Life Safety Code*, shall be installed and maintained in accordance with NFPA 72, *National Fire Alarm Code*.

4-5.2 The fire alarm system, where required, shall be so designed that all personnel endangered by the fire condition or a contingent condition shall be alerted.

4-5.3 The fire alarm system shall alert a local fire brigade or public fire department.

4-6 Fire Prevention.

4-6.1 Fire Prevention Procedures. Fire prevention procedures shall be established. Certain critical areas require special consideration including, but not limited to:

- (a) Handling and storage of chemicals, flammable and combustible liquids, and gases;
- (b) Open flame and spark producing equipment work permit system;
- (c) Arrangements and use of portable electric cords; and
- (d) Smoking area controls.

4-6.2* Maintenance Procedures. Maintenance procedures shall be established.

4-6.3* Emergency Plans.

4-6.3.1 Plans for laboratory emergencies shall be developed. Such plans shall include:

- (a) Alarm activation;
- (b) Evacuation and building re-entry procedures;
- (c) Equipment shutdown procedures or applicable emergency operation;
- (d) Fire-fighting operations; and
- (e) *Nonfire hazards.

4-6.3.2* Procedures for extinguishing clothing fires shall be established.

Chapter 5 Explosion Hazard Protection

5-1 General.

5-1.1 When a laboratory work area or a laboratory unit is considered to contain an explosion hazard, as defined in 2-3.1 and 2-3.2, appropriate protection shall be provided to protect the occupants of the laboratory work area, the laboratory unit, adjoining laboratory units, and nonlaboratory areas. (See Appendix C for further information.)

5-1.2 Protection shall be provided by one or more of the following:

- (a) Limiting amounts of flammable or reactive chemicals or chemicals with unknown characteristics used in or exposed by experiments.
- (b) Special preventive or protective measures for the reactions, equipment, or materials themselves (e.g., high-speed fire detection with deluge sprinklers, explosion-resistant equipment or enclosures, explosion suppression, explosion venting directed to a safe location.) (See 4-2.3.)

(c) Explosion-resistant walls or barricades around the laboratory work area containing the explosion hazard. (See Section 5-2.)

(d) Remote control of equipment to minimize personnel exposure.

(e) Sufficient deflagration venting in outside walls to maintain the integrity of the walls separating the hazardous laboratory work area or laboratory unit from adjoining areas.

(f) Conducting experiments in a detached or isolated building, or outdoors.

5-2 Explosion-Resistant Construction. When explosion-resistant construction is used, adequately designed explosion resistance shall be achieved by one of the following methods:

(a) Reinforced concrete walls;

(b) Reinforced and fully grouted concrete block walls;

(c) Steel walls;

(d) Steel plate walls with energy-absorbing linings;

(e) Barricades, such as those used for explosives operations, constructed of reinforced concrete, sand-filled/wood-sandwich walls, wood-lined steel plate, or earthen or rock berms; or

(f) Specifically engineered construction assemblies.

5-3 Explosion Venting. When explosion venting is used, it shall be designed so that:

(a) Fragments will not strike other occupied buildings or emergency response staging areas; and

(b) Fragments will not strike critical equipment, e.g., production, storage, utility services, and fire protection; or

(c) *Fragments will be intercepted by blast mats, energy-absorbing barrier walls, or earthen berms.

5-4 Unauthorized Access. Doors, gates, fences, or other barriers, properly posted, shall be provided to prevent unauthorized access to laboratory work areas and laboratory units containing an explosion hazard and to the space between explosion vents and fragment barriers.

5-5 Inspection and Maintenance.

5-5.1 Inspection of all protective construction devices and systems shall be conducted at least annually. Required maintenance shall be done to assure integrity and operability.

5-5.2* Explosion shields and special explosion-containing hoods shall be inspected prior to each use for deterioration, especially transparent shields and sight panels in special explosion-containing hoods.

Chapter 6 Laboratory Ventilating Systems and Hood Requirements

6-1 Scope.

6-1.1 This chapter applies to laboratory exhaust systems, including laboratory hoods, special local exhaust devices, and other systems for exhausting air from laboratory work areas in which flammable gases, vapors, or particulate matter are released.

6-1.2 This chapter also contains certain requirements for laboratory air supply systems.

6-1.3 This chapter also contains requirements for identification, inspection, and maintenance of laboratory ventilation systems and hoods.

6-2 Basic Requirements.

6-2.1* This chapter establishes requirements for laboratory ventilation systems. Laboratory ventilation systems shall be designed to ensure that chemicals originating from laboratory operations shall not be recirculated. Release of chemicals into the laboratory shall be controlled by enclosure or capture to prevent flammable concentrations of vapors from reaching ignition sources.

6-2.1.1 NFPA 90A, *Standard for the Installation of Air Conditioning and Ventilating Systems*, contains additional requirements for general environmental ventilating systems.

6-2.1.2 NFPA 91, *Standard for Exhaust Systems for Air Conveying of Materials*, contains additional requirements for general environmental ventilating systems.

6-2.2* Laboratory hoods shall not be relied upon to provide explosion (blast) protection unless specifically designed to do so. (See also C-5.4 and C-5.5 for further information on explosion-resistant hoods and shields.)

6-2.3 For perchloric acid requirements for laboratory hoods, see Section 6-11.

6-3 Supply Systems.

6-3.1* The location and configuration of fresh air intakes shall be chosen to avoid drawing in chemicals or products of combustion coming either from the laboratory building itself or from other structures and devices.

6-3.2* Laboratory units and laboratory work areas in which chemicals are present shall be continuously ventilated.

6-3.3 The air pressure in the laboratory work areas shall be negative with respect to corridors and nonlaboratory areas.

Exception No. 1: Where operations such as those requiring clean rooms preclude a negative pressure relative to surrounding areas, alternate means shall be provided to prevent escape of the atmosphere in the laboratory work area or unit to the surrounding spaces.

Exception No. 2: The static pressure level shall be permitted to undergo momentary variations as the ventilation system components respond to door openings, changes in laboratory hood sash positions, and other activities that can for a short term affect the static pressure.

6-3.4* The location of air supply diffusion devices shall be chosen to avoid air currents that would adversely affect the performance of laboratory hoods, exhaust systems, and fire detection or extinguishing systems. [See Section 4-2, 4-5.2(c), and 6-9.1.]

6-4 Exhaust Air Discharge.

6-4.1* Air exhausted from laboratory hoods and other special local exhaust systems shall not be recirculated. (See also 6-2.1.)

6-4.2* If energy conservation devices are used, they shall be designed in accordance with 6-2.1. Devices that could result in recirculation of exhaust air or exhausted contaminants shall not be used unless designed in accordance with ANSI/AIHA Z9.5, *Laboratory Ventilation*, Sections 4:10.1, "Nonlaboratory Air," and 4:10.2, "General Room Exhaust."

6-4.3 Air exhausted from laboratory work areas shall not pass unducted through other areas.

6-4.4* Air from laboratory units and laboratory work areas in which chemicals are present shall be continuously discharged through duct systems maintained at a negative pressure relative to the pressure of normally occupied areas of the building.

6-4.5* Laboratory hood face velocities and exhaust volumes shall be sufficient to contain contaminants generated within the hood and exhaust them outside of the laboratory building. The hood shall provide confinement of the possible hazards and protection for personnel at all times when chemicals are present in the hood.

6-4.6 Special local exhaust systems, such as snorkels or "elephant trunks," shall have sufficient capture velocities to entrain the chemical being released.

6-4.7 Canopy hoods shall not be used in lieu of laboratory hoods.

6-4.8 Biological safety cabinets shall not be used in lieu of laboratory hoods.

6-4.9 Laminar flow cabinets shall not be used in lieu of laboratory hoods.

6-4.10* Air exhausted from laboratory hoods and special exhaust systems shall be discharged above the roof at a location, height, and velocity sufficient to prevent reentry of chemicals.

6-5 Duct Construction for Hoods and Local Exhaust Systems.

6-5.1* Ducts from laboratory hoods and from local exhaust systems shall be constructed entirely of noncombustible materials.

Exception No. 1: Flexible ducts of combustible construction shall be permitted to be used for special local exhaust systems within a laboratory work area. (See 6-5.2.)

Exception No. 2: Combustible ducts shall be permitted to be used if enclosed in a shaft of noncombustible or limited-combustible construction where they pass through nonlaboratory areas or through laboratory units other than the one they serve. (See 6-5.2.)

Exception No. 3: Combustible ducts shall be permitted to be used if all areas through which they pass are protected with an approved automatic fire extinguishing system, as described in Chapter 4. (See 6-5.2.)

6-5.2 Combustible ducts or duct linings shall have a flame spread index of 25 or less when tested in accordance with NFPA 255, *Standard Method of Test of Surface Burning Characteristics of Building Materials*. Test specimens shall be of the minimum thickness used in the construction of the duct or duct lining.

6-5.3 Duct systems for perchloric acid hoods shall be constructed in accordance with 6-11.3.

6-5.4 Ducts shall be of adequate strength and rigidity to meet the conditions of service and installation requirements and shall be protected against mechanical damage.

6-5.5 Materials used for vibration isolation connectors shall comply with 6-5.2.

6-5.6 Flexible connectors containing pockets in which conveyed material can collect shall not be used in any concealed space or where strong oxidizing chemicals are used (e.g., perchloric acid).

6-5.7 Controls and dampers, where required for balancing or control of the exhaust system, shall be of a type that, in event of failure, will fail open to assure continuous draft. (See 6-10.3.)

6-5.8 Hand holes where installed for damper, sprinkler, or fusible link inspection or resetting and for residue clean-out purposes shall be equipped with tight-fitting covers provided with substantial fasteners.

6-5.9 Manifolding of Laboratory Hood and Ducts.

6-5.9.1 Exhaust ducts from each *laboratory unit* shall be separately ducted to a point outside the building, to a mechanical space, or to a shaft. (See 3-1.6 and 6-10.3.)

6-5.9.2 Connection to a common laboratory hood exhaust duct system shall be permitted to occur at these points.

6-5.9.3 Exhaust ducts from laboratory hoods and other exhaust systems within the same laboratory unit shall be permitted to be combined within that laboratory unit. (See 6-4.1.)

6-6 Duct Velocities. Duct velocities of laboratory exhaust systems shall be high enough to minimize the deposition of liquids or condensable solids in the exhaust systems during normal operations in the laboratory hood.

6-7 Exhausters (Fans), Controls, Velocities, and Discharge.

6-7.1 Fans shall be selected to meet fire, explosion, and corrosion requirements.

6-7.2 Fans conveying both corrosive and flammable or combustible materials shall be permitted to be lined with or constructed of corrosion-resistant materials having a flame spread index of 25 or less when tested in accordance with NFPA 255, *Standard Method of Test of Surface Burning Characteristics of Building Materials*.

6-7.3 Fans shall be located and arranged so as to afford ready access for repairs, cleaning, inspection, and maintenance.

6-7.4* When flammable gases or vapors or combustible dusts are passed through the fans, the rotating element shall be of nonferrous or spark-resistant construction. Alternatively, the casing shall be constructed of or lined with such material. Where there is the possibility of solid material passing through the fan that would produce a spark, both the rotating element and the casing shall be constructed of such material. Nonferrous or spark-resistant materials shall have a flame spread index of 25 or less when tested in accordance with NFPA 255, *Standard Method of Test of Surface Burning Characteristics of Building Materials*.

6-7.5 Motors and their controls shall be located outside the location where flammable or combustible vapors or combustible dusts are generated or conveyed, unless specifically approved for the location and use.

6-7.6* Fans shall be marked with an arrow or other means to indicate proper direction of rotation and with the location of laboratory hoods and exhaust systems served.

6-8 Laboratory Hood Construction. (See also 6-2.2 and Section 6-11.)

6-8.1 Laboratory Hood Interiors.

6-8.1.1 Materials of construction used for the interiors of new laboratory hoods or for the modification of the interiors of existing laboratory hoods shall have a flame spread index of 25 or less when tested according to NFPA 255, *Standard Method of Test of Surface Burning Characteristics of Building Materials*.

Exception: Where special requirements of use dictate, hood interiors shall be permitted to be constructed of materials having a flame spread index greater than 25, if the interior of the hood is provided with automatic fire protection in accordance with 6-10.2.

6-8.1.2* Baffles shall be constructed so that they are unable to be adjusted to materially restrict the volume of air exhausted through the laboratory hood.

6-8.1.3* Laboratory hoods shall be provided with a means of containing minor spills.

6-8.2* Laboratory Hood Sash. The sash, if provided, shall be glazed with material that will provide protection to the operator or the environment against the hazards normally associated with the use of the hood. (See also Appendix C.)

6-8.3 Laboratory Hood Air Bypass. The bypass opening shall be shielded by a grille or solid panel to impede or deflect flying glass or flaming debris in case of a runaway reaction within the hood.

6-8.4* Electrical Devices. In installations where services and controls are within the hood, additional electrical disconnects shall be located within 15 m (50 ft) of the hood and shall be accessible and clearly marked.

Exception: If electrical receptacles are located external to the hood, no additional electrical disconnect shall be required. (See 3-6.1.)

6-8.5 Other Hood Services.

6-8.5.1 For new installations or modifications of existing installations, controls for laboratory hood services (gas, air, water, etc.) shall be located external to the hood and within easy reach.

6-8.5.2 In existing installations where service controls are within the hood, additional shutoffs shall be located within 15 m (50 ft) of the hood and shall be accessible and clearly marked.

6-8.6 Auxiliary Air. For auxiliary air hoods, auxiliary air shall be introduced exterior to the hood face in such a manner that the airflow does not compromise the protection provided by the hood and so that an imbalance of auxiliary air to exhaust air will not pressurize the hood interior.

6-8.7 Flow Monitor.

6-8.7.1 A flow monitor shall be installed on each new laboratory hood.

6-8.7.2 A flow monitor shall also be installed on existing laboratory hoods whenever any modifications or changes are made

that can affect laboratory unit ventilation or the airflow through existing laboratories.

6-9 Laboratory Hood Location.

6-9.1* Laboratory hoods shall be located in areas of minimum air turbulence.

6-9.2 For new installations, laboratory hoods shall not be located adjacent to a single means of access to an exit or high-traffic areas.

6-9.3 Work stations where personnel will spend much of their working day, such as desks or microscope benches, shall not be located directly in front of laboratory hood openings.

6-10 Laboratory Hood Fire Protection.

6-10.1 Automatic fire protection systems shall not be required in laboratory hoods or exhaust systems.

Exception No. 1: Automatic fire protection shall be required for existing hoods having interiors with a flame spread index greater than 25 in which flammable liquids are handled.

Exception No. 2: If a hazard assessment shows that an automatic extinguishing system is required for the laboratory hood, then the applicable automatic fire protection system standard shall be followed.

6-10.2 Automatic fire protection systems, where provided, shall comply with the following standards, as applicable:

- (a) NFPA 12, *Standard on Carbon Dioxide Extinguishing Systems*;
- (b) NFPA 12A, *Standard on Halon 1301 Fire Extinguishing Systems*;
- (c) NFPA 13, *Standard for the Installation of Sprinkler Systems*;
- (d) NFPA 15, *Standard for Water Spray Fixed Systems for Fire Protection*;
- (e) NFPA 17, *Standard for Dry Chemical Extinguishing Systems*; and
- (f) NFPA 17A, *Standard for Wet Chemical Extinguishing Systems*.

6-10.2.1 The fire extinguishing system shall be suitable to extinguish fires within the laboratory hood under the anticipated conditions of use.

6-10.3 Automatic fire dampers shall not be used in laboratory hood exhaust systems. Fire detection and alarm systems shall not be interlocked to automatically shut down laboratory hood exhaust fans.

*Exception:** Where a gaseous fire extinguishing system is used to protect a laboratory hood, the protected laboratory hood shall be independent of all other laboratory hoods and its exhaust system shall be permitted to be interlocked to shut down upon actuation of the fire extinguishing system.

6-11 Perchloric Acid Hoods.

6-11.1* Perchloric acid heated above ambient temperatures shall only be used in a laboratory hood specifically designed for its use and identified as "For Perchloric Acid Operations."

Exception: Hoods not specifically designed for use with perchloric acid shall be permitted to be used where the vapors are trapped and scrubbed before they are released into the hood. (See also 9-1.2.4.)

6-11.2 Perchloric acid hoods and exhaust ductwork shall be constructed of materials that are acid resistant, nonreactive, and impervious to perchloric acid.

6-11.3 The exhaust fan shall be acid resistant and spark-resistant. The exhaust fan motor shall not be located within the ductwork. Drive belts shall be conductive and shall not be located within the ductwork.

6-11.4 Ductwork for perchloric acid hoods and exhaust systems shall take the shortest and straightest path to the outside of the building and shall not be manifolded with other exhaust systems. Horizontal runs shall be as short as possible, with no sharp turns or bends. The ductwork shall provide a positive drainage slope back into the hood. Ductwork shall consist of sealed sections. Flexible connectors shall not be used.

6-11.5 Sealants, gaskets, and lubricants used with perchloric acid hoods, ductwork, and exhaust systems shall be acid resistant and nonreactive with perchloric acid.

6-11.6* A water spray system shall be provided for washing down the hood interior behind the baffle and the entire exhaust system. The hood work surface shall be watertight with a minimum depression of 13 mm ($\frac{1}{2}$ in.) at the front and sides. An integral trough shall be provided at the rear of the hood to collect wash-down water.

6-11.7 The hood baffle shall be removable for inspection and cleaning.

6-11.8* If a laboratory hood or exhaust system was used for perchloric acid heated above ambient temperature, tests shall be conducted for explosive perchlorates before any inspection, cleaning, maintenance, or any other work is done on any part of the exhaust system or hood interior.

6-11.9 Prior to using a perchloric acid hood for any purpose, the hood shall be water-washed and shall be tested according to 6-11.8 to assure no presence of residual perchlorates.

6-12 Identification of Laboratory Hood Systems.

6-12.1* Special use laboratory hoods and special use local exhaust systems shall be identified to indicate their intended use.

6-12.2 A sign shall be affixed to each hood containing the following information from the last inspection:

- (a) Inspection interval;
- (b) Last inspection date;
- (c) Average face velocity;
- (d) Location of fan that serves hood; and
- (e) Inspector's name.

Exception: In lieu of a sign, a properly maintained log of all hoods giving the above information shall be deemed acceptable.

6-13 Inspection, Testing, and Maintenance.

6-13.1* When installed or modified and at least annually thereafter, laboratory hoods, laboratory hood exhaust systems, and laboratory special exhaust systems shall be inspected and tested. The following inspections and tests, as applicable, shall be made:

- (a) Visual inspection of the physical condition of the hood interior, sash, and ductwork (*see* 5-5.2);
- (b) Flow monitor;
- (c) Low airflow and loss-of-airflow alarms at each alarm location;
- (d) Face velocity;

- (e) Verification of inward airflow over the entire hood face; and

- (f) Changes in work area conditions that might affect hood performance.

6-13.2 Deficiencies in hood performance shall be corrected or:

- (a) The activity within the hood shall be restricted to the capability of the hood; or
- (b) The hood shall not be used.

6-13.3 Laboratory hood face velocity profile or hood exhaust air quantity shall be checked after any adjustment to the ventilation system balance.

6-13.4 Detectors and Alarms. Air system flow detectors, if installed, shall be inspected and tested annually. Where potentially corrosive or obstructive conditions exist, the inspection and test frequency shall be increased appropriately.

6-13.5 Fans and Motors.

6-13.5.1* Air supply and exhaust fans, motors, and components shall be inspected at least annually.

6-13.5.2 When airflow detectors are not provided or airflow-rate tests are not made, fan belts shall be inspected quarterly. Frayed or broken belts shall be replaced promptly. When double sheaves and belts are employed, the inspection frequency shall be permitted to be semiannual.

6-13.6 Fixed fire extinguishing systems protecting filters shall be inspected quarterly for accumulation of deposits on nozzles. Nozzles shall be cleaned as necessary.

Chapter 7 Chemical Storage, Handling, and Waste Disposal

7-1* Ordering Procedures. When a chemical is ordered, steps shall be taken to determine the hazards and to transmit that information to those who will receive, store, use, or dispose of the chemical. Restrictions imposed by governmental regulations and in-house rules shall be followed.

7-2 Handling and Storage.

7-2.1 Facilities.

7-2.1.1 Chemicals shall not be brought into a laboratory work area unless design, construction, and fire protection of receiving and storage facilities are commensurate with the quantities and hazards of chemicals involved.

7-2.1.2 Safe storage facilities shall be provided for materials having unique physical or hazardous properties, such as temperature sensitivity, water reactivity, or explosibility. (*See A-7-1 for sources of additional information.*)

7-2.1.3 In instructional laboratory work areas, no container for Class I or Class II liquids shall exceed a capacity of 4 L (1.1 gal).

Exception: Safety cans shall be permitted to have an 8 L (2.1 gal) capacity.

7-2.2 Handling.

7-2.2.1* Receiving, transporting, unpacking, and dispensing of chemicals and other hazardous materials shall be carried out by trained personnel in such locations and manner as to minimize hazards from flammable, reactive, or toxic materials.

Table 7-2 Maximum Allowable Container Capacity

Container Type	Flammable Liquids ²			Combustible Liquids ²	
	IA	IB	IC	II	III A
Glass	500 ml (1 pt) ³	1 L (1 qt) ³	4 L (1.1 gal)	4 L (1.1 gal)	20 L (5 gal) ⁴
Metal (other than DOT drums) or approved plastic	4 L (1.1 gal)	20 L (5 gal) ¹	20 L (5 gal) ⁴	20 L (5 gal) ⁴	20 L (5 gal) ⁴
Safety cans	10 L (2.6 gal)	20 L (5 gal) ⁴	20 L (5 gal) ⁴	20 L (5 gal) ⁴	20 L (5 gal) ⁴
Metal drum (DOT spec.)	N/A ⁵	20 L (5 gal) ⁴	20 L (5 gal) ⁴	227 L (60 gal) ⁴	227 L (60 gal) ⁴
Polyethylene (DOT Spec. 34, UN 1H1, or as authorized by DOT exemption)	4 L (1.1 gal)	20 L (5 gal) ⁴	20 L (5 gal) ⁴	227 L (60 gal) ⁴	227 L (60 gal) ⁴

¹This table is taken from Table 4-2.3 of NFPA 30, *Flammable and Combustible Liquids Code*, except for allowable quantities of flammable liquids in metal (DOT specification) drums.

²See Section 1B-1 for definitions of the various classes of flammable and combustible liquids.

³See Exception No. 1 of 7-2.3.2 and A-7-2.3.2.

⁴See 7-2.1.3.

⁵N/A = Not Allowed. See Exception No. 2 of 7-2.3.2.

7-2.2.2* Materials of construction for ducts, piping, and vessels shall be compatible with materials to be transferred or handled.

7-2.2.3 Supply piping for flammable and combustible liquid supply systems shall comply with NFPA 30, *Flammable and Combustible Liquids Code*.

7-2.2.4 Before a chemical material is used, the user shall determine that information and facilities are available for safe disposal of hazardous materials and waste products.

7-2.2.5 Class I liquids shall not be stored or transferred from one vessel to another in any exit access.

7-2.2.6* Transfer of Class I liquids to smaller containers from bulk stock containers not exceeding 19 L (5 gal) in capacity inside a laboratory building or laboratory work area shall be made:

(a) In a laboratory hood; or

(b) In an area provided with ventilation adequate to prevent accumulations of flammable vapor/air mixtures from exceeding 25 percent of the lower flammable limit; or

(c) Inside liquid storage areas specifically designed and protected for dispensing Class I flammable liquids meeting the requirements of NFPA 30, *Flammable and Combustible Liquids Code*.

7-2.2.7* Transfer of Class I liquids from containers of 19 L (5 gal) or more capacity shall be carried out in:

(a) A separate area outside the building; or

(b) Inside liquid storage areas specifically designed and protected for dispensing Class I flammable liquids meeting the requirements of NFPA 30, *Flammable and Combustible Liquids Code*.

7-2.2.8* Class I liquids shall not be transferred between conductive containers of greater than 4 L (1.1 gal) capacity unless the containers are electrically interconnected by direct bonding or by indirect bonding through a common grounding system. When dispensing Class I liquids involves nonconductive containers larger than 4 L (1.1 gal), which can be difficult to bond or ground, special dispensing procedures commensurate with the electrical characteristics of the liquid shall be developed and implemented.

7-2.3* Storage.

7-2.3.1 Hazardous chemicals stored in the open in the laboratory work area shall be kept to the minimum necessary for the work being done.

7-2.3.2* Container types and maximum capacities shall comply with Table 7-2.

Exception No. 1: Glass containers as large as 4 L (1.1 gal) shall be permitted to be used if needed and if the required purity would be adversely affected by storage in a metal or an approved plastic container, or if the liquid would cause excessive corrosion or degradation of a metal or an approved plastic container.

*Exception No. 2: Drums of not more than 227 L (60 gal) capacity shall be permitted in a separate area inside the building if the inside area meets the requirements of NFPA 30, *Flammable and Combustible Liquids Code*.*

7-2.3.3 Chemical inventories shall be maintained within the prescribed capacities of the storage facility.

7-2.3.4* Incompatible materials shall be segregated to prevent accidental contact with one another.

7-2.3.5* Containers of materials that might become hazardous upon prolonged storage shall be dated when first opened. At the end of 6 months, the material shall be evaluated or tested for continued safe use. Material found to be safe or that can be treated to make it safe shall be permitted to be redated and retained for an additional 6-month period. All other material shall be safely discarded.

7-2.3.6* Storage cabinets used in laboratories shall not be required to be vented for fire protection purposes.

7-2.3.7 Laboratory storage facilities shall be inspected to ensure compliance with the provisions of this chapter.

Chapter 8 Compressed and Liquefied Gases

8-1 Compressed and Liquefied Gases in Cylinders. See Appendix E and Appendix F.

8-1.1 Cylinders shall be handled only by trained personnel. (*See Appendix E and Appendix F.*)

8-1.2* Cylinders that are not necessary for current laboratory requirements shall be stored in a safe location outside the laboratory work area.

Exception: Nominal 0.5-kg (1-lb) propane cylinders, made for consumer use, shall be exempt from this requirement.

8-1.3* Any compressed gas cylinder or container used at pressures over 103 kPa (15 psig) shall be fabricated to the specifications of or authorized for use by the U.S. Department of Transportation (DOT), Transport Canada (TC), or Section VIII, ASME *Boiler and Pressure Vessel Code*. The container shall be marked to show the authorizing code and its working pressure at 21°C (70°F).

Exception: Vessels whose physical size, operating pressure, or both, are outside the scope of the referenced code(s), shall be constructed in accordance with the philosophy and guidance of the ASME code, and shall not require marking.

8-1.4 Cylinders of all gases having Health Hazard Ratings of 3 or 4 and cylinders of gases having a Health Hazard Rating of 2 with no physiological warning properties shall be kept in a continuously mechanically ventilated hood or other continuously mechanically ventilated enclosure. There shall be no more than three cylinders of gases with Health Hazard Ratings of 3 or 4 per hood or other enclosure. (See A-8-1.3.)

8-1.5 Cylinder Safety.

8-1.5.1 Cylinders shall be used safely.

8-1.5.2 Cylinders shall be secured from tipping over by holders designed for such service.

8-1.5.3 Cylinders in the laboratory shall be equipped with a pressure regulator designed and marked for its maximum use pressure.

8-1.5.3.1 The regulator system shall be equipped with two gauges, either on the regulator or remote to the regulator, so installed to show both the cylinder pressure and the outlet pressure.

8-1.5.3.2 Where the source cylinder is outside of the laboratory, a station regulator and gauge shall be installed at the point of use to show outlet pressure.

8-1.5.4 Cylinders shall have a manual shutoff valve. A quick connect shall not be used in place of a shutoff valve. Line regulators that have their source away from the point of use shall have a manual shutoff valve near the point of use.

8-1.6 Cylinders in Use.

8-1.6.1 The number of cylinders in use in the laboratory work area shall comply with Table 8-1. The number of lecture bottle cylinders [approximately 5 cm × 33 cm (2 in. × 13 in.)] shall be limited to 25.

Exception: In instructional laboratory units (as defined in this standard), the total number of cylinders shall be reduced to three maximum size cylinders (as defined in this standard) or 10 lecture bottle size [approximately 5 cm × 33 cm (2 in. × 13 in.)] cylinders.

8-1.6.2 The total quantity of cylinders (as defined in this standard) of gases allowed within a single laboratory work area shall not exceed the sum total of the limits of each of the three listed categories, for the type of space (sprinklered or non-sprinklered).

8-1.6.3 Cylinders shall be attached to an instrument for use by means of a regulator.

8-1.6.4 Excess cylinders shall not be stored in the laboratory.

8-1.6.5 A compressed gas cylinder shall be considered to be "in use" if it is:

- Connected through a regulator to deliver gas to a laboratory operation; or
- Connected to a manifold being used to deliver gas to a laboratory operation; or
- A single cylinder secured alongside the cylinder in (a) above as the reserve cylinder for (a).

8-2 Storage and Piping Systems.

8-2.1* The method of storage and piping systems for compressed and liquefied gases shall comply with the applicable requirements of NFPA standards, including the following:

- NFPA 50, *Standard for Bulk Oxygen Systems at Consumer Sites*;
- NFPA 50A, *Standard for Gaseous Hydrogen Systems at Consumer Sites*;
- NFPA 50B, *Standard for Liquefied Hydrogen Systems at Consumer Sites*;
- NFPA 51, *Standard for the Design and Installation of Oxygen-Fuel Gas Systems for Welding, Cutting, and Allied Processes*;
- NFPA 54, *National Fuel Gas Code*;
- NFPA 55, *Standard for the Storage, Use, and Handling of Compressed and Liquefied Gases in Portable Cylinders*; and
- NFPA 58, *Standard for the Storage and Handling of Liquefied Petroleum Gases*.

8-2.2 Systems for other compressed gases and for cryogenic materials shall comply with the manufacturers' design and specifications.

8-2.3* Manual shutoff valves shall be provided at each point of supply and at each point of use.

Exception No. 1: If the containers supplying the piping system are equipped with shutoff valves, a separate valve on the piping system shall not be required.

Exception No. 2: A valve at the point of use shall not be required if there is a supply shutoff valve within immediate reach of the point of use.

Table 8-1 Maximum Number of Compressed or Liquefied Gas Cylinders in Laboratory Work Areas¹

	Flammable or Oxidizing Gases		Liquefied Flammable Gases		Gases with Health Hazard Rating of 3 or 4
	Sprinklered Space	Nonsprinklered Space	Sprinklered Space	Nonsprinklered Space	Sprinklered or Nonsprinklered Space
Max. no. of cylinders per 46.5 m ² (500 ft ²) or less	6	3	3	2	3

¹See 8-1.6.1 for total cylinders allowed in laboratory work area.
For SI units: 1.0 in. = 0.25 ft² = 46 m²; 1.0 ft³ = 28.3 L.

8-2.4 Each and every portion of a piping system shall have uninterruptible pressure relief. Any part of the system that can be isolated from the rest of the system shall have adequate pressure relief.

Exception: Piping designed for a pressure greater than the maximum system pressure that can be developed under abnormal conditions.

8-2.4.1 A pressure relief system shall be designed to provide a discharge rate sufficient to avoid further pressure increase and shall vent to a safe location.

8-2.5* Permanent piping shall be identified at the supply point and at each discharge point with the name of the material being transported.

8-2.6 Piping systems, including regulators, shall not be used for gases, other than those for which they are designed and identified.

*Exception.** A piping system shall be permitted to be converted from one gas service to another after a thorough review of the design specifications, materials of construction, and service compatibility is made and other appropriate modifications have been made.

8-3 Outdoor Installation of Compressed Gas Cylinders for Servicing Laboratory Work Areas (Located Outside of Laboratory Work Areas).

8-3.1 Toxic or flammable gas cylinders shall not be installed near windows, doors, or other openings to the laboratory workplace.

8-3.2 Toxic or flammable gas cylinders shall not be installed near ventilation intake ducts. They shall be kept a minimum of 9 m (30 ft) away.

8-4 Cryogenic Fluids.

8-4.1 All system components used for cryogenic fluids shall be selected and designed for such service. Design pressure for vessels and piping shall be not less than 150 percent of maximum pressure relief.

8-4.1.1* Systems or apparatus handling a cryogenic fluid that can cause freezing or liquefaction of the surrounding atmosphere shall be designed to prevent contact of the condensed air with organic materials. Systems or apparatus handling liquid oxygen shall be designed to prevent contact of the oxygen with organic materials.

8-4.2 Pressure relief of vessels and piping handling cryogenic fluids shall comply with applicable requirements of Section 8-2.

8-4.3 The space in which cryogenic systems are located shall be ventilated commensurate with the properties of the specific cryogenic fluid in use.

Chapter 9 Laboratory Operations and Apparatus

9-1 Operations.

9-1.1 Hazards of Chemicals and Chemical Reactions.

9-1.1.1* Before laboratory tests or chemical reactions are begun, evaluations shall be made for hazards that can be encountered or generated during the course of the work. Evaluations shall include the hazards associated with the properties and the reactivity of the materials used and any

intermediate and end products that can be formed, hazards associated with the operation of the equipment at the operating conditions, and hazards associated with the proposed reactions, e.g., oxidation, polymerization. (See also 9-1.1.3 below.)

9-1.1.2 Regular reviews of laboratory operations and procedures shall be conducted with special attention given to any change in materials, operations, or personnel.

9-1.1.3* Where reactions are being performed to synthesize materials, the hazard characteristics of which have not yet been determined by test, precautions shall be employed to control the highest hazard possible based on a known hazard of similar material. Where use of a new material might present a severe explosion potential, initial experiments or tests shall be conducted in an enclosure that is designed to protect people and property from potential explosion damage. (See Chapter 5.)

9-1.1.4 Unattended or automatic laboratory operations involving hazardous chemicals shall be provided with regular surveillance for abnormal conditions. (See 9-1.2.3 and 9-2.4.1.)

9-1.2 Heating Operations.

9-1.2.1 All heating of flammable or combustible liquids shall be conducted so as to minimize fire hazards.

9-1.2.2 Provisions shall be made to contain liquid that might be accidentally released from glass apparatus containing more than 0.25 L (8.4 oz) of flammable liquid or combustible liquid heated to its flash point. Supplementary fire extinguishing equipment shall be provided, if necessary.

9-1.2.3 Unattended operations shall be provided with override control and automatic shutdown to prevent system failure that can result in fire or explosion.

9-1.2.4 Strong oxidizing materials, such as perchloric acid, shall not be heated by gas flames or oil baths.

9-1.3 Distillation Operations.

9-1.3.1 Distillations shall be conducted in equipment designed and fabricated for this use and shall be properly assembled with consideration being given to fire hazards from vent gases and possible equipment breakage or failure. Care shall be taken to avoid the presence of unstable components in the still pot (e.g., peroxides) and to avoid overheating still contents.

9-1.3.2 Glass equipment used for distillations shall be inspected for cracks, scratches, and other defects prior to each use. Faulty glass equipment shall be discarded or repaired.

9-1.4* Other Separation Operations. Filtrations, extractions, sublimations, adsorptions, evaporations, centrifuging operations, and other separation techniques that involve flammable or combustible materials shall be protected from ignition sources and shall be provided with ventilation that prevents the accumulation of an ignitable concentration of vapors in the work area.

9-1.5 Mixing and Grinding Operations. Mixing, grinding, stirring, and agitating operations involving flammable and combustible materials shall require the same precautions against fire as set forth in 9-1.4. Precautions shall be taken to avoid local overheating during grinding and mixing of solids. Care shall be taken to avoid fire or explosion hazards from flammable or combustible materials.

9-1.6 Other Operations.

9-1.6.1 Other laboratory operations, such as reactions at temperatures and pressures either above or below ambient conditions, shall be conducted in a manner that minimizes hazards. Shielding shall be used whenever there is a reasonable probability of explosion or vigorous chemical reaction, and associated hazards, during charging, sampling, venting, and discharge of products. (See Chapter 5 and 9-2.6.3.)

9-1.6.2 Glass equipment operated under either vacuum or pressure shall be shielded, wrapped with tape, or otherwise protected from shattering during use.

9-1.6.3* Quantities of reactants shall be limited and procedures developed to control or isolate vigorous or exothermic reactions.

9-1.6.4 Flammable or combustible vapors evolved during drying operations shall be condensed, trapped, or vented to avoid ignition.

9-1.6.5 Spraying of flammable or combustible paint and varnishes shall comply with the requirements of NFPA 33, *Standard for Spray Application Using Flammable or Combustible Materials*.

9-1.6.6 Flammable liquids stored in refrigerated equipment shall be in closed containers. (See 9-2.2.)

9-2 Apparatus.

9-2.1 General.

9-2.1.1 Apparatus shall be installed in compliance with applicable requirements of NFPA standards including NFPA 70, *National Electrical Code*.

9-2.1.2 Operating controls shall be accessible under normal and emergency conditions.

9-2.2 Refrigeration and Cooling Equipment.

9-2.2.1 Each refrigerator, freezer, or cooler shall be prominently marked to indicate whether or not it meets the requirements for safe storage of flammable liquids.

9-2.2.2* Refrigerators, freezers, and other cooling equipment used to store or cool flammable liquids shall be designed or modified as follows:

(a) Any electrical equipment located within the outer shell, within the storage compartment, on the door, or on the door frame shall meet the requirements for Class I, Division 1 locations, as described in Article 501 of NFPA 70, *National Electrical Code*.

(b) Electrical equipment mounted on the outside of the storage compartment shall either:

1. Meet the requirements for Class I, Division 2 locations, or
2. Be installed above the storage compartment, or
3. Be installed on the outside surface of the equipment where exposure to hazardous concentrations of vapors will be minimal.

9-2.2.3 Refrigerators, freezers, and cooling equipment located in a laboratory work area designated as a Class I location, as specified in the exception to 3-6.2, shall be approved for Class I, Division 1 or 2 locations and shall be installed in accordance with Article 501 of NFPA 70, *National Electrical Code*.

9-2.3 Heating Equipment.

9-2.3.1 All unattended electrical heating equipment shall be equipped with a manual reset over-temperature shutoff switch, in addition to normal temperature controls, if over-heating could result in a fire or explosion.

9-2.3.2 Heating equipment with circulation fans shall be equipped with an interlock arranged to disconnect current to the heating elements if the fan fails.

9-2.3.3 Burners, induction heaters, ovens, furnaces, and other heat-producing equipment shall be located a safe distance from areas where temperature-sensitive and flammable materials and compressed gases are handled.

9-2.3.4 Oven and furnace installations shall comply with NFPA 86, *Standard for Ovens and Furnaces*.

9-2.3.5* Laboratory heating equipment such as ovens, furnaces, environmental chambers, and other heated enclosures shall not be used to heat, store, or test flammable or combustible liquids or aerosols containing flammable gases unless the equipment is designed or modified to prevent internal explosion.

9-2.4 Heated Constant Temperature Baths.

9-2.4.1 Electrically heated constant temperature baths shall be equipped with over-temperature shutoff switches in addition to normal temperature controls, if overheating could result in a fire or an explosion.

9-2.4.2 Bath containers shall be of noncombustible materials.

9-2.4.3 Baths handling flammable liquids or combustible liquids heated to their flash points shall be placed in a laboratory hood or shall be vented to a safe location to control vapors.

9-2.5 Electric Motors. Electric motors are required to be suitable for Class I, Division 2 locations when flammable and combustible liquids or flammable gas concentrations can produce hazardous concentrations of flammable mixtures.

Exception: Electrical motors shall be exempt from this requirement if they are located in laboratory hoods or provided with special local ventilation that will prevent flammable concentrations of gases or vapors from reaching the motor.

9-2.6 Pressure Equipment.

9-2.6.1* Pressure vessels require specialized design beyond the scope of normal workshop practice. Equipment used at pressures above 103 kPa gauge (15 psig) shall be designed and constructed by qualified individuals for use at the expected temperature, pressure, and other operating conditions affecting safety.

9-2.6.2 Pressure equipment shall be fitted with a pressure relief device, such as a rupture disc or a relief valve. The pressure relief device shall be vented to a safe location.

9-2.6.3 Equipment operated at pressures above 103 kPa gauge (15 psig), such as autoclaves, steam sterilizers, reactors, and calorimeters, shall be operated and maintained according to manufacturers' instructions, the design limitations of the equipment, and applicable codes and regulations. Such equipment shall be inspected on a regular basis. Any significant change in the condition of the equipment, such as corrosion, cracks, distortion, scale formation, or general chemical attack, or any weakening of the closure, or any inability of the equipment to maintain pressure, shall be documented. This equipment shall be removed from service immediately and shall not be returned to service until approved by a qualified person.

9-2.6.4 Any pressure equipment that has been found to be degraded shall be derated or discarded, whichever is appropriate.

9-2.7 Analytical Instruments.

9-2.7.1 Analytical instruments, such as infrared, ultraviolet, atomic absorption, X-ray, mass spectrometers, chromatographs, and thermal analyzers, shall be installed in accordance with the manufacturers' instructions and applicable standards and codes.

9-2.7.2 Analytical instruments shall be operated in accordance with manufacturers' instructions or approved recommended operating procedures. Hazards to personnel from high voltage, vapors or fumes, radiation, flames, flashbacks, and explosions shall be minimized.

Chapter 10 Hazard Identification

10-1* Identification of Entrances. Entrances to laboratory units, laboratory work areas, storage areas, and associated facilities shall be identified by signs to warn emergency response personnel of unusual or severe hazards that are not directly related to the fire hazard of contents. The hazards shall be communicated in the plans for fire fighting. (See 4-6.3.1.)

10-2* Exhaust Systems. Exhaust systems used for the removal of hazardous materials shall be identified to warn personnel of the possible hazards.

10-3 Labeling of Containers.

10-3.1 Content identification, including precautionary information, shall be provided directly on all original and subsequent containers of hazardous chemicals, except those being used in ongoing experiments.

10-3.2 Containers of materials that become hazardous upon prolonged storage shall be dated when first opened, to facilitate hazard control. (See 7-2.3.5 and A-7-2.3.5.)

Chapter 11 Referenced Publications

11-1 The following documents or portions thereof are referenced within this standard and shall be considered part of the requirements of this document. The edition indicated for

each reference is the current edition as of the date of the NFPA issuance of this document.

11-1.1 NFPA Publications. National Fire Protection Association, 1 Batterymarch Park, P.O. Box 9101, Quincy, MA 02269-9101.

NFPA 10, *Standard for Portable Fire Extinguishers*, 1994 edition.

NFPA 11, *Standard for Low-Expansion Foam*, 1994 edition.

NFPA 11A, *Standard for Medium- and High-Expansion Foam Systems*, 1994 edition.

NFPA 12, *Standard on Carbon Dioxide Extinguishing Systems*, 1993 edition.

NFPA 12A, *Standard on Halon 1301 Fire Extinguishing Systems*, 1992 edition.

NFPA 13, *Standard for the Installation of Sprinkler Systems*, 1996 edition.

NFPA 14, *Standard for the Installation of Standpipe and Hose Systems*, 1996 edition.

NFPA 15, *Standard for Water Spray Fixed Systems for Fire Protection*, 1996 edition.

NFPA 17, *Standard for Dry Chemical Extinguishing Systems*, 1994 edition.

NFPA 17A, *Standard for Wet Chemical Extinguishing Systems*, 1994 edition.

NFPA 30, *Flammable and Combustible Liquids Code*, 1996 edition.

NFPA 33, *Standard for Spray Application Using Flammable or Combustible Materials*, 1995 edition.

NFPA 50, *Standard for Bulk Oxygen Systems at Consumer Sites*, 1996 edition.

NFPA 50A, *Standard for Gaseous Hydrogen Systems at Consumer Sites*, 1994 edition.

NFPA 50B, *Standard for Liquefied Hydrogen Systems at Consumer Sites*, 1994 edition.

NFPA 51, *Standard for the Design and Installation of Oxygen-Fuel Gas Systems for Welding, Cutting, and Allied Processes*, 1992 edition.

NFPA 54, *National Fuel Gas Code*, 1996 edition.

NFPA 55, *Standard for the Storage, Use, and Handling of Compressed and Liquefied Gases in Portable Cylinders*, 1993 edition.

NFPA 58, *Standard for the Storage and Handling of Liquefied Petroleum Gases*, 1995 edition.

NFPA 69, *Standard on Explosion Prevention Systems*, 1992 edition.

NFPA 70, *National Electrical Code*, 1996 edition.

NFPA 72, *National Fire Alarm Code*, 1996 edition.

NFPA 80, *Standard for Fire Doors and Fire Windows*, 1995 edition.

NFPA 86, *Standard for Ovens and Furnaces*, 1995 edition.

NFPA 90A, *Standard for the Installation of Air Conditioning and Ventilating Systems*, 1996 edition.

NFPA 91, *Standard for Exhaust Systems for Air Conveying of Materials*, 1995 edition.

NFPA 99, *Standard for Health Care Facilities*, 1996 edition.

NFPA 101, *Life Safety Code*, 1994 edition.

NFPA 255, *Standard Method of Test of Surface Burning Characteristics of Building Materials*, 1996 edition.

NFPA 495, *Explosive Materials Code*, 1996 edition.

NFPA 704, *Standard System for the Identification of the Hazards of Materials for Emergency Response*, 1996 edition.

NFPA 1962, *Standard for the Care, Use, and Service Testing of Fire Hose Including Couplings and Nozzles*, 1993 edition.

11-1.2 AIHA Publication. American Industrial Hygiene Association, P.O. Box 8390, 345 White Pond Road., Akron, OH 44320.

ANSI/AIHA Z9.5, *Laboratory Ventilation*, 1992.

11-1.3 ASME Publication. American Society of Mechanical Engineers, 345 East 47th Street, New York, NY 10017.

ASME, *Boiler and Pressure Vessel Code*, Section VIII, 1995.

11-1.4 ASTM Publication. American Society for Testing and Materials, 1916 Race Street, Philadelphia, PA 19103.

ASTM D 5, *Standard Test Method for Penetration of Bituminous Materials*, 1994.

11-1.5 Transport Canada Publication. Transport Canada, Transport Canada Building, Place de Ville Tower C, 21st Floor, Ottawa, ON K1A 0N5, Canada.

Transportation of Dangerous Goods.

11-1.6 U.S. Government Publication. U.S. Government Printing Office, Superintendent of Documents, Washington, DC 20402.

Title 49, *Code of Federal Regulations*, Parts 100 to end.

Appendix A Explanatory Material

This Appendix is not a part of the requirements of this NFPA document but is included for informational purposes only.

A-1-1.3 See Figure A-1-1.3 for determining the applicability of NFPA 45 to a lab setting. Existing laboratories using chemicals that are not in compliance with this standard should be permitted to be continued in use if they provide protection to life and adjoining property that is equivalent to that in this standard.

A-1-3.2 Table on Using NFPA Documents for Laboratories. The following are some considerations in determining which document (NFPA 45 or 99, *Standard for Health Care Facilities*) should be consulted first when designing or operating a laboratory.

Table A-1-3.2 Use of NFPA Documents for Laboratories

Location of Laboratory	Primary Reference Document
1. Laboratory in a building with inpatients	99
2. Laboratory in a building with outpatients incapable of self-preservation	99
3. Laboratory in a building with outpatients capable of self-preservation	45
4. All other laboratories	45

A-1-4 Approved. The National Fire Protection Association does not approve, inspect, or certify any installations, procedures, equipment, or materials; nor does it approve or evaluate testing laboratories. In determining the acceptability of installations, procedures, equipment, or materials, the authority having jurisdiction may base acceptance on compliance with NFPA or other appropriate standards. In the absence of such standards, said authority may require evidence of proper installation, procedure, or use. The authority having jurisdiction may also refer to the listings or labeling practices of an organization concerned with product evaluations that is in a position to determine compliance with appropriate standards for the current production of listed items.

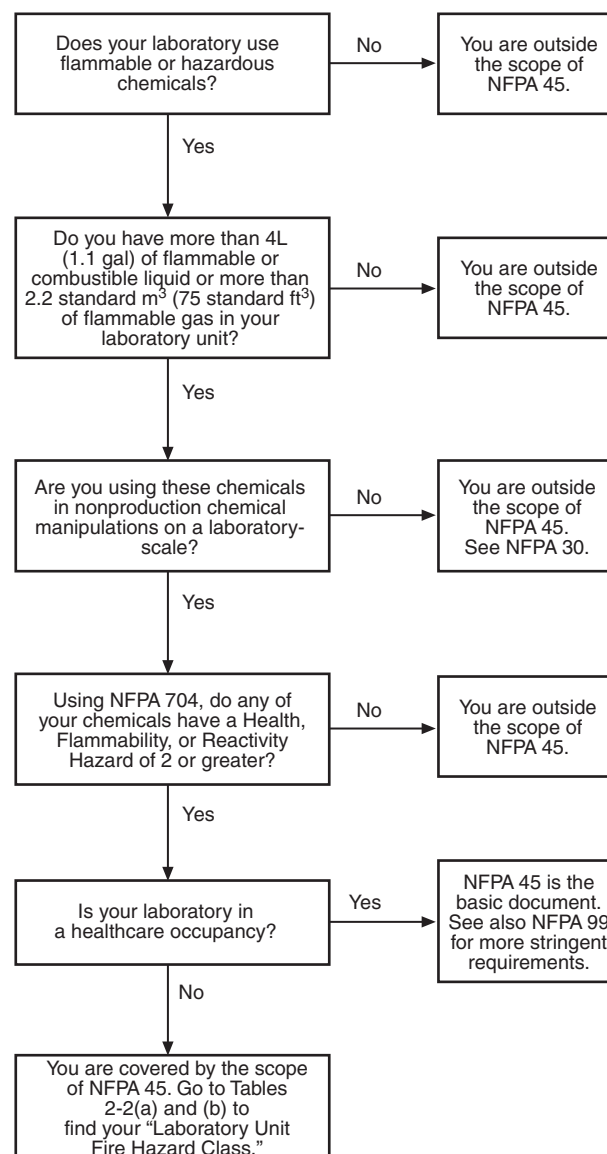


Figure A-1-1.3 Guide for determining the applicability of NFPA 45 to a laboratory setting.

A-1-4 Authority Having Jurisdiction. The phrase “authority having jurisdiction” is used in NFPA documents in a broad manner, since jurisdictions and approval agencies vary, as do their responsibilities. Where public safety is primary, the authority having jurisdiction may be a federal, state, local, or other regional department or individual such as a fire chief; fire marshal; chief of a fire prevention bureau, labor department, or health department; building official; electrical inspector; or others having statutory authority. For insurance purposes, an insurance inspection department, rating bureau, or other insurance company representative may be the authority having jurisdiction. In many circumstances, the property owner or his or her designated agent assumes the role of the authority having jurisdiction; at government installations, the commanding officer or departmental official may be the authority having jurisdiction.

A-1-4 Chemical. For fire hazard ratings of many chemicals, see NFPA 49, *Hazardous Chemicals Data*, and NFPA 325, *Guide to Fire Hazard Properties of Flammable Liquids, Gases, and Volatile Solids*.

A-1-4 Cryogenic Fluid. See National Safety Council Data Sheet 1-688-86, *Cryogenic Fluids in the Laboratory*.

A-1-4 Educational Occupancy. See NFPA 101, *Life Safety Code*, Sections 10-7, 10-8, 11-7, 11-8, and 11-9.

A-1-4 Explosive Material. For a more complete definition, see NFPA 495, *Explosive Materials Code*.

†A-1-4 Flash Point. The following is extracted from NFPA 30, *Flammable and Combustible Liquids Code*.

The minimum temperature of a liquid at which sufficient vapor is given off to form an ignitable mixture with air, near the surface of the liquid or within the vessel used, as determined by the appropriate test procedure and apparatus as follows:

(a) The flash point of a liquid having a viscosity below 5.5 centiStokes at 40°C (104°F) or below 9.5 centiStokes at 25°C (77°F) shall be determined in accordance with ASTM D 56, *Standard Test Method for Flash Point by the Tag Closed Tester*.

Exception: Cut-back asphalts, liquids that tend to form a surface film, and liquids that contain suspended solids shall not be tested in accordance with ASTM D 56, even if they otherwise meet the viscosity criteria.

(b) The flash point of a liquid having a viscosity of 5.5 centiStokes or more at 40°C (104°F) or 9.5 centiStokes or more at 25°C (77°F) or a flash point of 93.4°C (200°F) or higher shall be determined in accordance with ASTM D 93, *Standard Test Methods for Flash Point by Pensky-Martens Closed Cup Tester*.

(c) As an alternative, ASTM D 3278, *Standard Method of Tests for Flash Point of Liquids by Setflash Closed Tester*, shall be permitted to be used for paints, enamels, lacquers, varnishes, and related products and their components that have flash points between 0°C (32°F) and 110°C (230°F) and viscosities below 150 Stokes at 25°C (77°F).

(d) As an alternative, ASTM D 3828, *Standard Test Methods for Flash Point by Small Scale Closed Tester*, shall be permitted to be used for materials other than those for which ASTM D 3278, *Standard Method of Tests for Flash Point of Liquids by Setflash Closed Tester*, is specifically required.

A-1-4 Industrial Occupancy. See NFPA 101, *Life Safety Code*, Chapter 28, for more information.

A-1-4 Laboratory Hood. For information on descriptions of types of laboratory hoods and exhaust ventilation devices, see ANSI/AIHA Z9.5, *Laboratory Ventilation*.

(a) **Conventional Hood.** A square post hood without an airfoil directional vane across the bottom of the hood face, in most cases without provision for a bypass. As the sash is lowered in hoods without an air bypass, the face velocity increases rapidly. The square post design and absence of a deflector vane has been known to create turbulence at the hood face.

Square-post hoods create turbulence at the hood face, which can bring fumes from the hood interior out to the hood face, where they are easily drawn out into the room by the air turbulence caused by a person working at the hood, persons passing the hood, or minor room cross drafts. If hoods are not

equipped with a bypass, face velocities might become objectionably high as the sash is closed and, with sash completely closed, airflow might be insufficient to carry vapors away.

(b) **Bypass Air Hood.** A hood having a bypass, protected by a grille, that serves to maintain a relatively constant volume of airflow regardless of sash position. Current design recommends a streamlined entry profile with a deflector vane across the bottom of the hood to direct the airflow across the work surface.

(c) **Auxiliary Air Hood.** Same as bypass air hood with the addition of an auxiliary air bonnet to provide a direct source of makeup air in addition to the makeup air from the laboratory work area.

(d) **Special Purpose Hoods.**

1. *Radioisotope Hoods.* Designed primarily for use with radiochemicals;

2. *Perchloric Acid Hoods.* Designed primarily for use with perchloric acid; and

3. *Walk-in Hoods.* Designed primarily for extra headroom to accommodate tall equipment.

A-1-4 Listed. The means for identifying listed equipment may vary for each organization concerned with product evaluation, some of which do not recognize equipment as listed unless it is also labeled. The authority having jurisdiction should utilize the system employed by the listing organization to identify a listed product.

A-1-4 Safety Can. See Section 1-2, "Safety Can," of NFPA 30, *Flammable and Combustible Liquids Code*.

A-1-4 Storage Cabinet. Some local jurisdictions require bottom-venting of flammable liquids storage cabinets. While this is not required by NFPA 30, *Flammable and Combustible Liquids Code*, some manufacturers provide plugged vent connections to accommodate these local jurisdictions.

A-1-4 Street Floor. For a more complete definition, see NFPA 101, *Life Safety Code*.

A-1-4 Unattended Laboratory Operation. Absence for lunch, telephone calls, etc., without coverage by a knowledgeable person constitutes an unattended laboratory operation.

A-2-2.1 The largest amounts of flammable and combustible liquids are permitted in Class A laboratory units and the least amounts in Class D laboratory units.

A-2-3.1(c) For sources of data on chemical reactivity hazard and hazardous chemical reactions, see the following NFPA documents:

NFPA 49, *Hazardous Chemicals Data*;

NFPA 325, *Guide to Fire Hazard Properties of Flammable Liquids, Gases, and Volatile Solids*; and

NFPA 491M, *Manual of Hazardous Chemical Reactions*.

A-3-1 The types of construction in Tables 3-1(a) and 3-1(b) are defined in NFPA 220, *Standard on Types of Building Construction*, and are reprinted in Section B-3 of this standard. Also, for a discussion of fire-resistive construction and fire endurance of building materials and construction assemblies, see the NFPA *Fire Protection Handbook*.

A-3-1.12 NFPA 90A, *Standard for the Installation of Air Conditioning and Ventilating Systems*, requires that approved fire dampers be provided in all air-transfer openings in partitions required to have a fire resistance rating. It requires that approved fire dampers be provided where ducts or air grilles penetrate partitions required to have a fire resistance rating of 2 hours or more. Thus, although any air-transfer opening would have to be fire dampered in required fire barrier of any rating, penetrations by ducts or air grilles would not have to be fire dampered if the required rating of the barrier is less than 2 hours.

A-3-4.1 A door to an adjoining laboratory work area or laboratory unit is considered to be a second means of access to an exit, provided that the laboratory unit is not of a higher fire hazard classification.

A-3-4.4 It should be noted that while sliding doors are permitted in certain Class C and Class D laboratory work areas, NFPA 101, *Life Safety Code*, and building codes place limitations on use based on number of occupants and area. Before sliding doors are used, both NFPA 101, *Life Safety Code*, and applicable local building codes should be reviewed for requirements and limitations.

A-3-5 Modern laboratory design concepts provide a wide selection of laboratory furniture and equipment. While such selections will be dictated by several factors, such as laboratory function, cost, serviceability, accessibility, repair, etc., any laboratory design should recognize and accommodate — to the extent practical — several needs directly related to improving the fire-safety posture of the laboratory work area.

Casework design should be flexible to provide optimum use of storage capacity without interfering with the normal needs of the laboratory. This can include desk areas that do not encourage underdesk storage, restraining techniques for items stored above eye level, ease of egress, provision for separation of incompatible chemicals or materials, provisions for ventilated or corrosion-resistant storage, or properly identified special facilities for unique waste storage needs, such as chemical, biological, or radioactive materials.

Easy access to laboratory utilities, such as piping, valves, and electrical switches and circuit breaker panels, should be provided. All valves and switches should be properly identified in accordance with the governing codes and standards.

Slip-resistant floor surfaces should be considered.

A-3-6.2 The requirement in 3-6.2 identifies laboratory units, laboratory work areas, and the interior of laboratory hoods as electrically unclassified areas. The ensuing discussion about the classification of laboratory hoods will support the classification of laboratory hoods as general purpose when the combination of the airflow rate and flammable vapor concentration will not permit flammable mixtures to form.

The effective ventilation of laboratory work areas where toxic or flammable chemicals are handled or stored is critical to safe operations for two important reasons.

First, to prevent personnel exposure to toxic or odiferous materials during the course of conducting normal laboratory activities, the resulting vapors or gases are usually exhausted with nonrecirculated conditioned air through hoods and local exhaust arrangements. This is one reason why it is very important to assure that laboratory ventilation systems are operating properly while activities are being carried out in the work area. Depending on the nature of the chemicals and the type of

operations, it might be possible to reduce ventilation rates during off-hours when work areas are unoccupied.

Second, when activities involve the use of toxic or flammable materials in quantities that cannot be safely handled in work areas, the activity should be done in a well-ventilated area or hood. Typical, modern hoods operate under negative pressure compared to the work area with hood face velocities that range from 0.41 m/sec to 0.61 m/sec (80 lfm to 120 lfm) with 0.5 m/sec (100 lfm) being the most common. These ventilation rates mix, dilute, and exhaust toxic or flammable materials to a safe location.

Many laboratory hoods contain a wide variety of electrical equipment ranging from vaporproof lighting, pumps, motors, heated surfaces, and electronic instruments. The electrical classification of the hoods is dependent on the ventilation rate, the quantity of flammable materials, and the type of chemical process or activity.¹ The challenge is to determine how flammable vapors or gases can be safely used in a hood with unclassified electrical equipment and heated surfaces.

When the quantity of flammable vapor is minimized and ventilation rates are maximized, a determination (as shown in Table A-3-6.2) of the volume of vapor generated by the vaporization of flammable liquid can help to approximate the maximum quantity of liquid that can be used to operate below the lower flammable limit (LFL). (Assumes liquid vaporizes instantaneously and mixes with air moving through the hood.) Under these ventilation rates and controlled quantities of flammable liquids, the hood is considered to be electrically unclassified since the LFL of the specific vapor will not be reached. Ventilation is assumed to be constant, and its failure simultaneously with an unexpected development of flammable vapors above the LFL is highly unlikely.

Before undertaking any laboratory activity involving toxic or flammable materials, a hazard assessment should be completed before proceeding. This is especially important when unfamiliar chemicals, apparatus, and reactions are used or when operating parameters are altered. Generally, because a laboratory hood is used to conduct various operations involving larger quantities of toxic or flammables compared to work done on the laboratory bench, the following items should be reviewed and considered before attempting to assemble apparatus in a hood:

(a) Determine minimum quantity of flammable or combustible liquids or flammable gases that are necessary to achieve the desired results considering the airflow capabilities of the hood.

(b) Identify possible ignition sources, including hot surfaces, electrical equipment, static charge, etc.

(c) If the activity is conducted when personnel are not in attendance, the equipment has to be designed to shut down in a fail-safe mode in the event of ventilation failure, fire, over-temperature, etc. Audible and visible alarms should also be installed.

(d) Switches that control power to equipment should be outside the hood and within 15 m (50 ft) so apparatus can be deenergized in an emergency.

¹Schram, P. J. and Earley, M. W., *Electrical Installations in Hazardous Locations*, NFPA, 1988.

(e) When performing a risk assessment, prepare a list of possible hazards and use engineering controls to reduce the probability of the event occurring.

(f) If the operation is designed for unattended use, a hood airflow monitor equipped with electrical contacts can be used to warn of defective hood performance and to provide a means to initiate an automatic safe shutdown of equipment.

(g) When flammable or combustible liquids are pressurized, arrange the equipment layout so that potential leaks from pump seals, piping components, glassware, etc. cannot occur near ignition sources. In some extra-hazardous operations, a partition between ignition sources and flammable and combustible liquid or flammable gas supplies might be required. If partitions are used, a smoke test of the airflow patterns should be conducted to assure good distribution across the hood opening.

(h) Provide spill containment to prevent spilled liquids from escaping from the hood.

(i) Use hoods with once-through flow that are equipped with a bypass airfoil or mechanical stops on the sash(es) that assure good ventilation rates even with the sash(es) in the closed position.

(j) Remove all flammable and combustible materials that are not being used.

(k) Prevent unauthorized use of operation of the hood.

(l) Minimize risk of accidental spill of liquids by using nonglass apparatus where possible.

(m) Keep hood sash(es) closed when operations do not require them to be open.

(n) Develop an emergency plan and develop off-hour instructions that can be followed during an emergency.

A-4-2.1 The automatic fire extinguishing system should be an automatic sprinkler system. If extinguishment or control can be more effectively accomplished by a nonwater automatic fire extinguishing system, it might be advisable to install such a system instead of automatic sprinklers.

A-4-2.1.2 See NFPA 25, *Standard for the Inspection, Testing, and Maintenance of Water-Based Fire Protection Systems*, for guidance.

A-4-2.3 It is suggested that automatic fire extinguishing systems activate both a local audible alarm and an audible or visible alarm at a constantly attended location.

A-4-3.1 All laboratory buildings should be provided with standpipes and 3.8-cm (1 1/2-in.) hose connections for use by trained occupants. Hose connections should be fitted with hose lines and combination straight stream-fog nozzles. Waterflow through the standpipe system should activate an audible fire alarm system on the premises.

A-4-3.2 For additional information, see NFPA 25, *Standard for the Inspection, Testing, and Maintenance of Water-Based Fire Protection Systems*.

A-4-6.2 Maintenance procedures should include inspection, testing, and maintenance of:

- (a) Utilities (steam, gas, electrical);
- (b) Air supply and exhaust systems;
- (c) Fire protection equipment;
- (d) Detectors and alarms;
- (e) Compressed gas regulators and pressure relief valves;

- (f) Waste disposal systems;
- (g) Fire doors;
- (h) Emergency lighting and exit signs; and
- (i) Electrically operated equipment.

A-4-6.3 Emergency Plan Components. An emergency response plan should be prepared and updated. The plan should be available for inspection by the authority having jurisdiction upon reasonable notice. The following information should be included in the emergency plan:

(a) The type of emergency equipment available and its location.

(b) A brief description of any testing or maintenance programs for the available emergency equipment.

(c) An indication that hazard identification marking is provided for each storage area.

(d) Location of posted emergency response procedures.

(e) Material safety data sheets (MSDS) for all gases stored on the site.

(f) A list of responsible personnel who are designated and trained to be liaison personnel for the fire department. These individuals should aid the emergency responders in pre-emergency planning; identifying where flammable, pyrophoric, oxidizing, and toxic gases are located; and accessing material safety data sheets and should be knowledgeable in the site emergency response procedures.

(g) A list of the types and quantities of compressed and liquefied gases normally at the facility.

A-4-6.3.1(e) Unusual nonfire hazards that emergency response personnel might encounter in responding to a fire in a chemical laboratory might include:

- (a) Poisons,
- (b) Corrosives,
- (c) Irritants,
- (d) Radioactivity,
- (e) Nonionizing radiation, or
- (f) Biological hazards.

Laboratory management should train emergency response personnel in detailed emergency response plans that address these special hazards.

Laboratory management should also encourage the public fire department to become familiar with these hazards through in-service inspections, joint emergency plan development, and coordinated emergency response drills.

Emergency telephones are of value when connected directly to an emergency office and when located within the laboratory building so that they can be readily used by laboratory personnel. They are also valuable when available at an exterior location for use by evacuees or passers-by. An emergency telephone system should be interconnected with a mass notification system, such as a public address system.

The management of each laboratory work area covered by this standard should be responsible for developing and distributing an evacuation plan for the facility. The plan should be written with accompanying diagrams and distributed to each supervisor and posted in appropriate locations for all employees to read and study. In addition to fires and explosions, the evacuation plan should also consider hazardous incidents such as spills, leaks, or releases of flammable, toxic, or radioactive materials, and acts of nature such as tornadoes, hurricanes, and floods. The evacuation plan should include, but not be limited to:

Table A-3-6.2 Properties of Commonly Used Flammable Liquid Loading in Laboratory Hoods

Solvent	Sp.Gr. (Water = 1.0)	Vapor Density (Air = 1.0)	Flash Point (°C) (°F)	Lower Flammable Limit (% by vol.)	Vapor Volume m ³ /L (ft ³ /gal)	Hood Exhaust at Indicated Flow Rate		Quantity of Liquid Vaporized to Reach LFL	
						0.472 m ³ / sec in air	(1000 ft ³ / min in air)	L	(gal)
						(% Vapor in air @ LFL)			
Acetone	0.8	2.0	-20 (-4)	2.5	0.33 (44.4)	70	(4.4)	2.2	(0.57)
Acetonitrile	0.8	1.4	5.5 (42)	3.0	0.48 (63.4)	100	(6.3)	1.8	(0.48)
Amyl Ether	0.8	5.5	57 (135)	2.3	0.12 (16.2)	26	(1.6)	5.5	(1.44)
Amyl Acetate	0.9	4.4	15.5 (60)	1.1	0.17 (22.2)	35	(2.2)	1.9	(0.50)
Aniline	1.1	3.2	70 (158)	1.3	0.29 (38.2)	60	(3.8)	1.3	(0.34)
Benzene	0.9	2.6	-11 (12)	1.2	0.27 (35.7)	57	(3.6)	1.2	(0.33)
Butyl Alcohol	0.8	2.5	37 (98)	1.4	0.26 (34.2)	54	(3.4)	1.6	(0.41)
Chlorobenzene	1.1	3.9	28 (82)	1.3	0.23 (31.3)	50	(3.1)	1.6	(0.42)
Cumene	0.9	4.1	35.5 (96)	0.9	0.18 (24.4)	39	(2.4)	1.4	(0.38)
Decane	0.7	4.9	46 (115)	0.8	0.12 (15.9)	25	(1.6)	1.9	(0.50)
Ethyl Alcohol	0.8	1.5	13 (55)	3.3	0.42 (55.5)	88	(5.5)	2.3	(0.60)
Ethyl Ether	0.7	2.5	-45 (-49)	1.9	0.22 (29.9)	47	(3.0)	2.4	(0.63)
Gasoline	0.8	3.4	-43 (-45)	1.4	0.19 (25.4)	40	(2.5)	2.1	(0.56)
Heptane	0.7	3.4	-4 (25)	1.1	0.17 (22.2)	35	(2.2)	1.9	(0.50)
Hexane	0.7	2.9	-22 (-7)	1.1	0.19 (25.9)	41	(2.6)	1.6	(0.42)
Methyl Alcohol	0.8	1.1	11 (52)	6.0	0.60 (80.7)	128	(8.1)	2.8	(0.74)
Methylcyclohexane	0.8	3.4	-4 (25)	1.2	0.20 (26.1)	41	(2.6)	1.7	(0.46)
Methylene Chloride	1.3	2.9	N/A (N/A)	13.0	0.37 (49.8)	79	(5.0)	9.8	(2.60)
Methyl Ethyl Ketone	0.8	2.4	-9 (16)	1.4	0.27 (35.5)	56	(3.5)	1.5	(0.40)
Pentane	0.6	2.5	-40 (-40)	1.5	0.20 (26.6)	42	(2.7)	2.1	(0.56)
Propyl Alcohol	0.8	2.0	23 (74)	2.2	0.32 (42.3)	67	(4.2)	2.0	(0.52)
Propylene Oxide	0.83	2.0	-37 (-35)	2.3	0.35 (46.1)	73	(4.6)	1.9	(0.50)
Propyl Ether	0.75	3.5	21 (70)	1.3	0.18 (23.8)	38	(2.4)	2.0	(0.54)
Pyridine	1.0	2.7	20 (68)	1.8	0.31 (41.1)	65	(4.1)	1.7	(0.44)
Tetrahydrofuran	0.9	2.4	-14 (6)	2.0	0.30 (39.9)	63	(4.0)	1.9	(0.50)
Toluene	0.9	3.1	4 (40)	1.1	0.24 (32.2)	51	(3.2)	1.3	(0.34)
M-xylene	0.9	3.6	27 (81)	1.1	0.20 (27.0)	43	(2.7)	1.6	(0.41)

¹Instantaneous flash condition @ LFL @ 28 m³/sec (@ 1000 cfm) airflow and rapid mixing.

²LFL = Lower Flammable Limit.

NOTE: The table illustrates the concentration that relates to the lower flammable limit (LFL). Operating conditions should not exceed 25 percent of LFL. See NFPA 69, *Standard on Explosion Prevention Systems*.

$$\text{Vapor Vol.} = \frac{8.33 \text{ lb/gal (H}_2\text{O)} \times \text{Sp.Gr. (solvent)}}{0.075 \text{ lb/ft}^3 \times \text{Vapor Density (relative to air)}}$$

$$\text{Vapor Vol.} = \frac{0.998 \text{ kg/L (H}_2\text{O)} \times \text{Sp.Gr. (solvent)}}{1.2 \text{ kg/m}^3 \times \text{Vapor Density (relative to air)}}$$

- (a) Conditions under which evacuation will be necessary.
- (b) Method of alarm transmission.
- (c) Action to be taken by personnel upon receiving an alarm in addition to evacuation (e.g., turn off flames and other ignition sources).
- (d) Primary and secondary routes to horizontal and vertical exits leading either to the exterior of the building or to safe refuge zones within the building as might be permitted if total evacuation is not necessary and the alarm system is appropriately zoned.
- (e) Instructions necessary to prevent evacuees from hampering fire-fighting operations or essential duties of emergency personnel (i.e., move away from the building to a pre-designated area).
- (f) Accountability to determine if everyone has left the facility. (Wardens or supervisors should be instructed to check all occupied spaces in their assigned area upon sounding of an alarm to ensure that everyone has heard the alarm and is evacuating. Personnel from particular groups, departments, floors, or areas should be instructed to gather in a pre-designated area outside the building or in a safe refuge zone. Special procedures should have to be established for evacuation of handicapped persons. Wardens or supervisors should be responsible for accounting for all personnel in their areas, including guests and visitors.)
- (g) Methods of notifying personnel when it is safe to reenter the facility. (Dependence on duly authorized persons, such as wardens, to pass this word will prevent someone from entering the facility prematurely.)

Laboratory management should conduct fire exit drills at least once a year to test the evacuation procedures by familiarizing personnel with exits, especially emergency exits not normally used, and their safe and efficient use. For required frequency of fire exit drills in educational occupancies and health care occupancies, see NFPA 101, *Life Safety Code*. (Fire exit drills differ from fire drills in that the latter are held for purposes of fire-fighting practice by the fire brigade or other emergency organizations. Since a conflict exists between evacuation and fire fighting, management should appoint different persons to be responsible for each procedure, as one cannot effectively direct fire-fighting operations and evacuation simultaneously.)

Fire alarm systems, where available, should be used in the conduct of fire exit drills. No one should be excused from participating in a fire exit drill.

A-4-6.3.2 Laboratory personnel should be thoroughly indoctrinated in procedures to follow in cases of clothing fires. The most important instruction, one that should be stressed until it becomes second nature to all personnel, is to immediately drop to the floor and roll. All personnel should recognize that, in case of ignition of another person's clothing, they should immediately knock that person to the floor and roll that person around to smother the flames. Too often a person will panic if clothing ignites and will run, resulting in more severe, often fatal, burn injuries.

Fire-retardant or flame-resistant clothing is one option available to help reduce the occurrence of clothing fires. Refer to NFPA 1975, *Standard on Station/Work Uniforms for Fire Fighters*, for performance requirements and test methods for fire-resistant clothing.

It should be emphasized that safety showers, fire blankets, or fire extinguishers are of secondary importance. They should be used only when immediately at hand. It should be recognized that rolling on the floor not only smothers the fire but also helps to keep flames out of the victim's face and reduces inhalation of smoke.

A-5-3(c) For further information on venting, see NFPA 68, *Guide for Venting of Deflagrations*.

A-5-5.2 A protective coating, such as mineral oil, can be applied to transparent sight panels exposed to corrosive vapors.

A-6-2.1 For additional information on laboratory ventilation, see ANSI/AIHA Z9.5, *Laboratory Ventilation*. For information on preventing the spread of smoke by means of utilizing supply and exhaust systems to create airflows and pressure differences between rooms or building areas, see NFPA 92A, *Recommended Practice for Smoke-Control Systems*.

A-6-2.2 Hoods having "explosionproof" electrical devices are sometimes referred to as "explosionproof hoods." This does not imply that they will contain an explosion; only that the electrical equipment will not provide a source of ignition.

A-6-3.1 Special studies such as air-dispersion modeling might be necessary to determine the location of air intakes for laboratories away from the influence of laboratory exhaust and other local point source emissions.

A-6-3.2 A minimum ventilation rate for unoccupied laboratories (e.g., nights and weekends) is for four room air changes per hour. Occupied laboratories typically operate at rates of greater than eight room air changes per hour consistent with the conditions of use for the laboratory.

A-6-3.4 Room air current velocities in the vicinity of fume hoods should be as low as possible, ideally less than 30 percent of the face velocity of the fume hood. Air supply diffusion devices should be as far away from fume hoods as possible, and have low exit velocities.

A-6-4.1 Ductless laboratory hoods that pass air from the hood interior through an absorption filter and then discharge the air into the laboratory are only applicable for use with nuisance vapors and dusts that do not present a fire or toxicity hazard.

A-6-4.2 The use of devices for energy conservation purposes should consider the potential contamination of the fresh air supply by exhaust air containing vapors of flammable or toxic chemicals.

A-6-4.4 Ducts should be sealed to prevent condensation, etc., from leaking into occupied areas.

A-6-4.5 Laboratory fume hood containment can be evaluated using the procedures contained in the ASHRAE 110, *Method of Testing Performance of Laboratory Fume Hoods*. Face velocities of 0.4 m/sec to 0.6 m/sec (80 fpm to 120 fpm) generally provide containment if the hood location requirements and laboratory ventilation criteria of this standard are met.

In addition to maintaining proper fume hood face velocity, fume hoods that reduce the exhaust volume as the sash opening is reduced should maintain a minimum exhaust volume to ensure that contaminants are diluted and exhausted from a hood. A minimum exhaust volume of 68 m³/sec (40 cfm) per linear meter (foot) of interior hood width generally ensures that contaminants are exhausted from a hood; however, some activities require higher volumes to ensure that flammable atmospheres will not occur in the hood.

A-6-4.10 Exhaust stacks should extend at least 3 m (10 ft) above the highest point on the roof to protect personnel on the roof. Exhaust stacks might need to be much higher to dissipate effluent effectively, and studies might be necessary to determine adequate design. Related information on stack height can be found in the ASHRAE *Handbook, Fundamentals Volume*, Chapter 14, "Airflow Around Buildings."

A-6-5.1 The exceptions cited are to recognize that some laboratory operations generate corrosive vapors that might attack available noncombustible duct material. Only when it has been ascertained that noncombustible ducts will not withstand such an attack by the chemicals to be exhausted should combustible ducts be used.

A-6-7.4 For further information, see Air Movement and Control Association (AMCA) Standard 99-0401-86, *Classifications for Spark Resistant Construction*, for informative material regarding spark-resistant fan construction.

A-6-7.6 Exhaust fans should be tested to ensure they do not rotate backward in new installations or after repair on motors.

A-6-8.1.2 Baffles normally should be adjusted for the best operating position for general use. Only where high heat loads or the routine use of large quantities of light or heavy gases occur should compensating adjustment be made. In most cases, however, the low concentrations of "heavier-than-air" and "lighter-than-air" vapors take on the characteristics of the large volumes of air going through the hood. It is recommended that the total adjustment not exceed 20 percent of the total airflow.

A-6-8.1.3 The means of containing minor spills might consist of a 6.4-mm ($\frac{1}{4}$ -in.) recess in the work surface, use of pans or trays, or creation of a recess by installing a curb across the front of the hood and sealing the joints between the work surface and the sides, back, and curb of the hood.

A-6-8.2 A hood sash greatly enhances the safety provided by a laboratory hood, and it is recommended that the hood design incorporate this feature. For example, a hood sash can be adjusted to increase the face velocity when working on high hazard material; the sash can be used as a safety shield, it can be closed to contain a fire or runaway reaction, and it can be closed to contain experiments when the hood is left unattended.

Hoods without sashes or hoods with a side or rear sash in addition to a front sash do not offer the same degree of protection as do hoods with protected single face openings, and, thus, their use is not recommended. A small face opening might be desirable to save exhaust air and energy or to increase the maximum face velocity on existing hoods.

A-6-8.4 Locating services, controls, and electrical fixtures external to the hood minimizes the potential hazards of corrosion and arcing.

A-6-9.1 A person walking past the hood might create sufficient turbulence to disrupt a face velocity of 0.5 m/sec (100 fpm). In addition, open windows or air impingement from an air diffuser might completely negate or dramatically reduce the face velocity and can also affect negative differential air pressure.

A-6-10.3 Exception. Where a gaseous fire extinguishing system is used, the protected hood should be provided with an independent duct system and a fan that is interlocked to shut down on actuation of the extinguishing system; or, the protected hood should be isolated by a damper actuated by the extinguishing system.

A-6-11.1 If perchloric acid is heated above ambient temperature, it will give off vapors that can condense and form explosive perchlorates. Limited quantities of perchloric acid vapor can be kept from condensing in laboratory exhaust systems by trapping or scrubbing the vapors at the point of origin. Scrubbing systems have been described in published articles.

A-6-11.6 Perchloric acid hoods should be washed down after each use.

A-6-11.8 A simple and sensitive test for perchlorates is available that uses a 0.4 percent solution of methylene blue in water. A few drops of the test solution in a small quantity [about 25 ml (0.84 oz)] of water washed from the duct to be tested will produce a violet precipitate if perchlorates are present. Approximately 12 mg (0.40 oz) of perchlorate in this volume 500 mg/L (17 oz/gal) can be recognized easily as a positive test.

An effective method for washing down ductwork suspected of perchlorate contamination has been recommended by Breyesse and published by Steere in the *Handbook of Laboratory Safety*. The method uses steaming of the ducts for 24 hours to condense water on all surfaces and dissolve and wash away perchlorate deposits. If tests after 24 hours show perchlorates in the final wash water, the steaming should be continued for another 24 hours until the test is negative.

A-6-12.1 Laboratory hoods in which radioactive materials are handled should be identified with the radiation hazard symbol. For information, see NFPA 801, *Standard for Facilities Handling Radioactive Materials*.

A-6-13.1 The operating characteristics of some laboratory hood designs, particularly auxiliary air laboratory hoods, change at intermediate positions of sash height. It is therefore important to verify inward airflow over the face of the hood according to 6-13.1(e) at several sash heights from full open to closed.

A number of test procedures for verifying performance of laboratory hoods that have been installed in the field have been published.

A test procedure is given in Scientific Equipment and Furniture Association (SEFA), *Standard on Laboratory Fume Hoods* (SEFA 1-1992), which uses a velometer and visible fume for checking hood performance. Copies of the standard are available from SEFA.

A standard, ASHRAE 110, has been issued by the American Society of Heating, Refrigerating, and Air Conditioning Engineers entitled *Method of Testing Performance of Laboratory Fume Hoods*. Copies of this standard are available from Manager of Standards, American Society of Heating, Refrigerating, and Air Conditioning Engineers, Inc.

The Environmental Protection Agency's *Standard Specification for Laboratory Fume Hoods* contains a test procedure utilizing sulfur hexafluoride as a test gas. This specification is available from the Environmental Protection Agency, Washington, DC 20460, Attn: Chief, Facilities Engineering and Real Property Branch (PM-215).

A-6-13.5.1 The annual inspection of air supply and exhaust fans, motors, and components should ensure that equipment is clean, dry, tight, and friction-free. Bearings should be properly lubricated on a regular basis, according to manufacturers' recommendations. Protective devices should be checked to ensure that settings are correct and that ratings have been tested under simulated overload conditions. Inspections should be made by personnel familiar with the manufacturers' instructions and equipped with proper instruments, gauges, and tools.

A-7-1 Before a hazardous chemical is ordered, controls should be established to assure that adequate facilities and procedures are available for receiving, storing, using, and disposing of the material. Information sources include:

NFPA 49, *Hazardous Chemicals Data*;

NFPA 325, *Guide to Fire Hazard Properties of Flammable Liquids, Gases, and Volatile Solids*; and

NFPA 491M, *Manual of Hazardous Chemical Reactions*.

A-7-2.2.1 The route used to transport hazardous materials between receiving rooms, storage rooms, dispensing rooms, and laboratory units of a facility should be appropriate to both the quantity and characteristics of the material being transported. Where possible, heavy or bulky quantities of hazardous materials should be transported by elevator, preferably one reserved exclusively for freight. In any event, the transport of hazardous materials in any quantity on an elevator should be accomplished by the minimum number of persons. All other persons should be excluded from an elevator while hazardous materials are present. Use of stairways for transport of small quantities of hazardous materials should be minimized.

A-7-2.2.2 Some common construction materials are subject to serious corrosion or formation of explosive compounds if used for or contacted by certain chemicals and gases commonly used in the laboratory. For example, copper tubing forms explosive compounds if it is used to pipe acetylene; azide salts are not compatible with copper or lead piping; mercury amalgamates in lead pipes.

Thermoplastic pipe used in chemical service, such as in laboratory waste drains, will frequently soften even when not directly attacked by chemical solvents. When this happens, much of the original strength and rigidity of the pipe is lost. If installed above ground or floor level, such piping should be provided with adequate rack support to prevent sagging. Burying plastic pipe used for chemical waste is not recommended because normal expansion might cause the pipe to collapse if the pipe has been softened by solvent attack.

A-7-2.2.6 Ventilation for transfer operations should be provided to prevent overexposure of personnel transferring flammable liquids. Control of solvent vapors is most effective if local exhaust ventilation is provided at or close to the point of transfer. Explosion venting is not required for separate inside liquid storage areas if containers are no greater than 227 L (60 gal) and if transfer from containers larger than 4 L (1.1 gal) is by means of approved pumps or other devices drawing through a top opening.

A-7-2.2.7 Where practicable, transfer operations should be separated from the storage of flammable and combustible liquids because of the exposure of greater quantities to the hazards of transfer operations.

A-7-2.2.8 The requirement permits the use of squeeze bottles in laboratories. Their use greatly reduces spills, while aiding in accurately dispensing liquids onto small components or surfaces. The small rate of intermittent discharge through the bottle's discharge tube has not been a hazard over many years of use.

In laboratory occupancies where pouring from and filling of laboratory size containers is performed within a laboratory fume hood or other similarly ventilated enclosure or space, ignition due to static discharge is not likely to occur. This might be attributed to a combination of factors such as: smaller size containers than used in industrial or commercial occupancies, low flow rates during manual pouring/filling, ventilation to below the lower flammable limits and the contact made between containers, as good laboratory technique dictates that liquids be poured down the side of the container or by use of a stirring rod, thus avoiding splashing or turbulence. Perhaps, of some yet to be determined significance, is the undefined charge transfer mech-

anism that can take place between nonconductive containers or between containers and the person performing the transfer. (For information on methods to reduce static electricity, see NFPA 77, *Recommended Practice on Static Electricity*.)

A-7-2.3 Flammable and combustible liquids that are not in use should be stored in safety cans, storage cabinets, or inside liquid storage areas. (See NFPA 30, *Flammable and Combustible Liquids Code*, for quantity limitations of storage cabinets and inside liquid storage areas.)

A-7-2.3.2 Class IA and IB flammable liquids in glass containers larger than the 500 ml (1 pt) and 1 L (1 qt) sizes permitted by Table 7-2 should be kept in containers of sufficient size to hold the contents of the glass containers.

The presence of flammable liquids in glass containers presents substantial hazards from accidental breakage. Many suppliers furnish glass containers with shatter-resistant coatings. These shatter-resistant glass containers offer significant protection from accidental breakage and are recommended for use when hazardous chemicals need to be kept in glass rather than plastic or metal containers.

A-7-2.3.4 For guidance, see NFPA 49, *Hazardous Chemicals Data*, and NFPA 491M, *Manual of Hazardous Chemical Reactions*.

A-7-2.3.5 There are several chemicals that can increase in hazard potential if subjected to long-term storage. Time alone can be only partially responsible, depending on the specific chemical. For example, exposure to air or light can cause the formation of highly shock- or friction-sensitive peroxides. Some hygroscopic or water-reactive compounds, such as metallic sodium, can autoignite on exposure to air or moisture. Another example is picric acid, which becomes highly shock-sensitive when its normal water content is allowed to evaporate. Reactive monomers that have been inhibited to reduce the chance of unintentional polymerization can become unstable when the inhibitor is consumed.

Such chemicals as described above, which can increase in hazard potential over time, are common to chemical laboratories and are routinely handled without incident. Still, the user should utilize appropriate reference material to adequately assess the often multiple hazards associated with the use of chemicals.

A-7-2.3.6 See NFPA 30, *Flammable and Combustible Liquids Code*, for performance-based requirements if storage cabinets are vented for any reason.

A-8-1.2 Cylinders of corrosive or unstable gases should be returned to the supplier when the expiration date of the maximum recommended retention period has been reached. Examples of such corrosive or unstable gases include:

- (a) Acid and alkaline gases;
- (b) Gases subject to autopolymerization; and
- (c) Gases subject to explosive decomposition.

Cylinders not in active use should be removed from laboratory work areas to a storage facility, as described in CGA Pamphlet P-1, *Safe Handling of Compressed Gases in Containers*. In the absence of a maximum recommended retention time, a 36-month interval should be used.

A-8-1.3 Such vessels shall not be used in commerce unless DOT approved.

A-8-2.1 For additional information see the following:

CGA Pamphlet P-1, *Safe Handling of Compressed Gases in Containers*;

ANSI B31.1, *Power Piping* (including Addendas a through d);

ANSI B31.3, *Chemical Plant and Petroleum Refinery Piping*; and National Safety Council Data Sheet 1-688-86, *Cryogenic Fluids in the Laboratory*.

A-8-2.3 Additional shutoff valves, located in accessible locations outside of the areas in which the gases are used, are acceptable.

A-8-2.5 It is recommended that each intermediate regulator and valve also be identified. The identification should conform to ANSI A13.1, *Scheme for the Identification of Piping Systems*.

A-8-2.6 Exception. Great care should be taken when converting a piping system from one gas to another. In addition to the requirements of 8-2.6, thorough cleaning to remove residues might be essential. For example, inert oil-pumped nitrogen will leave a combustible organic residue that is incompatible with oxygen and other oxidizing agents. Similar incompatibilities can occur with other materials.

A-8-4.1.1 Air can be condensed when it contacts containers or piping containing cryogenic fluids. When this occurs, the concentration of oxygen in the condensed air increases, thereby increasing the likelihood of ignition of organic material.

A-9-1.1.1 Reference sources are NFPA 49, *Hazardous Chemicals Data*; NFPA 325, *Guide to Fire Hazard Properties of Flammable Liquids, Gases, and Volatile Solids*; and NFPA 491M, *Manual of Hazardous Chemical Reactions*.

A-9-1.1.3 When a new chemical is produced, it should be subjected to a hazard analysis as appropriate to the reasonably anticipated hazard characteristics of the material. Such tests might include, but are not limited to, differential thermal analysis, accelerating rate calorimetry, drop weight shock sensitivity, autoignition temperature, flash point, thermal stability under confinement, heat of combustion, and other appropriate tests.

A-9-1.4 Protection against ignition sources associated with typical laboratory apparatus can be achieved by distance, pressurization of motor or switch housings, or inerting techniques that can effectively prevent flammable vapor concentrations from contacting ignition sources. (See NFPA 496, *Standard for Purged and Pressurized Enclosures for Electrical Equipment*, for requirements for purge systems for electrical enclosures, and NFPA 69, *Standard on Explosion Prevention Systems*, for requirements for inerting systems.)

A-9-1.6.3 Procedures might include chilling, quenching, cut-off of reactant supply, venting, dumping, and “short-stopping” or inhibiting.

A-9-2.2.2 The use of domestic refrigerators for the storage of typical laboratory solvents presents a significant hazard to the laboratory work area. Refrigerator temperatures are almost universally higher than the flash points of the flammable liquids most often stored in them. In addition to vapor accumulation, a domestic refrigerator contains readily available ignition sources, such as thermostats, light switches, and heater strips, all within or exposed to the refrigerated storage compartment. Furthermore, the compressor and its circuits are typically located at the bottom of the unit, where vapors from flammable liquid spills or leaks could easily accumulate.

Protection against the ignition of flammable vapors in refrigerated equipment is available through three types of laboratory refrigerators: “explosionproof,” “laboratory-safe” (or “explosion-safe”), and modified domestic models.

“Explosionproof” refrigeration equipment is designed to protect against ignition of flammable vapors both inside and

outside the refrigerated storage compartment. This type is intended and recommended for environments such as pilot plants or laboratory work areas where all electrical equipment is required to meet the requirements of Article 501 of NFPA 70, *National Electrical Code*.

The design concepts of the “explosion-safe” or “laboratory-safe” type of refrigerator are based on the typical laboratory environment. The primary intent is to eliminate ignition of vapors inside the storage compartment by sources also within the compartment. In addition, commercially available “laboratory-safe” refrigerators incorporate such design features as thresholds, self-closing doors, friction latches or magnetic door gaskets, and special materials for the inner shell. All of these features are intended to control or limit the damage should an exothermic reaction occur within the storage compartment. Finally, the compressor and its circuits and controls are located at the top of the unit to further reduce the potential for ignition of floor-level vapors. In general, the design features of a commercially available “laboratory-safe” refrigerator are such that they provide important safeguards not easily available through modification of domestic models.

Although not considered optimum protection, it is possible to modify domestic refrigerators to achieve some degree of protection. However, the modification process can be applied only to manual defrost refrigerators; the self-defrosting models cannot be successfully modified to provide even minimum safeguards against vapor ignition. The minimum procedures for modification include:

- Relocation of manual temperature controls to the exterior of the storage compartment, sealing all points where capillary tubing or wiring formerly entered the storage compartment;
- Removal of light switches and light assemblies and sealing of all resulting openings; and
- Replacement of positive mechanical door latches with magnetic door gaskets.

Regardless of the approach used (“explosionproof,” “laboratory-safe,” modified domestic, or unmodified domestic), every laboratory refrigerator should be clearly marked to indicate whether or not it is safe for storage of flammable materials. Internal laboratory procedures should ensure that laboratory refrigerators are being properly used. Figure A-9-2.2.2 gives examples of labels that can be used on laboratory refrigerators.

Do not store flammable solvents
in this refrigerator

Label used for unmodified domestic models.

Notice: This is not an explosionproof refrigerator, but it has been designed to permit safe storage of materials producing flammable vapors. Containers should be well-stoppered or tightly closed.

Label for laboratory-safe or modified domestic models.

Figure A-9-2.2.2 Labels to be used in laboratory refrigerators.

A-9-2.3.5 The requirements of 9-2.3.5 can be accomplished by:

- Limiting the temperatures of internal heated surfaces that can be exposed to the vapors to no more than 80 percent of the autoignition temperature of the material being heated; or

(b) Providing mechanical exhaust ventilation discharging to a safe location to keep the concentration of flammable gas or vapor below 25 percent of the lower flammable limit. The ventilation equipment should be interlocked with the heating system so that heating cannot take place unless the ventilation system is operating.

Also, any electrical equipment located within the outer shell, within the compartment, on the door, or on the door frame should be suitable for Class I, Division 1 hazardous (classified) locations and any electrical equipment mounted on the outside of the equipment should be:

(a) Suitable for Class I, Division 2 hazardous (classified) locations; or

(b) Installed on the outside surface of the equipment where exposure to vapors will be minimal.

Consideration should also be given to providing deflagration venting as described in NFPA 86, *Standard for Ovens and Furnaces*.

A-9-2.6.1 For design of pressure vessels, see the ASME *Boiler and Pressure Vessel Code*, Section VIII, "Rules for Construction of Pressure Vessels," Division 1.

A-10-1 Examples of severe or unusual hazards that might require posting of signs include:

- (a) Unstable chemicals;
- (b) Radioactive chemicals;
- (c) Carcinogens, mutagens, and teratogens;
- (d) Pathogens;
- (e) High pressure reactions;
- (f) High powered lasers;
- (g) Water reactive materials; and
- (h) Cryogenics.

Also, the names and home telephone numbers of one or more persons working in each laboratory work area should be posted at the entrance to that work area. Such information should be kept current.

It is important to recognize that an extremely toxic substance need not be identified as a proportionately hazardous substance. The quantity of the substance, the ease of penetration of its container or risk of its release by fire, and the probability of harming emergency response personnel are the true measures of the hazard level. This standard does not exclusively endorse any particular convention for communicating unusual hazards to emergency response personnel, recognizing that professional judgments need to be made on a facility by facility basis. These judgments should recognize several existing conventions.

Use of the NFPA 704 system (*Standard System for the Identification of the Hazards of Materials for Emergency Response*), which might be suitable for flammable liquid storage cabinets or those laboratories containing a nearly constant chemical inventory, is not recommended for multichemical laboratories where the chemicals can change frequently. Such laboratories can include any of the following: analytical, biological (public health, genetic engineering, bacteriological), physical and chemical (organic, inorganic, physical, research, crystallographic, forensic), instructional (college and high school chemistry and physics laboratories), metallurgical, mineralogical, fine art restoration and identification, and dental. Even where storage within a laboratory involves unusually high amounts of flammable or toxic or reactive materials (and hence calls for hazard identification), a lettered sign is generally more easily understandable than a

numerical designation. Hence the NFPA 704 system is not recommended for laboratories in general.

A-10-2 The exhaust system should be identified "WARNING — Chemical Laboratory Exhaust" (or "Laboratory Hood Exhaust" or other appropriate wording). Exhaust system discharge stacks and discharge vents and exhaust system fans should be marked to identify the laboratories or work areas being served.

Appendix B Supplementary Definitions

The following definitions are extracted from other NFPA documents and are critical to the understanding of this standard and thus are considered a part of the requirements of this document.

B-1 NFPA 30 Definitions. The following definitions are extracted from NFPA 30, *Flammable and Combustible Liquids Code*.

†B-1.1 Flammable Liquid. Any liquid that has a closed-cup flash point below 37.8°C (100°F), as determined by the test procedures and apparatus set forth in 1-7.4 [of NFPA 30]. Flammable liquids shall be classified as Class I as follows:

(a) *Class I Liquid.* Any liquid that has a closed-cup flash point below 37.8°C (100°F) and a Reid vapor pressure not exceeding 2068.6 mm Hg (40 psia) at 37.8°C (100°F), as determined by ASTM D 323, *Standard Method of Test for Vapor Pressure of Petroleum Products (Reid Method)*. Class I liquids shall be further classified as follows:

1. Class IA liquids shall include those liquids that have flash points below 22.8°C (73°F) and boiling points below 37.8°C (100°F).

2. Class IB liquids shall include those liquids that have flash points below 22.8°C (73°F) and boiling points at or above 37.8°C (100°F).

3. Class IC liquids shall include those liquids that have flash points at or above 22.8°C (73°F), but below 37.8°C (100°F).

†B-1.2 Combustible Liquid. A combustible liquid shall be defined as any liquid that has a closed-cup flash point at or above 37.8°C (100°F), as determined by the test procedures and apparatus set forth in 1-7.4 [of NFPA 30]. Combustible liquids shall be classified as Class II or Class III as follows:

(a) *Class II Liquid.* Any liquid that has a flash point at or above 37.8°C (100°F) and below 60°C (140°F).

(b) *Class IIIA.* Any liquid that has a flash point at or above 60°C (140°F), but below 93°C (200°F).

(c) *Class IIIB.* Any liquid that has a flash point at or above 93°C (200°F).

B-2 NFPA 704 Definitions. The following definitions are extracted from NFPA 704, *Standard System for the Identification of the Hazards of Materials for Emergency Response*.

†B-2.1 Health Hazard. The likelihood of a material to cause, either directly or indirectly, temporary or permanent injury or incapacitation due to an acute exposure by contact, inhalation, or ingestion.

†B-2.2 Degrees of Hazard. The degrees of health hazard shall be ranked according to the probable severity of the effects of exposure to emergency response personnel. For each degree of hazard the criteria are listed in a priority order based upon the likelihood of exposure. Data from all routes of

exposure shall be considered when applying professional judgment to assign a health hazard rating.

4 Materials that, under emergency conditions, can be lethal. The following criteria shall be considered when rating materials:

Gases whose LC_{50} for acute inhalation toxicity is less than or equal to 1000 parts per million (ppm);

Any liquid whose saturated vapor concentration at 20°C (68°F) is equal to or greater than 10 times its LC_{50} for acute inhalation toxicity, if its LC_{50} is less than or equal to 1000 parts per million (ppm);

Dusts and mists whose LC_{50} for acute inhalation toxicity is less than or equal to 0.5 milligrams per liter (mg/L);

Materials whose LD_{50} for acute dermal toxicity is less than or equal to 40 milligrams per kilogram (mg/kg);

Materials whose LD_{50} for acute oral toxicity is less than or equal to 5 milligrams per kilogram (mg/kg).

3 Materials that, under emergency conditions, can cause serious or permanent injury. The following criteria shall be considered when rating materials:

Gases whose LC_{50} for acute inhalation toxicity is greater than 1000 parts per million (ppm), but less than or equal to 3000 parts per million (ppm);

Any liquid whose saturated vapor concentration at 20°C (68°F) is equal to or greater than its LC_{50} for acute inhalation toxicity, if its LC_{50} is less than or equal to 3000 parts per million (ppm), and that does not meet the criteria for degree of hazard 4;

Dusts and mist whose LC_{50} for acute inhalation toxicity is greater than 0.5 milligrams per liter (mg/L), but less than or equal to 2 milligrams per liter (mg/L);

Materials whose LD_{50} for acute dermal toxicity is greater than 40 milligrams per kilogram (mg/kg), but less than or equal to 200 milligrams per kilogram (mg/kg);

Materials that are corrosive to the respiratory tract;

Materials that are corrosive to the eye or cause irreversible corneal opacity;

Materials that are severely irritating and/or corrosive to skin;

Materials whose LD_{50} for acute oral toxicity is greater than 5 milligrams per kilogram (mg/kg), but less than or equal to 50 milligrams per kilogram (mg/kg).

2 Materials that, under emergency conditions, can cause temporary incapacitation or residual injury. The following criteria shall be considered when rating materials:

Gases whose LC_{50} for acute inhalation toxicity is greater than 3000 parts per million (ppm), but less than or equal to 5000 parts per million (ppm);

Any liquid whose saturated vapor concentration at 20°C (68°F) is equal to or greater than one-fifth ($1/5$) its LC_{50} for acute inhalation toxicity, if its LC_{50} is less than or equal to 5000 parts per million (ppm), and that does not meet the criteria for either degree of hazard 3 or degree of hazard 4;

Dusts and mists whose LC_{50} for acute inhalation toxicity is greater than 2 milligrams per liter (mg/L), but less than or equal to 10 milligrams per liter (mg/L);

Materials whose LD_{50} for acute dermal toxicity is greater than 200 milligrams per kilogram (mg/kg), but less than or equal to 1000 milligrams per kilogram (mg/kg);

Materials that are respiratory irritants;

Materials that cause irritating but reversible injury to the eyes;

Materials that are primary skin irritants or sensitizers;

Materials whose LD_{50} for acute oral toxicity is greater than 50 milligrams per kilogram, but less than or equal to 500 milligrams per kilogram (mg/kg).

1 Materials that, under emergency conditions, can cause significant irritation. The following criteria shall be considered when rating materials:

Gases and vapors whose LC_{50} for acute inhalation toxicity is greater than 5000 parts per million (ppm), but less than or equal to 10,000 parts per million (ppm);

Dusts and mists whose LC_{50} for acute inhalation toxicity is greater than 10 milligrams per liter (mg/L), but less than or equal to 200 milligrams per liter (mg/L);

Materials whose LD_{50} for acute dermal toxicity is greater than 1000 milligrams per kilogram (mg/kg), but less than or equal to 2000 milligrams per kilogram (mg/kg);

Materials that are slightly irritating to the respiratory tract, eyes, and skin;

Materials whose LD_{50} for acute oral toxicity is greater than 500 milligrams per kilogram (mg/kg), but less than or equal to 2000 milligrams per kilogram (mg/kg).

0 Materials that, under emergency conditions, would offer no hazard beyond that of ordinary combustible materials. The following criteria shall be considered when rating materials:

Gases and vapors whose LC_{50} for acute inhalation toxicity is greater than 10,000 parts per million (ppm);

Dusts and mists whose LC_{50} for acute inhalation toxicity is greater than 200 milligrams per liter (mg/L);

Materials whose LD_{50} for acute dermal toxicity is greater than 2000 milligrams per kilogram (mg/kg);

Materials whose LD_{50} for acute oral toxicity is greater than 2000 milligrams per kilogram (mg/kg);

Essentially nonirritating to the respiratory tract, eyes, and skin.

†B-2.3 Flammability Hazards. This chapter shall address the degree of susceptibility of materials to burning. Since many materials will burn under one set of conditions but will not burn under others, the form or condition of the material shall be considered, along with its inherent properties. The definitions for liquid classification are found in NFPA 30, *Flammable and Combustible Liquids Code*.

†B-2.4 Degrees of Hazard. The degrees of hazard shall be ranked according to the susceptibility of materials to burning as follows:

- 4** Materials that will rapidly or completely vaporize at atmospheric pressure and normal ambient temperature or that are readily dispersed in air, and which will burn readily. This includes:
 - Flammable gases;
 - Flammable cryogenic materials;
 - Any liquid or gaseous material that is liquid while under pressure and has a flash point below 22.8°C (73°F) and a boiling point below 37.8°C (100°F) (i.e., Class IA liquids);
 - Materials that ignite spontaneously when exposed to air.
- 3** Liquids and solids that can be ignited under almost all ambient temperature conditions. Materials in this degree produce hazardous atmospheres with air under almost all ambient temperatures or, though unaffected by ambient temperatures, are readily ignited under almost all conditions. This includes:
 - Liquids having a flash point below 22.8°C (73°F) and having a boiling point at or above 37.8°C (100°F) and those liquids having a flash point at or above 22.8°C (73°F) and below 37.8°C (100°F) (i.e., Class IB and Class IC liquids);
 - Materials that on account of their physical form or environmental conditions can form explosive mixtures with air and that are readily dispersed in air;
 - Materials that burn with extreme rapidity, usually by reason of self-contained oxygen (e.g., dry nitrocellulose and many organic peroxides).
- 2** Materials that must be moderately heated or exposed to relatively high ambient temperatures before ignition can occur. Materials in this degree would not under normal conditions form hazardous atmospheres with air, but under high ambient temperatures or under moderate heating might release vapor in sufficient quantities to produce hazardous atmospheres with air. This includes:
 - Liquids having a flash point at or above 37.8°C (100°F) and below 93.4°C (200°F) (i.e., Class II and Class IIIA liquids);
 - Solid materials in the form of coarse dusts that burn rapidly but that generally do not form explosive atmospheres with air;
 - Solid materials in a fibrous or shredded form that burn rapidly and create flash fire hazards, such as cotton, sisal, and hemp;
 - Solids and semisolids that readily give off flammable vapors.

1 Materials that must be preheated before ignition can occur. Materials in this degree require considerable preheating, under all ambient temperature conditions, before ignition and combustion can occur. This includes:

Materials that will burn in air when exposed to a temperature of 815.5°C (1500°F) for a period of 5 minutes or less;

Liquids, solids, and semisolids having a flash point at or above 93.4°C (200°F) (i.e., Class IIIB liquids);

Liquids with a flash point greater than 35°C (95°F) that do not sustain combustion when tested using the *Method of Testing for Sustained Combustibility*, per 49 CFR, Part 173, Appendix H, or the *UN Recommendations on the Transport of Dangerous Goods*, 8th Revised Edition.

Liquids with a flash point greater than 35°C (95°F) in a water-miscible solution or dispersion with a water non-combustible liquid/solid content of more than 85 percent by weight.

Liquids that have no fire point when tested by ASTM D 92, *Standard Test Method for Flash Point and Fire Point by Cleveland Open Cup*, up to the boiling point of the liquid or up to a temperature at which the sample being tested shows an obvious physical change.

Most ordinary combustible materials.

0 Materials that will not burn. This includes any material that will not burn in air when exposed to a temperature of 815.5°C (1500°F) for a period of 5 minutes.

†B-2.5 Reactivity (Instability) Hazards.

†B-2.5.1 This chapter shall address the degree of susceptibility of materials to release energy. Some materials are capable of rapid release of energy by themselves, through self-reaction or polymerization, or can undergo violent explosive reaction through contact with water or other extinguishing agents or with certain other materials.

†B-2.5.2 The violence of a reaction or decomposition of materials can be increased by heat or pressure, or by mixture with certain other materials to form fuel-oxidizer combinations, or by contact with incompatible substances, sensitizing contaminants, or catalysts.

†B-2.5.3 Because of the wide variations of accidental combinations possible in fire or other emergencies, these extraneous hazard factors (except for the effect of water) cannot be applied to a general numerical rating of hazards. Such extraneous factors must be considered individually in order to establish appropriate safety factors, such as separation or segregation. Such individual consideration is particularly important where significant amounts of materials are to be stored or handled. Guidance for this consideration is provided in NFPA 49, *Hazardous Chemicals Data*.

†B-2.5.4 The degree of instability hazard shall indicate to fire-fighting and emergency personnel whether the area shall be evacuated, whether a fire shall be fought from a protected location, whether caution shall be used in approaching a spill or fire to apply extinguishing agents, or whether a fire can be fought using normal procedures.

B-2.5.5 Definitions.

†B-2.5.5.1 For the purposes of this standard, an unstable material is one that can enter into a violent chemical reaction with water. Reactions with other materials can also result in violent release of energy but are beyond the scope of this standard.

B-2.5.5.2 For the purposes of this standard, an unstable material is one that, in the pure state or as commercially produced,

will vigorously polymerize, decompose or condense, become self-reactive, or otherwise undergo a violent chemical change under conditions of shock, pressure, or temperature.

†B-2.5.5.3 Stable materials are those that normally have the capacity to resist changes in their chemical composition, despite exposure to air, water, and heat as encountered in fire emergencies.

†B-2.6 Degrees of Hazard. The degrees of hazard shall be ranked according to ease, rate, and quantity of energy release as follows:

4 Materials that in themselves are readily capable of detonation or explosive decomposition or explosive reaction at normal temperatures and pressures. This includes materials that are sensitive to localized thermal or mechanical shock at normal temperatures and pressures.

Materials that have an instantaneous power density (product of heat of reaction and reaction rate) at 250°C (482°F) of 1000 W/mL or greater.

3 Materials that in themselves are capable of detonation or explosive decomposition or explosive reaction, but that require a strong initiating source or that must be heated under confinement before initiation. This includes:

Materials that have an instantaneous power density (product of heat of reaction and reaction rate) at 250°C (482°F) at or above 100 W/mL and below 1000 W/mL;

Materials that are sensitive to thermal or mechanical shock at elevated temperatures and pressures;

Materials that react explosively with water without requiring heat or confinement.

2 Materials that readily undergo violent chemical change at elevated temperatures and pressures. This includes:

Materials that have an instantaneous power density (product of heat of reaction and reaction rate) at 250°C (482°F) at or above 10 W/mL and below 100 W/mL;

Materials that react violently with water or form potentially explosive mixtures with water.

1 Materials that in themselves are normally stable, but that can become unstable at elevated temperatures and pressures. This includes:

Materials that have an instantaneous power density (product of heat of reaction and reaction rate) at 250°C (482°F) at or above 0.01 W/mL and below 10 W/mL;

Materials that react vigorously with water, but not violently;

Materials that change or decompose on exposure to air, light, or moisture.

0 Materials that in themselves are normally stable, even under fire conditions. This includes:

Materials that have an instantaneous power density (product of heat of reaction and reaction rate) at 250°C (482°F) below 0.01 W/mL;

Materials that do not react with water;

Materials that do not exhibit an exotherm at temperature less than or equal to 500°C (932°F) when tested by differential scanning calorimetry.

B-3 NFPA 220 Definitions. The following definitions are extracted from NFPA 220, *Standard on Types of Building Construction*:

†B-3.1 Noncombustible Material. A material that, in the form in which it is used and under the conditions anticipated, does not ignite, burn, support combustion, or release flammable vapors, when subjected to fire or heat. Materials that are

reported as passing ASTM E 136, *Standard Test Method for Behavior of Materials in a Vertical Tube Furnace at 750 Degrees C*, shall be considered noncombustible materials.

†B-3.2 Limited-Combustible. A building construction material not complying with the definition of noncombustible material that, in the form in which it is used, has a potential heat value not exceeding 3500 Btu/lb (8141 kJ/kg), where tested in accordance with NFPA 259, *Standard Test Method for Potential Heat of Building Materials*, and complies with (a) or (b) below. Materials subject to increase in combustibility or flame spread index beyond the limits herein established through the effects of age, moisture, or other atmospheric condition shall be considered combustible.

(a) Materials having a structural base of noncombustible material, with a surfacing not exceeding a thickness of $\frac{1}{8}$ in. (3.2 mm) that has a flame spread index not greater than 50.

(b) Materials, in the form and thickness used, other than as described in (a), having neither a flame spread index greater than 25 nor evidence of continued progressive combustion and of such composition that surfaces that would be exposed by cutting through the material on any plane would have neither a flame spread index greater than 25 nor evidence of continued progressive combustion.

†B-3.3 Flame Spread Index. A number obtained according to NFPA 255, *Standard Method of Test of Surface Burning Characteristics of Building Materials*.

B-3.4 Guide to Classification of Types of Building Construction.

†B-3.4.1 The types of construction include five basic types designated by Roman numerals as Type I, Type II, Type III, Type IV, and Type V. This system of designating types of construction also includes a specific breakdown of the types of construction through the use of Arabic numbers. These numbers follow the Roman numeral notation where identifying a type of construction (e.g., Type I-443, Type II-111, Type III-200).

The Arabic numbers following each basic type of construction (e.g., Type I, Type II) indicate the fire resistance rating requirements for certain structural elements as follows:

(a) *First Arabic Number:* Exterior bearing walls.

(b) *Second Arabic Number:* Columns, beams, girders, trusses and arches, supporting bearing walls, columns, or loads from more than one floor.

(c) *Third Arabic Number:* Floor construction.

Specific fire resistance requirements are found in Table B-3.4.2.

B-3.4.2 Basic Construction Types.

NOTE: All dimensions for sawn and laminated lumber are nominal.

†Type I (443 or 332). Type I construction shall be that type in which the structural members, including walls, columns, beams, girders, trusses, arches, floors, and roofs, are of approved noncombustible or limited-combustible materials and shall have fire resistance ratings not less than those specified in Table B-3.4.2.

†Type II (222, 111, or 000). Type II construction shall be that type not qualifying as Type I construction in which the structural members, including walls, columns, beams, girders, trusses, arches, floors, and roofs, are of approved noncombustible or limited-combustible materials and shall have fire resistance ratings not less than those specified in Table B-3.4.2.

†Type III (211 or 200). Type III construction shall be that type in which exterior walls and structural members that are portions of

exterior walls are of approved noncombustible or limited-combustible materials, and interior structural members, including walls, columns, beams, girders, trusses, arches, floors, and roofs, are entirely or partially of wood of smaller dimensions than required for Type IV construction or of approved noncombustible, limited-combustible, or other approved combustible materials. In addition, structural members shall have fire resistance ratings not less than those specified in Table B-3.4.2.

†**Type IV (2HH).** Type IV construction shall be that type in which exterior and interior walls and structural members that are portions of such walls are of approved noncombustible or limited-combustible materials. Other interior structural members, including columns, beams, girders, trusses, arches, floors, and roofs, shall be of solid or laminated wood without concealed spaces and shall comply with the provisions of (a) through (e) below. In addition, structural members shall have fire resistance ratings not less than those specified in Table B-3.4.2.

Exception No. 1: Interior columns, arches, beams, girders, and trusses of approved materials other than wood shall be permitted, provided they are protected to provide a fire resistance rating of not less than 1 hour.

Exception No. 2: Certain concealed spaces shall be permitted by the exception to (c) below.

(a) Wood columns supporting floor loads shall be not less than 203 mm (8 in.) in any dimension; wood columns supporting roof loads only shall be not less than 152 mm (6 in.) in the smallest dimension and not less than 203 mm (8 in.) in depth.

(b) Wood beams and girders supporting floor loads shall be not less than 152 mm (6 in.) in width and not less than 254 mm (10 in.) in depth; wood beams and girders and other roof framing, supporting roof loads only, shall be not less than 102 mm (4 in.) in width and not less than 152 mm (6 in.) in depth.

(c) Framed or glued laminated arches that spring from grade or the floor line and timber trusses that support floor loads shall be not less than 203 mm (8 in.) in width or depth. Framed or glued laminated arches for roof construction that spring from grade or the floor line and do not support floor loads shall have members not less than 152 mm (6 in.) in width and not less than 203 mm (8 in.) in depth for the lower half of the member height and not less than 152 mm (6 in.) in depth for the upper half of the member height. Framed or glued laminated arches for roof construction that spring from the top of walls or wall abutments and timber trusses that do not support floor loads shall have members not less than 102 mm (4 in.) in width and not less than 152 mm (6 in.) in depth.

Exception: Spaced members shall be permitted to be composed of two or more pieces not less than 76 mm (3 in.) in thickness where blocked solidly throughout their intervening spaces or where such spaces are tightly closed by a continuous wood cover plate not less than 51 mm (2 in.) in thickness, secured to the underside of the members.

Splice plates shall be not less than 76 mm (3 in.) in thickness.

(d) Floors shall be constructed of splined or tongued and grooved plank not less than 76 mm (3 in.) in thickness that is covered with 25-mm (1-in.) tongue and groove flooring, laid crosswise or diagonally to the plank, or with 13-mm (1/2-in.) plywood; or they shall be constructed of laminated planks not less than 102 mm (4 in.) in width, set close together on edge, spiked at intervals of 457 mm (18 in.), and covered with 25-mm (1-in.) tongue and groove flooring, laid crosswise or diagonally to the plank, or with 13-mm (1/2-in.) plywood.

(e) Roof decks shall be constructed of splined or tongued and grooved plank not less than 51 mm (2 in.) in thickness; or of laminated planks not less than 76 mm (3 in.) in width,

set close together on edge, and laid as required for floors; or of 28.6-mm (1 1/8-in.) thick interior plywood (exterior glue); or of approved noncombustible or limited-combustible materials of equivalent fire durability.

†**Type V (111 or 000).** Type V construction shall be that type in which exterior walls, bearing walls, columns, beams, girders, trusses, arches, floors, and roofs are entirely or partially of wood or other approved combustible material smaller than material required for Type IV construction. In addition, structural members shall have fire resistance ratings not less than those specified in †Table B-3.4.2.

Appendix C Supplementary Information on Explosion Hazards and Protection

This Appendix is not a part of the requirements of this NFPA document but is included for informational purposes only.

C-1 Scope. This appendix is intended to provide laboratory management with information to assist them in understanding the potential consequences of an explosion and the need for adequately designed protection. It is not intended to be a design manual.

C-2 Explosion. An explosion is (1) a violent bursting, as of a pressurized vessel; or (2) an extremely rapid chemical reaction with the associated production of noise, heat, and violent expansion of gases. Reactive explosions are further categorized as deflagrations, detonations, and thermal explosions.

C-2.1 Container Failure. When a container is pressurized beyond its burst strength, it can violently tear asunder (explode). A container failure can produce subsonic, sonic, or supersonic shock waves, depending on the cause of the internal pressure.

C-2.1.1 The energy released by failure of a vessel containing a gas or liquid is the sum of the energy of pressurization of the fluid and the strain energy in the vessel walls due to pressure-induced deformation.

C-2.1.2 In pressurized gas systems, the energy in the compressed gas represents a large proportion of the total energy released in a vessel rupture, whereas, in pressurized liquid systems, the strain energy in the container walls represents the more significant portion of the total explosion energy available, especially in high-pressure systems.

C-2.1.3 Small-volume liquid systems pressurized to over 34,500 kPa (5000 psi), large-volume systems at low pressures, or systems contained by vessels made of materials that exhibit high elasticity should be evaluated for energy release potential under accident conditions. This does not imply that nonelastic materials of construction are preferred. Materials with predictable failure modes are preferred.

C-2.1.4 Liquid systems containing entrained air or gas will store more potential energy and are, therefore, more hazardous than totally liquid systems because the gas becomes the driving force behind the liquid.

C-2.1.5 For gas-pressurized liquid systems, such as nitrogen over oil, an evaluation of the explosion energy should be made for both the lowest and highest possible liquid levels.

C-2.1.6 For two-phase systems, such as carbon dioxide, an energy evaluation should be made for the entire system in the gas phase and the expansion of the maximum available liquid to the gas phase should then be considered.

†Table B-3.4.2 Fire Resistance Ratings (in Hours) for Type I through Type V Construction

	Type I		Type II			Type III		Type IV	Type V	
	443	332	222	111	000	211	200	2HH	111	000
EXTERIOR BEARING WALLS —										
Supporting more than one floor, columns, or other bearing walls	4	3	2	1	0 ¹	2	2	2	1	0 ¹
Supporting one floor only	4	3	2	1	0 ¹	2	2	2	1	0 ¹
Supporting a roof only	4	3	1	1	0 ¹	2	2	2	1	0 ¹
INTERIOR BEARING WALLS —										
Supporting more than one floor, columns, or other bearing walls	4	3	2	1	0	1	0	2	1	0
Supporting one floor only	3	2	2	1	0	1	0	1	1	0
Supporting roofs only	3	2	1	1	0	1	0	1	1	0
COLUMNS —										
Supporting more than one floor, columns or other bearing walls	4	3	2	1	0	1	0	H ²	1	0
Supporting one floor only	3	2	2	1	0	1	0	H ²	1	0
Supporting roofs only	3	2	1	1	0	1	0	H ²	1	0
BEAMS, GIRDERS, TRUSSES, AND ARCHES —										
Supporting more than one floor, columns or other bearing walls	4	3	2	1	0	1	0	H ²	1	0
Supporting one floor only	3	2	2	1	0	1	0	H ²	1	0
Supporting roofs only	3	2	1	1	0	1	0	H ²	1	0
FLOOR CONSTRUCTION	3	2	2	1	0	1	0	H ²	1	0
ROOF CONSTRUCTION	2	1 1/2	1	1	0	1	0	H ²	1	0
EXTERIOR NONBEARING WALLS	0 ¹	0 ¹	0 ¹	0 ¹	0 ¹	0 ¹	0 ¹	0 ¹	0 ¹	0 ¹

Those members listed that are permitted to be of approved combustible material.

¹Requirements for fire resistance of exterior walls, the provision of spandrel wall sections, and the limitation or protection of wall openings are not related to construction type. They need to be specified in other standards and codes, where appropriate, and may be required in addition to the requirements of this standard for the construction type.

²“H” indicates heavy timber members; see text for requirements.

C-2.2 Deflagration.

C-2.2.1 A deflagration is a rapid combustion or decomposition reaction in which the reaction zone (flame front) progresses below the speed of sound through the unburned medium.

C-2.2.2 The reaction rate is proportional to the increasing pressure of the reaction. A deflagration can, under some conditions, accelerate and build into a detonation. The deflagration-to-detonation transition (D-D-T) is influenced by confinement that allows compression waves to advance and create higher pressures that continue to increase the deflagration rates. This is commonly called “pressure piling.”

C-2.3 Detonation.

C-2.3.1 A detonation is a rapid combustion reaction that takes place at or above the speed of sound in the unburned medium.

C-2.3.2 A detonation will cause a high-pressure shock wave to propagate outwardly, through the surrounding environment, at velocities above the speed of sound.

C-2.4 Thermal Explosion. A thermal explosion is a self-accelerating exothermic decomposition that occurs throughout the entire mass with no separate, distinct reaction zone.

C-2.4.1 A thermal explosion can accelerate into a detonation.

C-2.4.2 The peak pressure and rate of pressure rise in a thermal explosion are directly proportional to the amount of material undergoing reaction per unit volume of the container. This is quite unlike gas or vapor explosions, where the loading density is normally fixed by the combustible mixture at one atmosphere. The Frank-Kamenetskii theory is useful in evaluating the critical mass in the thermal explosion of solids.

C-3 Effects of Explosions.

C-3.1 Personnel Exposure. Personnel exposed to the effects of an explosion are susceptible to injury from:

- Missiles and explosion-dispersed materials;
- Thermal and corrosive burns;
- Inhalation of explosion products;
- Overpressure, including incident, reflection-reinforced incident, and sustained overpressure; and
- Body blowdown and whole-body displacement.

Injuries from missiles and explosion-dispersed materials, burns, and inhalation of toxic gases account for the majority of injuries related to small explosions. Approximation of physiological damage due to explosions is given in Tables C-3.1(a) and (b).

Table C-3.1(a) Blast Effects from Detonations Range in Feet for Indicated Explosive Yield (TNT Equivalent)

Blast Effect	0.1 gm	1.0 gm	10 gm	100 gm	Criteria	
1% Eardrum Rupture	1.1	2.4	5.2	11	23.5 kPa	($P_i = 3.4$ psi)
50% Eardrum Rupture	0.47	1.0	2.2	4.7	110 kPa	($P_i = 16$ psi)
No Blowdown	0.31	1.3	6.9	~30	57 kPa • msec 0.9 m/sec	($I_i + I_q = 1.25$ psi • msec) ($V_{max} = 0.3$ ft/sec)
50% Blowdown	<0.1	0.29	1.1	4.1	57 kPa • msec 0.6 m/sec	($I_i + I_q = 8.3$ psi • msec) ($V_{max} = 2.0$ ft/sec)
1% Serious Displacement Injury	<0.1	<0.2	<0.5	~1.1	373 kPa • msec V_{max} 4 msec	($I_i + I_q = 54$ psi • msec) ($V_{max} = 13$ ft/sec)
Threshold Lung Hemorrhage	<0.1	<0.2	~0.5	1.8	180 kPa • msec	($I_i + I_q = 26$ psi • msec)
Severe Lung Hemorrhage	<0.1	<0.2	<0.5	~1.1	360 kPa • msec	($I_i + I_q = 52$ psi • msec)
1% Mortality	<0.1	<0.2	<0.5	<1	590 kPa • msec	($I_i + I_q = 85$ psi • msec)
50% Mortality	<0.1	<0.2	<0.5	<1	900 kPa • msec	($I_i + I_q = 130$ psi • msec)
50% Large 1.5 m ² –2.3 m ² (16 ft ² –25 ft ²) Windows Broken	0.26	1.1	5.7	~30	21 kPa • msec	($I_r = 3$ psi • msec)
50% Small 0.12 m ² –0.56 m ² (1.3 ft ² –6 ft ²) Windows Broken	0.17	0.40	1.9	9.9	55 kPa • msec	($I_r = 8$ psi • msec)

P_i = the peak incident overpressure kPa (psi).

V_{max} = the maximum translational velocity for an initially standing man m/sec (ft/sec).

I_i = the impulse in the incident wave kPa • msec (psi • msec).

I_q = the dynamic pressure impulse in the incident wave kPa • msec (psi • msec).

I_r = the impulse in the incident wave upon reflection against a surface perpendicular to its path of travel kPa • msec (psi • msec).

NOTE: The overpressure-distance curves of thermal explosions and deflagrations do not match those of TNT detonations. Nondetonation explosions have lower overpressures in close for comparable energy releases but carry higher overpressures to greater distances. The critical factor is impulse. Impulse is the maximum incident overpressure (psi) multiplied by the pulse duration (msec).

C-3.2 Damage to Structural Elements. The potential for damage to high-value buildings and equipment also warrants special consideration. Failure of building components should not be overlooked as a source of injury to personnel.

C-3.2.1 Where the incident impulse is reinforced by reflection, as will be the case in large explosions within or near structures, the incident peak pressures for given damage are substantially lowered. The reflected pressure might be from two to 19 times greater than the incident pressure, depending on the magnitude of the incident pressure and the distance from reflecting surfaces. However, when a small explosion located more than a few inches from a reflecting surface has a TNT equivalence of less than 100 gm (3.5 oz), the reinforcement phenomenon is negligible because of the rapid decay of both the incident pressure wave and the reflected pressure wave with distance.

C-3.2.2 Thermal explosions and deflagrations having impulses with rates of pressure rise greater than 20 milliseconds require peak pressures approximately three times those of detonations in order to produce similar damage.

C-3.2.3 A sustained overpressure will result when a large explosion occurs in a building with few openings or inadequate explosion venting. This sustained overpressure is more damaging than a short duration explosion of equivalent rate of pressure rise and peak pressure. Explosions with TNT equivalencies of less than 100 gm (3.5 oz) would not be expected to create significant sustained overpressures, except in small enclosures. (For small explosions, burns, inhalation of toxic gases, and missile injuries usually exceed blast wave injuries.)

Table C-3.1(b) Criteria for Estimating Missile Injuries

Kind of Missile	Critical Organ or Event	Related Impact Velocity	
		m/sec	(ft/sec)
Nonpenetrating 4.5-kg (10-lb) object	Cerebral concussion		
	Threshold	4.6	(15)
	Skull fracture		
	Threshold	4.6	(15)
Penetrating ¹ 10-gm (0.35-oz) glass fragments	Near 100%	7.0	(23)
	Skin laceration		
	Threshold	15	(50)
	Serious wounds		
	Threshold	30	(100)
	50%	55	(180)
	100%	91	(300)

¹Eye damage, lethality, or paralysis can result from penetrating missiles at relatively low velocities striking eyes, major blood vessels, major nerve centers, or vital organs.

C-4 Hazard Analysis.

C-4.1 The determination of the degree of hazard presented by a specific operation is a matter of judgment. An explosion hazard should be evaluated in terms of likelihood, severity, and the consequences of an explosion, as well as the protection required to substantially reduce the hazard. A review of the explosion hazard analysis at an appropriate level of management is recommended.