

---

---

**Elastomeric seismic-protection  
isolators —**

**Part 1:  
Test methods**

*Appareils d'appuis structuraux en élastomère pour protection  
sismique —*

*Partie 1: Méthodes d'essai*



**PDF disclaimer**

This PDF file may contain embedded typefaces. In accordance with Adobe's licensing policy, this file may be printed or viewed but shall not be edited unless the typefaces which are embedded are licensed to and installed on the computer performing the editing. In downloading this file, parties accept therein the responsibility of not infringing Adobe's licensing policy. The ISO Central Secretariat accepts no liability in this area.

Adobe is a trademark of Adobe Systems Incorporated.

Details of the software products used to create this PDF file can be found in the General Info relative to the file; the PDF-creation parameters were optimized for printing. Every care has been taken to ensure that the file is suitable for use by ISO member bodies. In the unlikely event that a problem relating to it is found, please inform the Central Secretariat at the address given below.

STANDARDSISO.COM : Click to view the full PDF of ISO 22762-1:2005

© ISO 2005

All rights reserved. Unless otherwise specified, no part of this publication may be reproduced or utilized in any form or by any means, electronic or mechanical, including photocopying and microfilm, without permission in writing from either ISO at the address below or ISO's member body in the country of the requester.

ISO copyright office  
Case postale 56 • CH-1211 Geneva 20  
Tel. + 41 22 749 01 11  
Fax + 41 22 749 09 47  
E-mail [copyright@iso.org](mailto:copyright@iso.org)  
Web [www.iso.org](http://www.iso.org)

Published in Switzerland

# Contents

Page

Foreword .....	iv
Introduction .....	v
1 Scope .....	1
2 Normative references .....	1
3 Terms and definitions .....	2
4 Symbols and abbreviated terms .....	4
5 Rubber material tests .....	10
5.1 Test items .....	10
5.2 Test conditions and test pieces .....	10
5.3 Tensile properties .....	10
5.4 Ageing test .....	11
5.5 Hardness .....	11
5.6 Adhesion .....	11
5.7 Compression set .....	11
5.8 Dynamic shear properties .....	11
5.9 Fracture properties .....	14
5.10 Brittleness point .....	14
5.11 Ozone resistance .....	14
5.12 Low temperature crystallization .....	14
6 Isolator tests .....	15
6.1 General .....	15
6.2 Compression and shear stiffness tests .....	15
6.3 Various dependence tests .....	26
6.4 Ultimate shear properties .....	39
6.5 Tensile testing .....	41
6.6 Durability testing .....	44
6.7 Reaction force due to low-rate deformation .....	51
Annex A (normative) Determination of accelerated ageing conditions equivalent to expected life at 23 °C .....	54
Annex B (normative) Inertia force correction .....	57
Annex C (normative) Friction force correction .....	59
Annex D (normative) Determination of coefficient of linear thermal expansion .....	62
Annex E (informative) Confirmation list .....	64
Annex F (informative) Alternative methods of determining shear properties .....	66
Annex G (informative) Creep test .....	68
Annex H (informative) Determination of reaction force due to low-rate deformation .....	70
Annex I (informative) Durability investigation of elastomeric isolators used for 10 years in a bridge .....	72
Annex J (informative) Durability investigation of elastomeric isolators used for 7 years in a building .....	74
Bibliography .....	78

## Foreword

ISO (the International Organization for Standardization) is a worldwide federation of national standards bodies (ISO member bodies). The work of preparing International Standards is normally carried out through ISO technical committees. Each member body interested in a subject for which a technical committee has been established has the right to be represented on that committee. International organizations, governmental and non-governmental, in liaison with ISO, also take part in the work. ISO collaborates closely with the International Electrotechnical Commission (IEC) on all matters of electrotechnical standardization.

International Standards are drafted in accordance with the rules given in the ISO/IEC Directives, Part 2.

The main task of technical committees is to prepare International Standards. Draft International Standards adopted by the technical committees are circulated to the member bodies for voting. Publication as an International Standard requires approval by at least 75 % of the member bodies casting a vote.

Attention is drawn to the possibility that some of the elements of this document may be the subject of patent rights. ISO shall not be held responsible for identifying any or all such patent rights.

ISO 22762-1 was prepared by Technical Committee ISO/TC 45, *Rubber and rubber products*, Subcommittee SC 4, *Products (other than hoses)*.

ISO 22762 consists of the following parts, under the general title *Elastomeric seismic-protection isolators*:

- *Part 1: Test methods*
- *Part 2: Applications for bridges — Specifications*
- *Part 3: Applications for buildings — Specifications*

## Introduction

This International Standard contains two parts related to specifications for isolators — one for bridges and the other for buildings — since the requirements for isolators for bridges and for buildings are quite different, although the basic concept of the two products is similar. Therefore, when this International Standard is applied to the design of bridge isolators, Part 2 and the relevant clauses in Part 1 are used and, when it is applied to building isolators, Part 3 and the relevant clauses in Part 1 are used.

The main differences to be noted between isolators for bridges and isolators for buildings are as below:

- a) Isolators for bridges are mainly rectangular in shape and those for buildings circular in shape.
- b) Isolators for bridges are designed to be used for both rotation and horizontal displacement, while isolators for buildings are designed for horizontal displacement only.
- c) Isolators for bridges are designed to perform on a daily basis to accommodate length changes of bridges caused by temperature changes as well as during earthquakes, while isolators for buildings are designed to perform only during earthquakes.
- d) Isolators for bridges are designed to withstand dynamic loads caused by vehicles on a daily basis as well as earthquakes, while isolators for buildings are mainly designed to withstand dynamic loads caused by earthquakes only.

For structures that are neither buildings nor bridges (e.g. tanks), the structural engineer may use either Part 2 or Part 3 of this International Standard, depending on the requirements of the structure.



# Elastomeric seismic-protection isolators —

## Part 1: Test methods

### 1 Scope

ISO 22762 applies to elastomeric seismic isolators used to provide buildings or bridges with protection from earthquake damage. The isolators covered consist of alternate rubber layers and reinforcing steel plates. They are placed between a superstructure and its substructure to provide both flexibility for decoupling structural systems from ground motion, and damping capability to reduce displacement at the isolation interface and the transmission of energy from the ground into the structure at the isolation frequency.

This part of ISO 22762 specifies the test methods for determination of the characteristics of elastomeric seismic isolators and for measurement of the properties of the rubber material used in their manufacture.

The specifications cover testing for all properties required in the elastomeric isolators, such as compression and shear properties, the durability of the isolators and the physical properties of the materials used in isolators.

Annex E may be used to review those requirements needing confirmation prior to the test programme.

### 2 Normative references

The following referenced documents are indispensable for the application of this document. For dated references, only the edition cited applies. For undated references, the latest edition of the referenced document (including any amendments) applies.

ISO 37, *Rubber, vulcanized or thermoplastic — Determination of tensile stress-strain properties*

ISO 48, *Rubber, vulcanized or thermoplastic — Determination of hardness (hardness between 10 IRHD and 100 IRHD)*

ISO 188, *Rubber, vulcanized or thermoplastic — Accelerated ageing and heat resistance tests*

ISO 812, *Rubber, vulcanized — Determination of low-temperature brittleness*

ISO 813, *Rubber, vulcanized or thermoplastic — Determination of adhesion to a rigid substrate — 90° peel method*

ISO 815, *Rubber, vulcanized or thermoplastic — Determination of compression set at ambient, elevated or low temperatures*

ISO 1431-1, *Rubber, vulcanized or thermoplastic — Resistance to ozone cracking — Part 1: Static and dynamic strain testing*

ISO 1827, *Rubber, vulcanized or thermoplastic — Determination of modulus in shear or adhesion to rigid plates — Quadruple shear method*

ISO 3387, *Rubber — Determination of crystallization effects by hardness measurements*

ISO 4664-1, *Rubber, vulcanized or thermoplastic — Determination of dynamic properties — Part 1: General considerations*

ISO 7500-1:2004, *Metallic materials — Verification of static uniaxial testing machines — Part 1: Tension/compression testing machines — Verification and calibration of the force-measuring system*

ISO 7619-2, *Rubber, vulcanized or thermoplastic — Determination of indentation hardness — Part 2: IRHD pocket meter method*

ISO 11346:2004, *Rubber, vulcanized or thermoplastic — Estimation of life-time and maximum temperature of use*

ISO 22762-2, *Elastomeric seismic-protection isolators — Part 2: Applications for bridges — Specifications*

ISO 22762-3, *Elastomeric seismic-protection isolators — Part 3: Applications for buildings — Specifications*

ISO 23529, *Rubber — General procedures for preparing and conditioning test pieces for physical test methods*

### 3 Terms and definitions

For the purposes of this document, the following terms and definitions apply.

- 3.1  
breaking**  
rupture of elastomeric isolator due to compression (or tension)-shear loading
- 3.2  
buckling**  
state when elastomeric isolators lose their stability under compression-shear loading
- 3.3  
compressive properties of elastomeric isolator**  
compressive stiffness ( $K_v$ ) for all types of rubber bearings
- 3.4  
compressive-shear testing machine**  
machine used to test elastomeric isolators, which has the capability of shear loading under constant compressive load
- 3.5  
cover rubber**  
rubber wrapped around the outside of inner rubber and reinforcing steel plates before or after curing of elastomeric isolators for the purpose of protecting the inner rubber from deterioration due to oxygen, ultraviolet rays and other natural elements and protecting the reinforcing plates from corrosion
- 3.6  
design compressive stress**  
long term compressive force on the elastomeric isolator imposed by the structure
- 3.7  
effective loaded area**  
area sustaining vertical load in elastomeric isolators, which corresponds to the area of reinforcing steel plates



**3.8****effective width**

⟨rectangular elastomeric isolator⟩ the smaller of the two side lengths of inner rubber to which direction shear displacement is not restricted

**3.9****elastomeric isolator**

rubber bearing, for seismic isolation of buildings, bridges and other structures, which consists of multi-layered vulcanized rubber sheets and reinforcing steel plates

NOTE Types of such isolators include high-damping rubber bearings, linear natural rubber bearings and lead rubber bearings.

**3.10****first shape factor**

ratio of effectively loaded area to free deformation area of one inner rubber layer between steel plates

**3.11****high-damping rubber bearing****HDR**

elastomeric isolator with relatively high damping properties obtained by special compounding of the rubber and the use of additives

**3.12****inner rubber**

rubber between multi-layered steel plates inside an elastomeric isolator

**3.13****lead rubber bearing****LRB**

elastomeric isolator whose inner rubber with a lead plug or lead plugs press fitted into a hole or holes of the isolator body to achieve damping properties

**3.14****linear natural rubber bearing****LNR**

elastomeric isolator with linear shear force-deflection characteristics and relatively low damping properties and fabricated using natural rubber

NOTE Any bearing with relatively low damping may be treated as an LNR bearing for the purposes of isolator testing.

**3.15****maximum compressive stress**

maximum compressive stress acting briefly on elastomeric isolators during an earthquake

**3.16****nominal compressive stress**

long-term compressive stress recommended by the manufacturer for the isolator, including the safety margin

**3.17****roll-out**

instability of an isolator with either dowelled or recessed connection under shear displacement

**3.18****routine test**

a test for quality control of the production isolators during and after manufacturing

### 3.19

#### second shape factor

⟨circular elastomeric isolator⟩ ratio of the diameter of the inner rubber to the total thickness of the inner rubber

⟨rectangular or square elastomeric isolator⟩ ratio of the effective width of the inner rubber to the total thickness of the inner rubber

### 3.20

#### shear properties of elastomeric isolators

a comprehensive term that covers characteristics determined from isolator tests:

- shear stiffness ( $K_h$ ) for LNR;
- shear stiffness ( $K_h$ ) and equivalent damping ratio ( $h_{eq}$ ) for HDR and LRB;
- post-yield stiffness ( $K_d$ ) and characteristic strength ( $Q_d$ ) for LRB.

### 3.21

#### structural engineer

engineer who is in charge of designing of structure for base-isolated bridges or buildings and is responsible for specifying the requirements for elastomeric isolators

### 3.22

#### type test

test for verification either of material properties and isolator performances during development of the product or that project design parameters are achieved

### 3.23

#### ultimate properties

properties at either buckling, breaking, or roll-out of an isolator under compression-shear loading

### 3.24

#### ultimate property diagram

##### UPD

diagram giving the interaction curve of compressive stress and buckling strain or breaking strain of an elastomeric isolator

## 4 Symbols and abbreviated terms

For the purposes of all three parts of ISO 22762, the symbols given in Table 1 apply.

Table 1 — Symbols and definitions

Symbol	Definition
$A$	effective plan area; plan area of elastomeric isolator excluding cover rubber portion
$A_b$	effective area of bolt
$A_e$	overlap area between the top and bottom elastomer area of isolator sheared under non-seismic displacement
$A_{free}$	load-free area of isolator
$A_{load}$	loaded area of isolator
$A_p$	area of the lead plug for a lead rubber bearing

$a$	side length of square elastomeric isolator excluding cover rubber thickness, or length in longitudinal direction of rectangular isolator excluding cover rubber thickness
$a_e$	length of the shorter side of the rectangular isolator including cover rubber thickness
$a'$	length in longitudinal direction of the rectangular isolator, including cover rubber thickness
$B$	effective width for bending of flange
$b$	length in transverse direction of the rectangular isolator, excluding cover rubber thickness
$b'$	length in transverse direction of the rectangular isolator, including cover rubber thickness
$c$	distance from centre of bolt hole to effective flange section
$D'$	outer diameter of circular isolator, including cover rubber
$D_f$	diameter of flange
$d_i$	inner diameter of reinforcing steel plate
$d_k$	diameter of bolt hole
$d_o$	outer diameter of reinforcing steel plate
$E_{ap}$	apparent Young's modulus of bonded rubber layer
$E_c$	apparent Young's modulus corrected, if necessary, by allowing for compressibility
$E_c^s$	apparent Young's modulus corrected for bulk compressibility depending on its shape factor ( $S_1$ )
$E_\infty$	bulk modulus of rubber
$E_0$	Young's modulus of rubber
$F_u$	tensile force on isolator by uplift
$G$	shear modulus
$G_{eq}(\gamma)$	equivalent linear shear modulus at shear strain $\gamma$
$H$	height of elastomeric isolator including mounting flange
$H_n$	height of elastomeric isolator excluding mounting flange
$h_{eq}$	equivalent damping ratio
$h_{eq}(\gamma)$	equivalent damping ratio as a function of shear strain
$K_d$	post-yield stiffness (tangential stiffness after yielding of lead plug) of lead rubber bearing
$K_h$	shear stiffness
$K_i$	initial shear stiffness
$K_p$	shear stiffness of lead plug inserted in lead rubber bearing
$K_r$	shear stiffness of lead rubber bearing before inserting lead plug
$K_t$	tangential shear stiffness
$K_v$	compressive stiffness
$L_f$	length of one side of a square flange
$M$	resistance to rotation

$M_f$	moment acting on bolt
$M_r$	moment acting on isolator
$n$	number of rubber layers
$n_b$	number of fixing bolts
$P$	compressive force
$P_0$	design compressive force
$P_{\max}$	maximum design compressive force
$P_{\min}$	minimum design compressive force
$Q$	shear force
$Q_b$	shear force at break
$Q_{\text{buk}}$	shear force at buckling
$Q_d$	characteristic strength
$S_1$	first shape factor
$S_2$	second shape factor
$T$	temperature
$T_r$	total rubber thickness, given by $T_r = n \times t_r$
$t_r$	thickness of one rubber layer
$t_{r1}, t_{r2}$	thickness of rubber layer laminated on each side of plate
$t_s$	thickness of one reinforcing steel plate
$t_o$	thickness of outside cover rubber
$U(\gamma)$	function giving ratio of characteristic strength to maximum shear force of a loop
$V$	uplift force
$v$	loading velocity
$W_d$	energy dissipated per cycle
$X$	shear displacement
$X_0$	design shear displacement
$X_b$	shear displacement at break
$X_{\text{buk}}$	shear displacement at buckling
$X_s$	shear displacement due to quasi-static shear movement
$X_{\max}$	maximum design shear displacement
$X_d$	shear displacement due to dynamic shear movement
$Y$	compressive displacement
$Z$	section modulus of flange
$\alpha$	coefficient of linear thermal expansion

$\gamma$	shear strain
$\gamma_0$	design shear strain
$\gamma_a$	upper limit of the total of design strains on elastomeric isolators
$\gamma_b$	shear strain at break
$\gamma_c$	local shear strain due to compressive force
$\gamma_d$	shear strain due to dynamic shear movement
$\gamma_{\max}$	maximum shear strain during earthquake
$\gamma_r$	local shear strain due to rotation
$\gamma_s$	shear strain due to quasi-static shear movement
$\gamma_u$	ultimate shear strain
$\delta_H$	horizontal offset of isolator
$\delta_V$	difference in isolator height measured between two points at opposite extremes of the isolator
$\varepsilon$	compressive strain of isolator
$\varepsilon_{cr}$	creep strain
$\varepsilon_T$	tensile strain of isolator
$\varepsilon_{Tb}$	tensile-break strain of isolator
$\varepsilon_{Ty}$	tensile-yield strain of isolator
$\zeta$	ratio of total rubber height to total height of rubber and steel layers
$\theta$	rotation angle of isolator about the diameter of a circular bearing or about an axis through a rectangular bearing
$\theta_a$	rotation angle of isolator in the longitudinal direction (a)
$\theta_b$	rotation angle of isolator in the transverse direction (b)
$\lambda$	correction factor for calculation of stress in reinforcing steel plates
$\eta$	correction factor for calculation of critical stress
$\kappa$	correction factor for apparent Young's modulus according to hardness
$\Sigma\gamma$	total local shear strain
$\sigma$	compressive stress in isolator
$\sigma_0$	design compressive stress
$\sigma_B$	tensile stress in bolt
$\sigma_b$	bending stress in flange
$\sigma_{bf}$	allowable bending stress in steel
$\sigma_{cr}$	critical stress in isolator
$\sigma_f$	allowable tensile stress in steel
$\sigma_{\max}$	maximum design compressive stress

$\sigma_{\min}$	minimum design compressive stress
$\sigma_{\text{nom}}$	for building: nominal long term compressive stress recommended by manufacturer
$\sigma_s$	tensile stress in reinforcing steel plate
$\sigma_{\text{sa}}$	allowable tensile stress in steel plate
$\sigma_{\text{sy}}$	yield stress of steel for flanges and reinforcing steel plates
$\sigma_{\text{su}}$	tensile strength of steel for flanges and reinforcing steel plates
$\sigma_t$	tensile stress
$\sigma_{\text{te}}$	allowable tensile stress in isolator
$\sigma_{\text{yi}}$	yield stress in steel plate
$\tau_B$	shear stress in bolt
$\tau_f$	allowable shear stress in steel
$\phi$	factor for computation of buckling stability
$\psi$	factor for computation of buckling check
$\xi$	factor for computation of critical stress

STANDARDSISO.COM : Click to view the full PDF of ISO 22762-1:2005

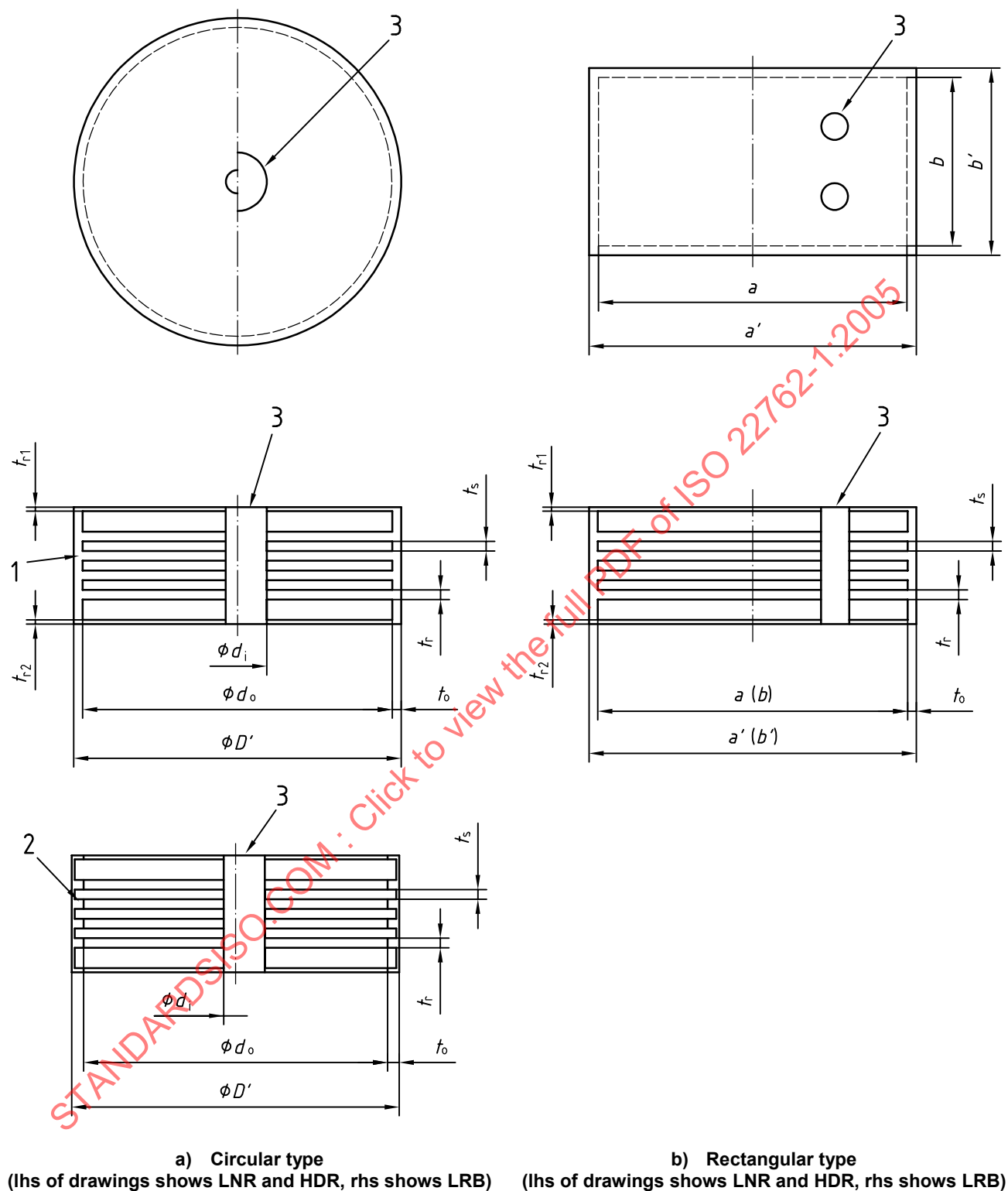


Figure 1 — Cross-section of isolator

## 5 Rubber material tests

### 5.1 Test items

In order to assure the required quality of elastomeric isolators, it is necessary to specify the physical properties of the rubber materials and the adhesion between the rubber and the steel plates. The basic properties of rubber materials related to performance of elastomeric isolators are shown as test items in Table 2.

**Table 2 — Test items of rubber materials**

Properties	Test items	Related standard(s)
Tensile properties	Tensile strength	ISO 37
	Elongation at break	
	100 % modulus	
Ageing properties	Tensile strength	ISO 188
	Elongation at break	ISO 37
	100 % modulus	
Hardness	Hardness	ISO 48 ISO 7619-2
Adhesion	90° peel strength between metal and rubber Classification of fracture mode	ISO 813
Compression set	Compression set	ISO 815
Shear properties	Shear modulus	ISO 4664-1
	Equivalent damping ratio	
	Temperature dependence of shear modulus and equivalent damping ratio	
	Repeated deformation dependence of shear modulus and equivalent damping ratio	
	Fracture strength	ISO 1827
	Fracture strain	
Brittleness point	Brittleness temperature	ISO 812
Ozone resistance (ozone cracking test on vulcanized rubber)	Inspection of deterioration	ISO 1431-1 (static strain test)
Low temperature crystallization	Hardness	ISO 3387

### 5.2 Test conditions and test pieces

The temperature and humidity in the laboratory, the preparation of test pieces, and methods for measuring thickness and width, etc., shall be in accordance with ISO 23529.

Moulded test pieces shall be used. They shall be cured to have properties as similar as practicable to the rubber in the bulk of the isolator.

### 5.3 Tensile properties

The tensile test should preferably be carried out by the method specified in ISO 37. However, the test piece specified in Table 3 can be used.



**Table 3 — Test piece dimensions**

Dimensions in millimetres

Width of parallel-sided section	Length of parallel-sided section	Thickness of parallel-sided section	Distance between marked lines
$5 \pm 0,1$	20	$2,0 \pm 0,2$	20

## 5.4 Ageing test

### 5.4.1 Ageing properties of inner rubber

#### 5.4.1.1 Anaerobic ageing

A set of ageing tests shall be performed on the inner rubber under anaerobic conditions as described in Annex A. The properties monitored shall be either 100 % shear modulus and shear failure strain or the tensile properties — 100 % modulus, tensile strength and elongation at break. From the results of these tests, the activation energy is obtained based on the method specified in Annex A. Ageing conditions equivalent to the expected lifetime (60 years or the period specified by the structural engineer) at 23 °C shall be determined from this activation energy, and an ageing test shall then be performed for the properties monitored under conditions equivalent to the expected lifetime.

#### 5.4.1.2 Air ageing

An ageing test shall be performed on the inner rubber in accordance with the method specified in ISO 188, monitoring the tensile strength and elongation at break. The test time and temperature shall be as specified in ISO 22762-2 or ISO 22762-3.

### 5.4.2 Ageing properties of cover rubber

An ageing test shall be performed on the cover rubber in accordance with the method specified in ISO 188, monitoring the tensile strength and elongation at break. The test time and temperature shall be as specified in ISO 22762-2 or ISO 22762-3.

## 5.5 Hardness

Hardness shall be measured in accordance with the method specified in ISO 48 or ISO 7619-2.

## 5.6 Adhesion

An adhesion test shall be carried out as specified in ISO 813.

## 5.7 Compression set

Compression set shall be determined in accordance with the method specified in ISO 815. The test piece shall be either a large-type or small-type cylindrical disc. Test conditions and requirements shall be as specified in ISO 22762-2 or ISO 22762-3.

## 5.8 Dynamic shear properties

### 5.8.1 General

These tests shall be carried out as specified in ISO 4664-1, except for the test piece and analysis of test results, in order to investigate the temperature, frequency, strain and repeated deformation dependence of the shear modulus and equivalent damping ratio of rubber materials.

## 5.8.2 Test equipment

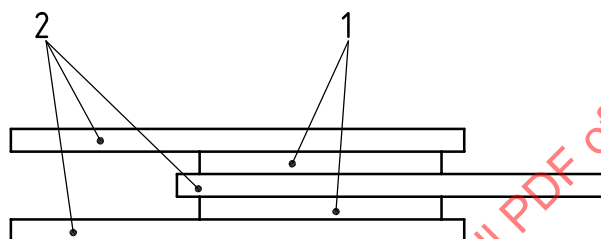
An apparatus as described in ISO 4664-1 which can measure vibration frequencies higher than 0,2 Hz and shear strain amplitudes up to 400 % shall be used.

## 5.8.3 Test pieces

The shape and dimensions of the test pieces are different from those specified in ISO 4664-1. Use either test piece specified below. Each test shall be performed on a previously unused test piece except when indicated otherwise.

### a) Two-block lap shear type

As shown in Figure 2, this test piece consists of two rubber blocks bonded to three plates of metal. The size of one rubber block shall be 3,0 mm to 6,0 mm thick, 25 mm to 30 mm wide, and 25 mm to 30 mm long for a square pillar, or 3,0 mm to 6,0 mm thick and 25 mm to 30 mm in diameter for a cylindrical disc.



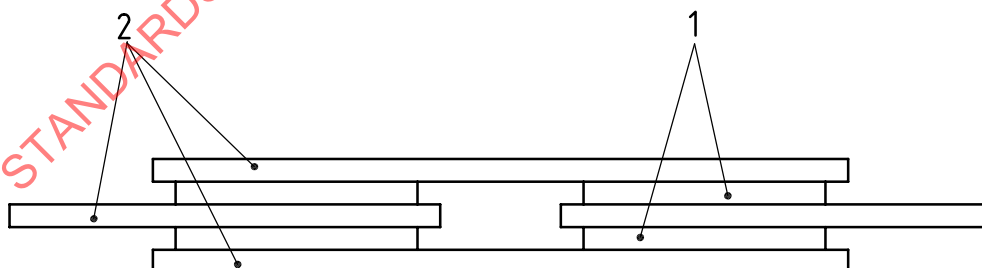
#### Key

- 1 rubber
- 2 metal plate

Figure 2 — Two-block lap shear type

### b) Four-block lap shear type

As shown in Figure 3, this test piece consists of four rubber blocks bonded to four plates of metal. The size of one rubber block shall be 3,0 mm to 6,0 mm thick, 25 mm to 30 mm wide, and 25 mm to 30 mm long for a square pillar, or 3,0 mm to 6,0 mm thick and 25 mm to 30 mm in diameter for a cylindrical disc.



#### Key

- 1 rubber
- 2 metal plate

Figure 3 — Four-block lap shear type

## 5.8.4 Test conditions

### 5.8.4.1 Test temperature

Test temperatures shall at least cover the range of service requirements. The values given in Table 4 shall be included if they are within the service range. As a minimum requirement, tests shall be performed at one frequency (0,2 Hz, 0,3 Hz or 0,5 Hz or the isolation frequency) and at one strain amplitude (100 %, 175 % or the design shear strain). Tests at more than one temperature may be carried out using one test piece provided that the tests are at one frequency and one strain amplitude, and that they are conducted in order of decreasing temperature. The tolerance shall be  $\pm 2$  °C for all temperatures.

**Table 4 — Test temperatures**

Test temperature, °C	−20	−10	0	23	40
----------------------	-----	-----	---	----	----

### 5.8.4.2 Frequency

The test frequencies shall be one of the sets given in Table 5, except that the isolation frequency, if known, may replace the one closest to it in the table. If the dynamic property tests of the isolators are performed at a lower frequency, this test shall also be carried out at that same frequency. As a minimum requirement, tests shall be performed at 23 °C, and at one strain amplitude (100 %, 175 % or the design shear strain).

Tests at more than one frequency may be carried out using one test piece provided that the tests are at one temperature and one strain amplitude, and that they are conducted in order of increasing frequency.

**Table 5 — Vibration frequencies**

Vibration frequency, Hz	Set 1	0,05	0,2	1,0
	Set 2	0,05	0,3	1,5
	Set 3	0,1	0,5	2,0

### 5.8.4.3 Shear strain

The shear strains shall be selected from Table 6. The shear strains shown in Table 6 differ from those specified in ISO 4664-1. It is recommended that the four ranges 5 %, 10 %, 50 %, and 100 % be selected from them. The test strains shall range from 5 % to at least  $1,5 \times$  the design shear strain. As a minimum requirement, tests shall be performed at one frequency (0,2 Hz, 0,3 Hz, 0,5 Hz or the isolation frequency) and at 23 °C. One test piece may be used to cover a range of strains, provided that the strain intervals are at least 50 % or a factor of 2 whichever is the lower, the tests are at one temperature and one frequency and they are carried out in order of increasing strain.

**Table 6 — Shear strains**

Shear strain, %	$\pm 5$	$\pm 10$	$\pm 25$	$\pm 50$	$\pm 75$	$\pm 100$	$\pm 150$	$\pm 175$	$\pm 200$	$\pm 250$	$\pm 300$	$\pm 350$	$\pm 400$
-----------------	---------	----------	----------	----------	----------	-----------	-----------	-----------	-----------	-----------	-----------	-----------	-----------

### 5.8.4.4 Number of cycles

The number of loading cycles shall be either 3 or 11 cycles, and should be consistent with that of isolator tests.

### 5.8.5 Test results

The shear modulus and equivalent damping ratio shall be reported using the method specified in 6.2.2.6.

## 5.9 Fracture properties

A failure test shall be carried out as specified in ISO 1827. However, test pieces as specified in 5.8.3 shall be used.

### 5.10 Brittleness point

A brittleness temperature test shall be carried out as specified in ISO 812.

### 5.11 Ozone resistance

An ozone resistance test shall be carried out as specified in ISO 1431-1 (static strain test).

### 5.12 Low temperature crystallization

For elastomers susceptible to low temperature crystallization (e.g. those compounds based on natural rubber, polychloroprene and certain types of ethylene propylene), the resistance to this phenomenon shall be checked by measuring the change in the hardness at low temperature, if the service temperature falls within the range where crystallization may occur. Natural rubber shall be checked if the minimum service temperature  $T_L$  is  $< 0^\circ\text{C}$ , and polychloroprene if the minimum service temperature  $T_L$  is  $< 5^\circ\text{C}$ .

The test shall be conducted in accordance with ISO 3387, except that the test temperature and the duration of the test shall be as specified here, and a reading shall be taken after 3 h.

The duration and temperature of the test shall be set by the structural engineer in accordance with the service conditions, except that the test temperature for natural rubber shall not be below  $-25^\circ\text{C}$  and for polychloroprene not below  $-10^\circ\text{C}$ . The duration of the test at a particular temperature shall relate to the period over which the minimum daily service temperature may be at or below that temperature. It is recommended that, for natural rubber isolators, subjected to the service conditions in Table 7, where the time is the cumulative total for which the isolators are exposed to the specified temperatures without the temperature rising above  $+10^\circ\text{C}$ , a test shall be carried out for the time indicated at the test temperature corresponding to the range of the minimum service temperature as indicated in Table 7.

**Table 7 — Service and test conditions for natural rubber**

Minimum temperature, $T_L$ °C	$-10 \leq T_L < 0$	$-20 \leq T_L < -10$	$T_L < -20$
Time, days	$t_0$	$t_{10}$	$t_{20}$
Test temperature, °C	-10	-20	-25
Test period	$1,5t_0$	$1,5t_{10} + 0,1t_0$	$1,5t_{20} + 0,5t_{10} + 0,05t_0$

The time and temperature of test for polychloroprene-based isolators shall be based on the service temperature conditions defined in Table 8, where the time is the cumulative total for which the isolators are exposed to the specified temperatures without the temperature rising above  $+10^\circ\text{C}$ . A test shall be carried out for the time indicated at the test temperature corresponding to the range of the minimum service temperature as indicated in Table 8.

**Table 8 — Service and test conditions for chloroprene rubber**

Minimum temperature, $T_L$ °C	$0 \leq T_L < 5$	$-5 \leq T_L < 0$	$T_L < -5$
Time, days	$t_5$	$t_0$	$t_5$
Test temperature, °C	0	-5	-10
Test period	$1,5t_5$	$1,5t_0 + 0,5t_5$	$1,5t_{-5} + 0,5t_0 + 0,25t_5$

NOTE Some elastomers are susceptible to crystallization if the ambient temperature is low over a prolonged period. High-damping compounds of these elastomers may be more susceptible than conventional low-damping ones. The crystallization process involves a nucleation period, during which little change in rubber stiffness occurs, followed by a rapid stiffening as the crystallites grow. The nucleation period shortens as the temperature is lowered to that at which the rate of crystallization is highest. The minimum test temperatures specified for natural rubber and polychloroprene are those at which the rate of crystallization is highest. To ensure the performance of the isolator is not compromised, it is necessary that the nucleation period is not much exceeded during any continuous exposure to low temperatures. Crystallites melt when the ambient temperature of the isolators is raised sufficiently, and thus the effects are completely reversible. If polychloroprene is used, crystallization resistant grades should be chosen where low temperature conditions are to be encountered.

## 6 Isolator tests

### 6.1 General

In order to assure the required quality of elastomeric isolators, it is necessary to specify the functional requirements. The basic properties of elastomeric isolators are shown as test items in Table 9.

When the same test piece is used for several tests, it shall be noted if the performance is influenced by repetition.

NOTE Some of these properties may be determined using one of the standard test pieces detailed in Tables 10 and 11. The standard test piece is used for non-specific product testing, such as testing for the development of new materials and products.

### 6.2 Compression and shear stiffness tests

#### 6.2.1 Compression test

##### 6.2.1.1 Principle

By measuring the compressive force and displacement, the compression stiffness and compression behaviour of the elastomeric isolator can be determined.

##### 6.2.1.2 Test machine

The machine shown schematically in Figure 4 shall be capable of compressing the elastomeric isolator under controlled conditions. It shall also provide a method of measuring the compressive force and compressive displacement to an accuracy of less than or equal to 1 % of the maximum values recorded. The force calibration shall be based on ISO 7500-1. The machine shall maintain the parallelism of the upper and lower loading platens for the test piece attachment during the test. A Class 1 machine as defined in Clause 7 of ISO 7500-1:2004 is recommended.

In order to accurately measure the displacement of the elastomeric isolator, uniformly place two or more compressive displacement gauges around the test piece (so that they may be at the same distance from the test piece as shown in Figure 5). The average of those sensors shall be taken as a measurement value.

Table 9 — Test items for isolators

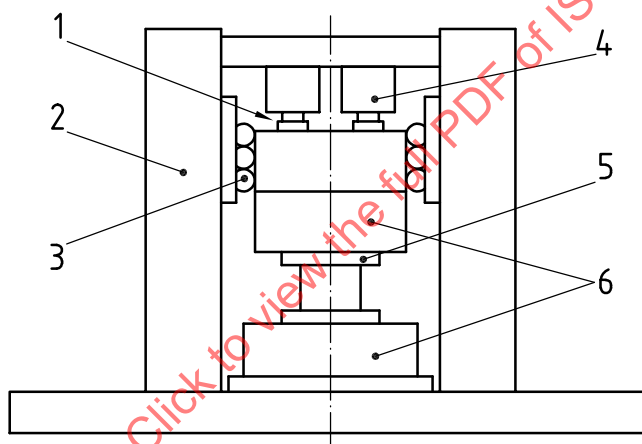
Properties	Test items	See Subclause
Compression properties	Compression stiffness	6.2.1
	Compression displacement	
Shear properties	Shear stiffness	6.2.2
	Equivalent damping ratio	
	Post-yield stiffness	
	Characteristic strength	
Dependency of shear properties	Shear strain dependency	6.3.1
	Compressive stress dependency	6.3.2
	Frequency dependency	6.3.3
	Repeated loading dependency	6.3.4
	Temperature dependency	6.3.5
Dependency of compressive properties	Shear strain dependency	6.3.6
	Compressive stress dependency	6.3.7
Ultimate shear properties	Breaking displacement (strain), force	6.4
	Buckling displacement (strain), force	
	Roll-out displacement (strain), force	
Tensile properties	Tensile breaking force	6.5
	Tensile yielding force	
	Shear strain	
Durability	Property change by ageing	6.6.1
	Creep	6.6.2
	Property change by fatigue	6.6.3
Force of reaction against low-rate deformation	Shear modulus at low-rate deformation	6.7

Table 10 — Standard test piece (square)

Item		Rubber isolator			Lead rubber isolator		
		No. 1	No. 2	No. 3	No. 1	No. 2	No. 3
Inner steel plate side length, mm	$a \times b$	100 × 100	240 × 240	400 × 400	100 × 100	240 × 240	400 × 400
Number of lead plugs	—	—	—	—	4	4	4
Diameter of lead plug, mm	—	—	—	—	14,5	34,5	57,5
Thickness of a single inner steel plate, mm	$t_s$	1 to 2	2 to 3	3 to 4	1 to 2	2 to 3	3 to 4
Thickness of a single rubber layer, mm	$t_r$	2	5	9	2	5	9
Number of rubber layers	$n$	6	6	6	6	6	6
Thickness of outside cover rubber, mm	$t_o$	5	5	10	5	5	10

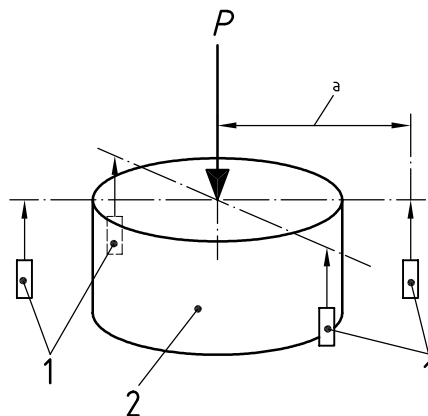
Table 11 — Standard test piece (circle)

Item		Rubber isolator			Lead rubber isolator		
Inner steel plate outer diameter, mm	$d_o$	150	250	500	150	250	500
Inner steel plate inner diameter, mm (diameter of lead plug)	$d_i$	7,5	12,5	25	30	50	100
Thickness of a single inner steel plate, mm	$t_s$	1 to 2	2 to 3	3 to 4	1 to 2	2 to 3	3 to 4
Thickness of a single rubber layer, mm	$t_r$	1,5	2,0	4,0	1,5	1,8	3,5
Number of rubber layers	$n$	20	25	25	20	28	28
Thickness of outside cover rubber, mm	$t_o$	4	6	8	4	6	8

**Key**

- 1 compression force load cell
- 2 frame
- 3 bearing
- 4 actuator
- 5 test piece
- 6 upper and lower loading platens

Figure 4 — Example of compression testing machine



**Key**

$P$  compressive force

1 displacement gauge

2 test piece

<sup>a</sup> The distance from the core of the laminated body to each displacement gauge shall be constant.

**Figure 5 — Compression displacement measurement sensor**

**6.2.1.3 Test piece**

The test piece shall be as specified in ISO 22762-2 or ISO 22762-3.

**6.2.1.4 Test conditions**

**6.2.1.4.1 Test temperature**

The temperature of the laboratory should preferably be in accordance with ISO 23529. When the test is conducted at another temperature, the test temperature shall be recorded.

**6.2.1.4.2 Conditioning time for a test piece**

Test pieces < 250 mm thick shall be left for at least 24 h after vulcanization. Thicker isolators shall be left for at least 48 h.

Before a test, the test piece shall be left for 6 h to 24 h or more in the environment where the test machine is located, and the temperature of the surface of the test piece shall be recorded. The conditioning time shall be chosen so that the temperature of the test piece is the same as the environment.

**6.2.1.4.3 Compressive force used in test**

The maximum compressive force shall be specified by the structural engineer. If a standard test piece is employed, it shall be loaded with the compressive force that is equivalent to the design compressive stress  $\sigma_0$  as defined in ISO 22762-2 or ISO 22762-3.

The relation between compressive force and compressive stress is as follows:

$$P = A_{\text{load}} \cdot \sigma$$

The tolerance shall be within  $\pm 5\%$  of each compressive stress.



#### 6.2.1.4.4 Input wave

The input wave shall be a sine wave or a triangular wave.

#### 6.2.1.4.5 Test vibration frequency

The lowest test vibration frequency shall be 0,001 Hz.

#### 6.2.1.5 Procedure

##### 6.2.1.5.1 Attachment of test piece and compressive displacement gauges

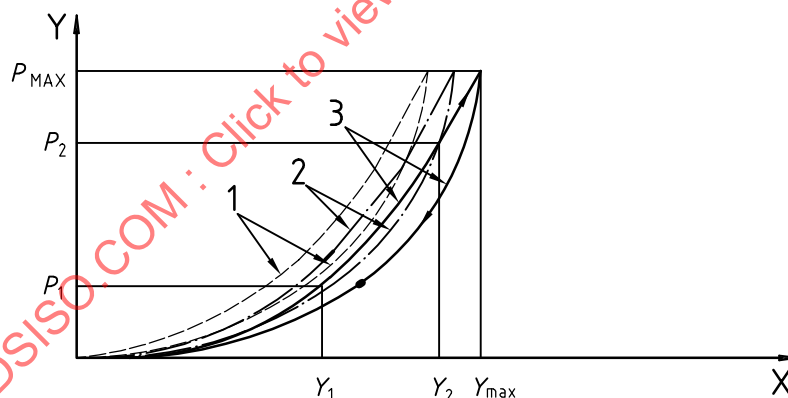
The test piece shall be attached to a test machine by the same or a mechanically equivalent manner as in the actual application. Compressive displacement gauges shall be attached to the periphery of the test piece. The compressive force at this time shall be zero, and the value of the compressive displacement shall be zero. If it is difficult to set a stable zero pressure because of machine controllability, a low arbitrary pressure could be regarded as “zero” by agreement between the structural engineer and the manufacturer.

##### 6.2.1.5.2 Loading

An appropriate loading process shall be chosen to satisfy the requirement of the isolator design. There are two methods:

##### Method 1 (see Figure 6)

Load the test piece with the maximum design compressive force  $P_{\max}$ , and then return to a no-load state. This process shall be one cycle. Three such cycles shall be performed.



#### Key

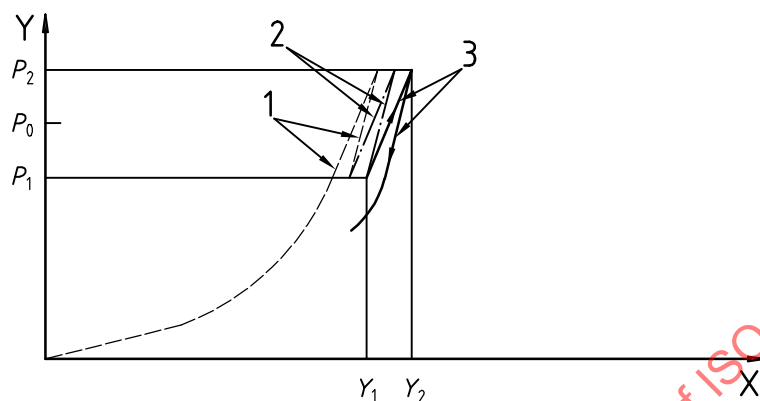
X compressive displacement,  $Y$   
Y compressive force,  $P$

- 1 first cycle
- 2 second cycle
- 3 third cycle

Figure 6 — Vertical properties (Method 1)

**Method 2 (see Figure 7)**

- a) Load the test piece with a compressive force  $P_0$  which is equivalent to the design compressive stress  $\sigma_0$ .
- b) Load the test piece with three cycles of compressive force between  $P_2$  and  $P_1$ , which are equivalent to  $\sigma_0$  plus/minus a certain percent (for example,  $\pm 30\%$ ). The loading sequence shall be as follows: 0,  $P_0$ ,  $P_2$ ,  $P_0$ ,  $P_1$  (first),  $P_0$ ,  $P_2$ ,  $P_0$ ,  $P_1$  (second),  $P_0$ ,  $P_2$ ,  $P_0$ ,  $P_1$  (third).  $P_2$  shall be the maximum design force.



**Key**

- X compressive displacement,  $Y$   
Y compressive force,  $P$

- 1 first cycle
- 2 second cycle
- 3 third cycle

**Figure 7 — Vertical properties (Method 2)**

The test piece shall be maintained under the maximum compressive force for a period specified by the structural engineer. A visual check of the test piece shall be conducted during this period and any signs of bond failure, surface cracks or other defects, misaligned reinforcing plates or non-uniform corrugations (if visible) due to bulging of rubber layers shall be recorded.

**6.2.1.6 Expression of results**

The amount of compressive displacement under compressive force shall be measured and the compressive stiffness  $K_v$  calculated by the following equation:

$$K_v = \frac{P_2 - P_1}{Y_2 - Y_1}$$

where (see Figures 6 and 7)

$P_1$  is the smaller compressive force in the third cycle;

$P_2$  is the larger compressive force in the third cycle;

$Y_1$  is the smaller displacement in the third cycle;

$Y_2$  is the larger displacement in the third cycle.

### 6.2.1.7 Test report

The test report shall include the following items:

- a) the number of this part of ISO 22762;
- b) type and classification, shape and dimensions, first shape factor and second shape factor of test piece;
- c) name of test machine;
- d) test temperature;
- e) input wave and vibration frequency;
- f) compressive force and compressive stress (central value plus larger and smaller values);
- g) compression stiffness;
- h) result of visual check;
- i) test date;
- j) plot of vertical force versus vertical displacement.

## 6.2.2 Compressive-shear test

### 6.2.2.1 Principle

A test piece is loaded with a constant compressive force and subjected to a shear displacement. Shear force, shear displacement, compressive force, and compressive displacement are measured. From the measured data, shear properties (shear stiffness and equivalent damping ratio) are determined.

The test as described in 6.2.2.2 to 6.2.2.7 shall be the type test and the routine test.

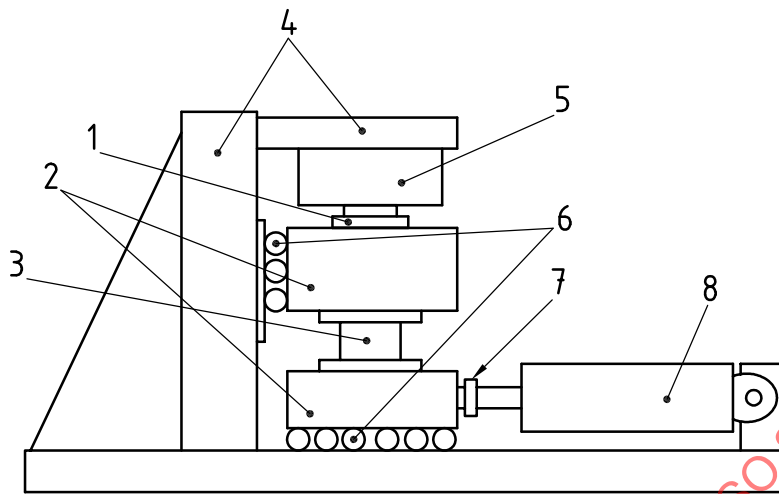
### 6.2.2.2 Test machine

The machines shown schematically in Figures 8 and 9 shall be capable of compressing and shearing the elastomeric isolator under controlled conditions. They shall also provide a method of measuring the compressive force, compressive displacement, shear force and shear displacement to an accuracy of less than or equal to 1 % of the maximum values recorded. The force calibration of the machine shall be based on ISO 7500-1. The machines shall maintain the parallelism of the upper and lower loading platens for the test piece attachment during the test. A Class 1 machine as defined in Clause 7 of ISO 7500-1:2004 is recommended.

It should be noted that during compression-shear testing, the test machine should keep the compressive force constant or within some tolerance which can be regarded as constant, despite test piece height change. Fixed compressive displacement equivalent to the required force might be allowed with the agreement of the structural engineer. The tolerance on the compressive force shall be set by the structural engineer in accordance with the requirements of the isolator and the structure.

The double-shear configuration, simultaneously testing two pieces, is acceptable provided the compression stiffnesses of the two isolators are within 20 % of each other, but it should be kept in mind that only the average performance can be measured in this configuration. Therefore, when the difference of the performance of the two test pieces cannot be ignored, tests with three mixed pairs using three isolators shall be done to determine the properties of each individual isolator.

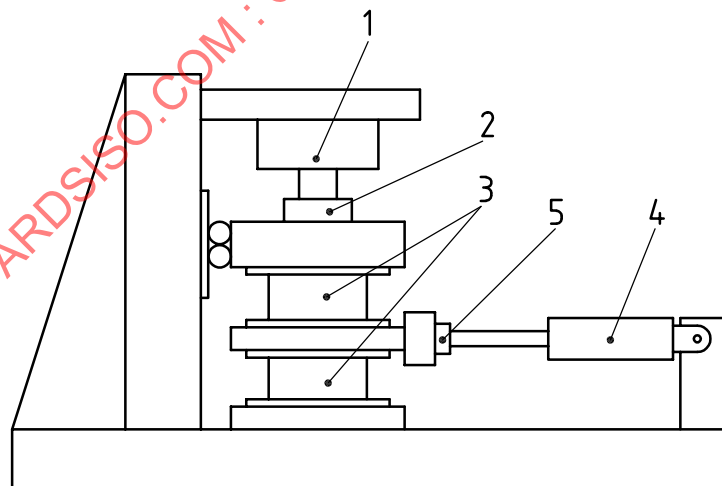
Fragment(s) of a test piece are likely to fly when a test piece fractures. Therefore, it is strongly recommended that a protective barrier be put into place in the shear load direction of the test piece. It is also strongly recommended that barriers, etc. be set up to prevent access to the test machine during a test.



**Key**

- 1 compression load cell
- 2 upper and lower platens
- 3 test piece
- 4 frame
- 5 actuator
- 6 bearing
- 7 shear force load cell
- 8 actuator

**Figure 8 — Compression-shear testing machine (single isolator)**



**Key**

- 1 actuator
- 2 compression load cell
- 3 test piece
- 4 actuator
- 5 shear force load cell

**Figure 9 — Compression-shear testing machine (double-shear configuration)**

**6.2.2.2.1 Force correction**

The inertia force of the machine in the shear direction shall be measured and corrected (see Annex B).

In a test machine that is structured so as to include the friction force of the sliding mechanism in the measured value of the test force, the friction force shall be measured separately beforehand and shall be corrected for at the time of calculation of the property values (see Annex C for friction force correction).

A load-cell-type sensor is recommended to measure the load force. This is because, when the test machine uses an internal pressure measuring type sensor that is influenced by the sliding resistance of an actuator, it is necessary to consider the effect of self-weight and calibrate the force in the direction of actual use. When the load cells are installed beneath test pieces, no correction of measured data by eliminating friction force and inertia force is required.

**6.2.2.3 Test piece**

As in 6.2.1.3.

**6.2.2.4 Test conditions****6.2.2.4.1 Test temperature**

As in 6.2.1.4.1.

**6.2.2.4.2 Conditioning time for a test piece**

As in 6.2.1.4.2.

**6.2.2.4.3 Compressive force**

Load the test piece with a compressive force that is equivalent to the design compressive stress or the pressure that has been agreed to by the structural engineer.

The fluctuation of the compressive force shall be within  $\pm 10\%$  during a test.

**6.2.2.4.4 Test shear strain amplitude**

The test shear strain amplitude shall be as defined in ISO 22762-2 or ISO 22762-3. The tolerance shall be within  $\pm 5\%$  of the target shear strain amplitude.

**6.2.2.4.5 Input wave**

The input wave shall be a sine wave or a triangular wave. If the shear properties are influenced by the input wave, it shall be selected with the agreement of both the structural engineer and the manufacturer.

**6.2.2.4.6 Test vibration frequency**

The standard test vibration frequency shall be between 0,001 Hz and the isolation frequency or 0,5 Hz. When any other frequency is used, it shall be selected with the agreement of both the structural engineer and the manufacturer.

### 6.2.2.5 Procedure

#### 6.2.2.5.1 Attachment of a test piece

The test piece shall be attached to the test machine by the same or a mechanically equivalent manner as in the actual application.

#### 6.2.2.5.2 Loading

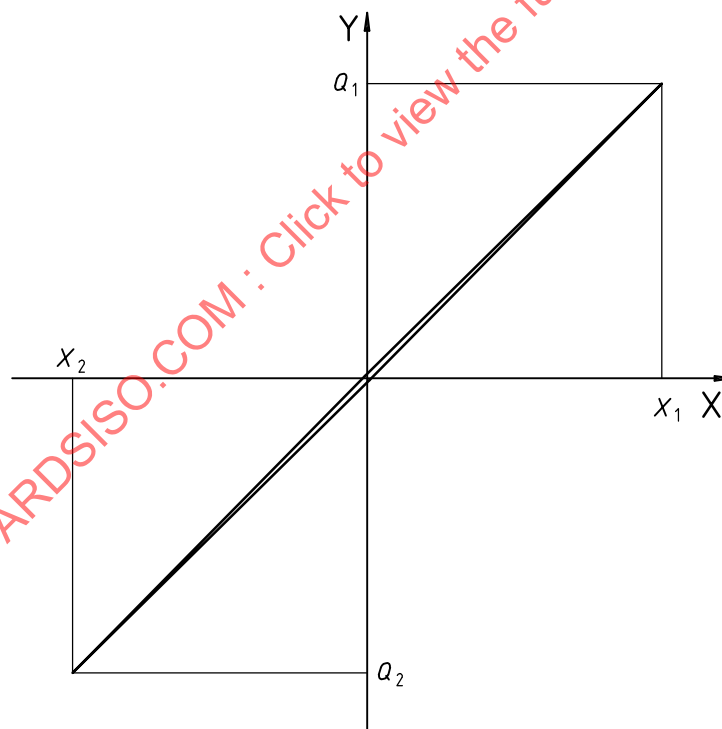
- a) Load the test piece with constant compressive force.
- b) Load the test piece with 3 cycles to 11 cycles of the reference shear displacement. The number of cycles shall be specified by the structural engineer.

#### 6.2.2.6 Expression of results

Shear properties of each test piece shall be determined by an appropriate method.

The following method describes how to obtain shear properties from one hysteresis loop. The structural engineer shall specify how the shear properties of the isolator are to be calculated. Generally, the third loop or the average of the second to the eleventh is used.

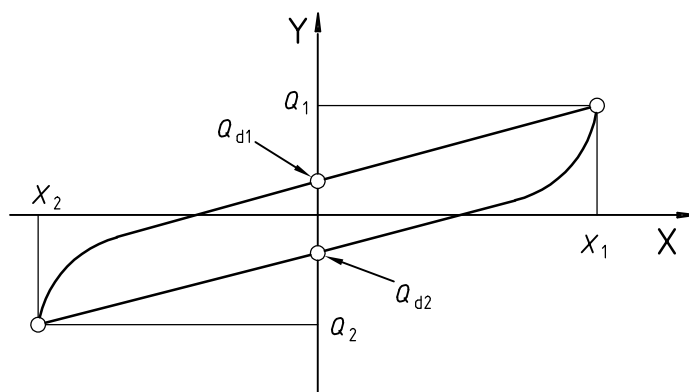
An example of a typical hysteresis loop of an LNR isolator is shown in Figure 10 and of an HDR isolator or an LRB isolator in Figure 11.



#### Key

- X shear displacement,  $X$   
 Y shear force,  $Q$

Figure 10 — Determination of shear stiffness for LNR

**Key**X shear displacement,  $X$ Y shear force,  $Q$  $\Delta W$  = area of hysteresis loop**Figure 11 — Determination of shear properties of LRB and HDR**

Shear stiffness  $K_h$ , equivalent damping ratio  $h_{eq}$ , post-yield stiffness  $K_d$ , and characteristic strength  $Q_d$  are given by the following expressions (for LRB,  $K_d$  and  $Q_d$  can alternatively be determined as shown in Annex F):

$$K_h = \frac{Q_1 - Q_2}{X_1 - X_2}$$

$$h_{eq} = \frac{2 \cdot \Delta W}{\pi \cdot K_h (X_1 - X_2)^2}$$

$$K_d = \frac{1}{2} \cdot \left( \frac{Q_1 - Q_{d1}}{X_1} + \frac{Q_2 - Q_{d2}}{X_2} \right)$$

$$Q_d = \frac{1}{2} \cdot (Q_{d1} - Q_{d2})$$

where

 $Q_1$  is the maximum shear force; $Q_2$  is the minimum shear force; $X_1$  is the maximum displacement  $X_1 = T_r \cdot \gamma$ ; $X_2$  is the minimum displacement  $X_2 = T_r \cdot (-\gamma)$ ; $Q_{d1}, Q_{d2}$  are the points where the loop crosses the shear-force axis, on the positive and the negative side, respectively; $\Delta W$  is the area enclosed by the hysteresis loop.**6.2.2.7 Test report**

The test report shall include the following items:

- a) the number of this part of ISO 22762;

- b) type and classification, shape and dimensions, first shape factor and second shape factor of test piece;
- c) name of test machine;
- d) test temperature;
- e) input wave and vibration frequency;
- f) direction of shear force applied to test piece;
- g) compressive force and shear displacement amplitude (or compressive stress and shear strain);
- h) essential parameters such as shear stiffness, equivalent damping ratio, method of determination (e.g. the third loop or the average of the second to the eleventh) and post-yield stiffness and characteristic strength in the case of LRB;
- i) test date;
- j) plot of shear force versus shear displacement (hysteresis loop).

Furthermore, the following items shall be recorded, if necessary:

- k) graph showing the relation between isolator height reduction and shear displacement;
- l) graph showing the relation between compressive force and shear displacement.

### 6.3 Various dependence tests

#### 6.3.1 Strain dependence of shear properties

##### 6.3.1.1 Principle

A test piece is attached to a compression-shear testing machine and subjected to a constant compressive force. In this state, the test piece is subjected to multiple levels of shear displacement. The shear force and the shear displacement are measured. By means of these measurements, the dependence of the shear properties on shear strain (shear stiffness and equivalent damping ratio) is determined.

##### 6.3.1.2 Test machine

As in 6.2.2.2.

##### 6.3.1.3 Test piece

As in 6.2.1.3.

##### 6.3.1.4 Test conditions

###### 6.3.1.4.1 Test temperature

As in 6.2.1.4.1.

###### 6.3.1.4.2 Conditioning time for test piece

As in 6.2.1.4.2.



**6.3.1.4.3 Compressive force**

As in 6.2.1.4.3.

**6.3.1.4.4 Test shear strain amplitudes**

Levels of shear strain shall be selected by the structural engineer in accordance with the specifications for elastomeric isolators.

The tolerance shall be within  $\pm 5\%$  of each shear strain amplitude value.

The sequence of shear loading shall be in the order of increasing strain, considering loading history dependency.

**6.3.1.4.5 Input wave**

As in 6.2.2.4.5.

**6.3.1.4.6 Test vibration frequency**

As in 6.2.2.4.6. The test vibration frequency of each shear strain level shall be the same.

**6.3.1.5 Procedure****6.3.1.5.1 Attachment of test piece**

The test piece shall be attached to a compression-shear testing machine as specified in 6.2.2.5.1.

**6.3.1.5.2 Loading**

- a) Subject the test piece to a compressive force that is equivalent to the design compressive stress  $\sigma_0$ .
- b) Load the test piece with shear displacements equivalent to each shear strain amplitude to be tested. Load the test piece in the order of increasing shear strain, in the number of cycles specified in 6.2.2.5.2 for each shear strain.

**6.3.1.6 Expression of results**

Using the method defined in 6.2.2.6, determine each property value for each test shear strain.

**6.3.1.7 Test report**

The test report shall include the following items:

- a) the number of this part of ISO 22762;
- b) type and classification, shape and dimensions, first shape factor and second shape factor of test piece;
- c) name of test machine;
- d) test temperature;
- e) input wave and vibration frequency;
- f) direction of shear force applied to test piece;

- g) compressive force and shear displacement (or compressive stress and shear strain);
- h) essential parameters such as shear stiffness, equivalent damping ratio, method of determination (e.g. the third loop or the average of the second to the eleventh);
- i) graph showing the relation between each property and shear strain;
- j) test date;
- k) plot of shear force versus shear displacement (hysteresis loop).

## **6.3.2 Compressive force dependence of shear properties**

### **6.3.2.1 Principle**

A test piece is attached to a compression-shear testing machine and subjected to multiple levels of constant compressive force. In this state, the test piece is subjected to shear displacement. The shear force, the shear displacement, the compressive force and the compressive displacement are measured. The shear properties, such as shear stiffness and equivalent damping ratio, are evaluated and their dependence on the compressive force (compressive stress) determined.

### **6.3.2.2 Test machine**

As in 6.2.2.2.

### **6.3.2.3 Test piece**

As in 6.2.1.3.

### **6.3.2.4 Test conditions**

#### **6.3.2.4.1 Test temperature**

As in 6.2.1.4.1.

#### **6.3.2.4.2 Conditioning time for test piece**

As in 6.2.1.4.2.

#### **6.3.2.4.3 Compressive force**

The levels of compressive force, and tensile force, if required, shall be selected by the structural engineer in accordance with the specifications for the isolator.

The tolerance shall be within  $\pm 5$  % of each compressive stress.

The fluctuation of the compressive force shall be within  $\pm 10$  % during a test.

#### **6.3.2.4.4 Test shear strain amplitude**

As in 6.2.2.4.4.

#### **6.3.2.4.5 Input wave**

As in 6.2.2.4.5.

**6.3.2.4.6 Test vibration frequency**

As in 6.2.2.4.6.

**6.3.2.5 Procedure****6.3.2.5.1 Attachment of test piece**

The test piece shall be attached to a compression-shear testing machine as specified in 6.2.2.5.1.

**6.3.2.5.2 Loading**

- a) Subject the test piece to the selected test compressive force. The test piece shall be loaded in increasing magnitude of test compressive force.
- b) At each test compressive force, load the test piece with 3 cycles or 11 cycles of shear displacement. The number of cycles shall be as specified by the structural engineer.

**6.3.2.6 Expression of results**

Using the method defined in 6.2.2.6, determine each property value for each test compressive stress.

**6.3.2.7 Test report**

The test report shall include the following items:

- a) the number of this part of ISO 22762;
- b) type and classification, shape and dimensions, first shape factor and second shape factor of test piece;
- c) name of test machine;
- d) test temperature;
- e) input wave and vibration frequency;
- f) direction of shear force applied to test piece;
- g) compressive force and shear displacement amplitude (or compressive stress and shear strain);
- h) essential parameters such as shear stiffness, equivalent damping ratio, method of determination (e.g. the third loop or the average of the second to the eleventh) at each compressive stress;
- i) graph showing relation between each property and compressive stress;
- j) test date;
- k) plot of shear force versus shear displacement (hysteresis loop).

Furthermore, the following items shall be recorded, if necessary:

- l) graph showing the relation between isolator height reduction and shear displacement;
- m) graph showing the fluctuation of the compressive force with shear displacement.

### 6.3.3 Frequency dependence of shear properties

#### 6.3.3.1 Principle

A test piece is attached to a compression-shear testing machine and subjected to constant compressive force. In this state, the test piece is subjected to shear displacement at multiple levels of frequencies. The shear force, the shear displacement, the compressive force and the compressive displacement are measured. The shear properties, such as shear stiffness and equivalent damping ratio, are evaluated and their dependence on the frequency determined.

The frequency test specified in 5.8.4.2 can be substituted for these tests, with the agreement of both the structural engineer and the manufacturer.

#### 6.3.3.2 Test machine

As in 6.2.2.2.

#### 6.3.3.3 Test piece

The test piece shall be as specified in ISO 22762-2 or ISO 22762-3.

#### 6.3.3.4 Test conditions

##### 6.3.3.4.1 Test temperature

As in 6.2.1.4.1.

##### 6.3.3.4.2 Conditioning time for test piece

As in 6.2.1.4.2.

##### 6.3.3.4.3 Compressive force

As in 6.2.2.4.3, except that no compressive force need be applied when a shear block test piece is used.

##### 6.3.3.4.4 Test shear strain amplitude

As in 6.2.2.4.4.

##### 6.3.3.4.5 Input wave

As in 6.2.2.4.5.

##### 6.3.3.4.6 Test vibration frequency

Several test vibration frequencies shall be selected from the seven levels shown in Table 12.

**Table 12 — Test frequencies**

Frequency, Hz	0,001	0,005	0,01	0,1	0,5	1,0	2,0
---------------	-------	-------	------	-----	-----	-----	-----

Testing at the design isolation-frequency may be added to the conditions.

### 6.3.3.5 Procedure

#### 6.3.3.5.1 Attachment of test piece

The test piece shall be attached to a compression-shear testing machine as specified in 6.2.2.5.1, except any suitable connection system is permitted when a shear block or standard test piece is used.

#### 6.3.3.5.2 Loading

- a) Subject the test piece to a compressive force, if required, that is equivalent to the design compressive stress  $\sigma_0$ , as defined in ISO 22762-2 or ISO 22762-3.
- b) Load the test piece for 3 cycles to 11 cycles of shear displacement amplitude, for each frequency selected in 6.3.3.4.6. The frequencies shall be applied in increasing order. The number of cycles shall be as specified by the structural engineer.

#### 6.3.3.6 Expression of results

Using the method defined in 6.2.2.6, determine each property value for each vibration frequency.

The rate of change of each property shall be determined as the ratio of each value to that at the reference frequency. The reference frequency shall be 0,5 Hz or the design isolation frequency.

#### 6.3.3.7 Test report

The test report shall include the following items:

- a) the number of this part of ISO 22762;
- b) type and classification, shape and dimensions, first shape factor and second shape factor of test piece;
- c) name of test machine;
- d) test temperature;
- e) input wave and vibration frequency;
- f) direction of shear force applied to test piece;
- g) compressive force and shear displacement (or compressive stress and shear strain);
- h) shear strain amplitude;
- i) essential parameters such as shear stiffness, equivalent damping ratio, method of determination (e.g. the third loop or the average of the second to the eleventh) at each frequency;
- j) graph showing relation between the rate of change of each property and the vibration frequency;
- k) plot of shear force versus shear displacement (hysteresis loop), if necessary;
- l) test date.

### **6.3.4 Repeated deformation dependence of shear properties**

#### **6.3.4.1 Principle**

A test piece is attached to a compression-shear testing machine and loaded with a constant compressive force. In this state, the test piece is subjected to shear displacement repeatedly 50 times. The shear force and the shear displacement are measured. The shear properties, such as shear stiffness and equivalent damping ratio, are evaluated and their dependence on the number of repetitions determined.

In order to differentiate between the change in properties due to temperature rise and that due to repeated deformation, the test piece is cooled down to the initial pre-load temperature after the repeated deformation of 50 times. The shear properties are then evaluated again.

#### **6.3.4.2 Test machine**

As in 6.2.2.2.

#### **6.3.4.3 Test piece**

As in 6.2.1.3.

#### **6.3.4.4 Test conditions**

##### **6.3.4.4.1 Test temperature**

As in 6.2.1.4.1.

##### **6.3.4.4.2 Conditioning time for test piece**

As in 6.2.1.4.2.

##### **6.3.4.4.3 Compressive force**

As in 6.2.2.4.3.

##### **6.3.4.4.4 Test shear strain amplitude**

As in 6.2.2.4.4.

##### **6.3.4.4.5 Input wave**

As in 6.2.2.4.5.

##### **6.3.4.4.6 Test vibration frequency**

As in 6.2.2.4.6.

#### **6.3.4.5 Procedure**

##### **6.3.4.5.1 Attachment of test piece**

The test piece shall be attached to a compression-shear testing machine as specified in 6.2.2.5.1.

#### 6.3.4.5.2 Loading

- a) Subject the test piece to a compressive force that is equivalent to the design compressive stress  $\sigma_0$ , as defined in ISO 22762-2 or ISO 22762-3.
- b) Load the test piece with 50 cycles of shear displacement.
- c) After completion of 50 cycles, cool the test piece down to the initial pre-load temperature. Then load the test piece again with 3 cycles or 11 cycles under the same conditions. The number of cycles shall be as specified by the structural engineer.

#### 6.3.4.6 Expression of results

Using the method defined in 6.2.2.6, determine each property value from the 1st, 3rd, 5th, 10th, 30th and 50th cycle. Determine the reference value of the property from the first 3 cycles or 11 cycles in accordance with 6.2.2. Determine the change in properties after the 50 cycles from the 3 cycles or 11 cycles of loading executed after the 50 cycles.

The change in each property shall be expressed as the ratio of each value to the reference value.

#### 6.3.4.7 Test report

The test report shall include the following items:

- a) the number of this part of ISO 22762;
- b) type and classification, shape and dimensions, first shape factor and second shape factor of test piece;
- c) name of test machine;
- d) test temperature;
- e) input wave and vibration frequency;
- f) direction of shear force applied to test piece;
- g) compressive force and shear displacement amplitude (or compressive stress and shear strain);
- h) properties, such as shear stiffness and equivalent damping ratio, at each cycle for which they were determined;
- i) change in each property with cycling;
- j) graph showing relation between the rate of change of each property and the number of repetitions;
- k) test date;
- l) plots of shear force versus shear displacement (hysteresis loop).

### 6.3.5 Temperature dependence of shear properties

#### 6.3.5.1 Principle

The test piece is attached to a compression-shear testing machine. The test piece is subjected to constant compressive force. In this state, the test piece is subjected to repeated shear displacement. The shear force and the shear displacement are measured. The shear properties, such as shear stiffness and equivalent damping ratio, are evaluated and their dependence on the change in environmental temperature determined.

The temperature test specified in 5.8.4.1 can be substituted for this test, except for lead rubber bearings, with the agreement of both the structural engineer and the manufacturer.

#### 6.3.5.2 Test machine

As in 6.2.2.2.

#### 6.3.5.3 Test piece

The test piece shall be as specified in ISO 22762-2 or ISO 22762-3.

#### 6.3.5.4 Test conditions

##### 6.3.5.4.1 Test temperature

The tests shall be conducted at the test temperatures defined in Table 13. The reference temperature shall be set at 23 °C. The tolerance shall be within  $\pm 2$  °C. Test temperatures shall at least cover the range of service requirements. When considering the test for a cold district, the test shall be conducted at a temperature lower than  $-20$  °C. Tests shall be conducted in order of decreasing temperature.

If the machine is not equipped with a suitable temperature-controlled chamber, the test piece shall have reached the test temperature in a separate chamber, and shall be transferred to the test machine sufficiently quickly for the test to be conducted while the outside of the bearing satisfies the temperature tolerance of  $\pm 2$  °C. The length of time for keeping a test piece at a specific temperature shall be less than that for crystallization nucleation.

**Table 13 — Test temperatures**

Temperature, °C	-20	-10	0	23	40
-----------------	-----	-----	---	----	----

NOTE Isolators fabricated from elastomer susceptible to low temperature crystallization may show an additional time-dependent stiffening if held for a prolonged period at low temperature.

##### 6.3.5.4.2 Conditioning time for test piece

The test piece shall be conditioned as specified in 6.2.1.4.2 in a temperature-controlled environment.

##### 6.3.5.4.3 Compressive force

As in 6.3.3.4.3.

##### 6.3.5.4.4 Test shear strain amplitude

As in 6.2.2.4.4.

##### 6.3.5.4.5 Input wave

As in 6.2.2.4.5.

##### 6.3.5.4.6 Test vibration frequency

As in 6.2.2.4.6.



### 6.3.5.5 Procedure

#### 6.3.5.5.1 Attachment of test piece

As in 6.3.3.5.1.

#### 6.3.5.5.2 Loading

Loading shall be as specified in 6.3.3.5.2.

### 6.3.5.6 Expression of results

The dependence of each property, determined using the method defined in 6.2.2.6, on the temperature shall be reported.

### 6.3.5.7 Test report

The test report shall include the following items:

- a) the number of this part of ISO 22762;
- b) type and classification, shape and dimensions, first shape factor and second shape factor of test piece;
- c) name of test machine;
- d) test temperature;
- e) input wave and vibration frequency;
- f) direction of shear force applied to test piece;
- g) compressive force and shear displacement amplitude (or compressive stress and shear strain);
- h) essential parameters such as shear stiffness, equivalent damping ratio, method of determination (e.g. the third loop or the average of the second to the eleventh) at each temperature;
- i) fractional change in each property relative to its value at the reference temperature;
- j) graph showing relation between the normalized value of each property and temperature;
- k) test date;
- l) plots of shear force versus shear displacement (hysteresis loop).

### 6.3.6 Dependence of compression properties on shear strain

#### 6.3.6.1 Principle

A test piece is subjected to shear displacement and to a compressive force. The compression stiffness is measured.

#### 6.3.6.2 Test machine

As in 6.2.2.2.

### 6.3.6.3 Test piece

The test piece shall be as specified in ISO 22762-2 or ISO 22762-3.

### 6.3.6.4 Test conditions

#### 6.3.6.4.1 Test temperature

As in 6.2.1.4.1.

#### 6.3.6.4.2 Conditioning time for test piece

As in 6.2.1.4.2.

#### 6.3.6.4.3 Compressive force

As in 6.2.2.4.3.

#### 6.3.6.4.4 Test shear strain

The test piece shall be subjected to constant shear displacement. The shear displacement shall have three levels of shear strain, to be chosen from Table 14 by the structural engineer.

$\gamma_0$  in Table 14 is the design shear strain defined in ISO 22762-2 or ISO 22762-3. The tolerance shall be within  $\pm 5\%$  of each shear strain.

Table 14 — Shear strains

Shear strain, %	0	$0,5\gamma_0$	$\gamma_0$	$1,5\gamma_0$
-----------------	---	---------------	------------	---------------

If  $1,5\gamma_0$  is larger than  $\gamma_{\max}$ ,  $\gamma_{\max}$  can be selected instead of  $1,5\gamma_0$ .

#### 6.3.6.4.5 Input wave

As in 6.2.1.4.4.

#### 6.3.6.4.6 Test vibration frequency

As in 6.2.1.4.5.

### 6.3.6.5 Procedure

#### 6.3.6.5.1 Attachment of test piece and compressive displacement gauges

As in 6.2.1.5.1.

#### 6.3.6.5.2 Loading

The loading process shall be the same as that chosen in 6.2.1.

- Load the test piece with a compressive force that is equivalent to the design compressive stress  $\sigma_0$ , as defined in ISO 22762-2 or ISO 22762-3.
- Subject the test piece to the required shear strain.

- c) Load the test piece with 3 cycles of compressive force as in 6.2.1.5.2.

#### 6.3.6.6 Expression of results

As in 6.2.1.6.

At each shear strain, determine the fractional change in compression stiffness relative to the stiffness at zero shear strain.

#### 6.3.6.7 Test report

The test report shall include the following items:

- a) the number of this part of ISO 22762;
- b) type and classification, shape and dimensions, first shape factor and second shape factor of test piece;
- c) name of test machine;
- d) test temperature;
- e) input wave and vibration frequency;
- f) compressive force and compressive stress (central value plus larger and smaller values) and shear displacement;
- g) compression stiffness;
- h) fractional change in compression stiffness relative to stiffness at zero shear strain;
- i) plot of fractional change in compression stiffness relative to stiffness at zero shear strain versus the shear strain;
- j) test date;
- k) plot of vertical force versus vertical displacement.

### 6.3.7 Dependence of compressive stiffness on compressive stress range

#### 6.3.7.1 Principle

A test piece is subjected to compression tests under three different loading conditions. The compressive stiffness is measured in each test, and the dependence of compressive stiffness on compressive force determined.

#### 6.3.7.2 Test machine

As in 6.2.2.2.

#### 6.3.7.3 Test piece

The test piece shall be as specified in ISO 22762-2 or ISO 22762-3.

#### 6.3.7.4 Test conditions

##### 6.3.7.4.1 Test temperature

As in 6.2.1.4.1.

##### 6.3.7.4.2 Conditioning time for test piece

As in 6.2.1.4.2.

##### 6.3.7.4.3 Loading conditions

The loading conditions shall be as shown in Table 15. The shear strain shall be maintained at zero during loading.

$\sigma_0$  in Table 15 is the design compressive stress, which corresponds to the design compressive force  $P_0$ , as defined in ISO 22762-2 or ISO 22762-3. The tolerance shall be within  $\pm 5\%$  of each stress.

**Table 15 — Loading conditions**

Compressive stress	$\sigma_0 \pm 0,3\sigma_0$	$\sigma_0 \pm 0,5\sigma_0$	$\sigma_0 \pm 1,0\sigma_0$
--------------------	----------------------------	----------------------------	----------------------------

##### 6.3.7.4.4 Input wave

As in 6.2.2.4.5.

##### 6.3.7.4.5 Test vibration frequency

As in 6.2.2.4.6.

#### 6.3.7.5 Procedure

##### 6.3.7.5.1 Attachment of test piece and compressive displacement gauges

As in 6.2.1.5.1.

##### 6.3.7.5.2 Loading

The loading process shall be the same as that chosen in 6.2.1.

Load the test piece for 3 cycles under the conditions specified in Table 15.

##### 6.3.7.6 Expression of results

As in 6.2.1.6.

Under each loading condition, determine the compression stiffness relative to the stiffness at  $\sigma_0 \pm 0,3\sigma_0$ .

#### 6.3.7.7 Test report

The test report shall include the following items:

- a) the number of this part of ISO 22762;

- b) type and classification, shape and dimensions, first shape factor and second shape factor of test piece;
- c) name of test machine;
- d) test temperature;
- e) input wave and vibration frequency;
- f) compressive force and compressive stress (central value plus larger and smaller values);
- g) compression stiffness;
- h) compressive stiffness relative to stiffness under the loading condition  $\sigma_0 \pm 0,3\sigma_0$ ;
- i) test date;
- j) plot of vertical force versus vertical displacement under each loading condition.

## 6.4 Ultimate shear properties

### 6.4.1 Principle

This test establishes the shear displacement capacity of the isolator under the maximum design compressive force. For isolators located by dowels or recesses, and for bolted isolators subjected to tensile loads, the shear displacement capacity is also measured at the minimum design compressive force. A test piece is attached to a compression-shear testing machine and subjected to the required constant compressive force. Under this load, the test piece is subjected to unidirectional shear displacement until failure occurs, or until the specified displacement is reached. Failure is defined as breaking or buckling in the case of bolted bearings, or as the onset of roll-out in the case of recessed or dowelled bearings. The specified displacement, or the displacement at failure if this occurs before the specified displacement is reached, and the maximum shear force are recorded.

### 6.4.2 Test machine

As in 6.2.2.2.

### 6.4.3 Test piece

The test piece shall be as specified in ISO 22762-2 or ISO 22762-3. If tests at both maximum and minimum vertical loads are required, the same test piece may be used for the second test provided that no signs of failure are apparent in the first test.

### 6.4.4 Test conditions

#### 6.4.4.1 Test temperature

As in 6.2.1.4.1.

#### 6.4.4.2 Conditioning time for test piece

As in 6.2.1.4.2.

## 6.4.5 Procedure

### 6.4.5.1 Attachment of test piece

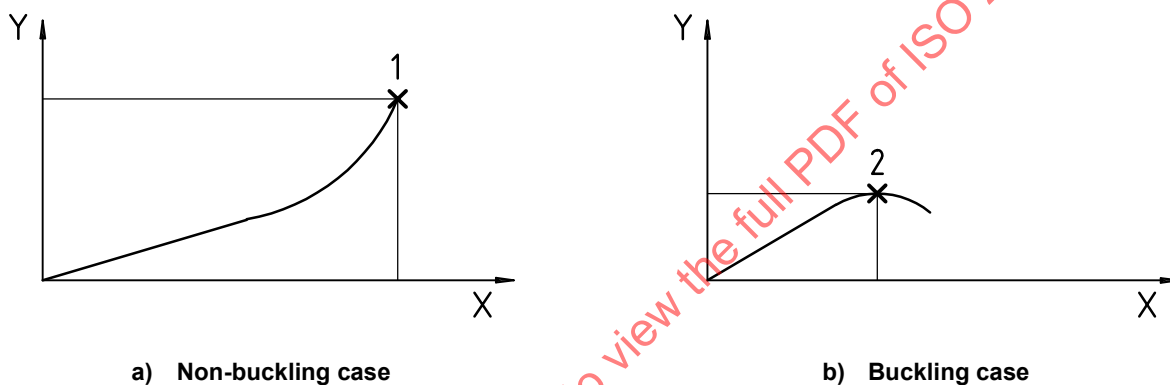
The test piece shall be attached to a compression-shear testing machine as specified in 6.2.2.5.1.

### 6.4.5.2 Loading

- Subject the test piece to the required compressive or tensile force, as defined in ISO 22762-2 or ISO 22762-3.
- Subject the test piece to unidirectional shear deformation at a constant speed until breaking, buckling or roll-out of the test piece occurs, or until the specified displacement is achieved.

## 6.4.6 Expression of results

Typical force-displacement curves for two types of bolted bearings are shown in Figure 12.



### Key

- X shear displacement
- Y shear force
- 1 breaking point
- 2 buckling point

**Figure 12 — Ultimate shear properties**

At the time of breaking, the displacement and the shear force shall be determined as the shear displacement at break  $X_b$  and the shear force at break  $Q_b$ , respectively.

When buckling occurs, the displacement and the shear force shall be determined as the shear displacement at buckling  $X_{buk}$  and the shear force at buckling  $Q_{buk}$ , respectively.

If roll-out occurs with dowelled or recessed bearings, the displacement and shear force at the onset of roll-out shall be recorded.

If the test is stopped before obvious failure, the bearing shall be held at the maximum displacement and examined for signs of failure (with caution!). The shear force and displacement at the point the test is stopped shall define the ultimate shearing capacity, provided there are no significant signs of failure and the force-displacement curve has been increasing monotonically up to that displacement.

## 6.4.7 Test report

The test report shall include the following items:

- a) the number of this part of ISO 22762;
- b) type and classification, shape and dimensions, first shape factor and second shape factor of test piece;
- c) name of test machine;
- d) test temperature;
- e) shear speed;
- f) direction of shear force applied to test piece;
- g) compressive force (compressive stress);
- h) when breaking occurs:
  - the breaking shear displacement (shear strain) and breaking shear force,
  - when buckling occurs:
    - the buckling failure shear displacement (shear strain) and buckling failure shear force,
    - when roll-out occurs:
      - the roll-out shear displacement (shear strain) and roll-out force,
      - when test is stopped without any failure:
        - the final displacement (shear strain) and final shear force;
  - i) result of visual examination;
  - j) test date;
  - k) plots of shear force versus shear displacement (ultimate shear properties).

## 6.5 Tensile testing

### 6.5.1 Principle

A test piece is attached to a tensile shear test machine, subjected to a constant shear displacement and loaded with tensile force until plastic deformation or fracture occurs. The tensile force, tensile displacement, shear force and shear displacement are measured. The tensile force and the shear displacement of the test piece at yield or fracture are determined.

### 6.5.2 Test machine

The machine shall be capable of drawing and shearing the elastomeric isolator under controlled conditions. It shall also provide a method of measuring the tensile force, tensile displacement, shear force and shear displacement to an accuracy of better than or equal to 1 % of the maximum values recorded. The force calibration of the machine shall be based on ISO 7500-1. The machine shall maintain the parallelism of the upper and lower loading platens for the test piece attachment during the test. A Class 1 machine as defined in Clause 7 of ISO 7500-1:2004 is recommended.

During tensile shear testing, the test machine should keep the shear displacement constant.

In order to measure the tensile displacement of the test piece accurately, place two or more tensile displacement gauges uniformly around the test piece (so that they are at the same distance from the test

piece as shown in Figure 5). The average data from these sensors shall be taken as the measurement value. Generally, tensile displacement is much larger than compressive displacement, so the displacement gauges should be selected carefully.

For tests at non-zero shear displacement, the use of the double-shear configuration is permitted as specified in 6.2.2.2.

Fragments of test piece are likely to fly when a test piece fractures. Therefore, it is strongly recommended that a protective barrier be put into place in the direction of the shear load on the test piece. It is also strongly recommended that barriers, etc., be set up to prevent access to the test machine during a test.

### 6.5.3 Test piece

As in 6.2.1.3.

### 6.5.4 Test conditions

#### 6.5.4.1 Test temperature

As in 6.2.1.4.1.

#### 6.5.4.2 Conditioning time for test piece

As in 6.2.1.4.2.

#### 6.5.4.3 Test shear strain

The test shear strain shall be zero or one selected from Table 6. The tolerance shall be within  $\pm 5\%$ .

#### 6.5.4.4 Test speed

The test speed shall be selected with the agreement of both the structural engineer and the manufacturer. The tensile loading speed should be slow enough to ensure safety during the test.

### 6.5.5 Procedure

#### 6.5.5.1 Attachment of test piece

The test piece shall be attached to the test machine by the same or a mechanically equivalent manner as in the actual application. Shear keys should be set between the test piece and test machine in order to transmit the shear force, and the test piece should be fastened to the test machine by enough bolts in order to transmit the tensile force.

#### 6.5.5.2 Loading

- a) Apply the prescribed shear strain to the test piece.
- b) Apply the tensile force specified in ISO 22762-2 or ISO 22762-3 to the test piece, or load it until failure is observed.

### 6.5.6 Expression of results

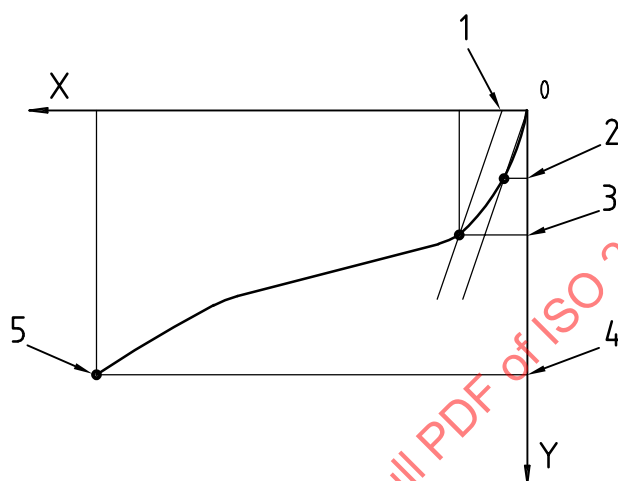
The tensile force at break shall be recorded. Otherwise it shall be recorded that no obvious signs of failure were observed at the maximum applied tensile force.

An example of a typical tensile force-displacement curve is shown in Figure 13.



The yield force shall be determined as follows:

- Draw a line through the origin and the point on the curve where the force at the point coincides with the shear modulus  $G$  (under design compressive stress and design shear strain).
- Offset the line for 1 % of the total rubber thickness.
- The force at the point where the offset line and force-displacement curve cross is defined as the yield force.



#### Key

- X tensile displacement
- Y tensile force
- 1 displacement corresponding to 1 % of total rubber thickness
- 2 force corresponding to shear modulus,  $G$
- 3 tensile yield force,  $P_{Ty}$
- 4 tensile break force,  $P_{Tb}$
- 5 break

**Figure 13 — Typical force-displacement curve from tensile test**

#### 6.5.7 Test report

The test report shall include the following items:

- the number of this part of ISO 22762;
- type and classification, shape and dimensions, first shape factor and second shape factor of test piece;
- name of test machine;
- test temperature;
- test speed;
- shear displacement (if any);
- tensile yield force  $P_{Ty}$  or tensile break force  $P_{Tb}$ ;
- test date;
- tensile force-displacement curve.

## 6.6 Durability testing

### 6.6.1 Degradation test

#### 6.6.1.1 Principle

The test piece for this test is an isolator or a rubber test piece. The test piece is aged for a given period of time at a specified temperature. After ageing, the shear properties (shear stiffness and equivalent damping ratio) and ultimate shear properties are measured. By evaluating the change during ageing as a percentage of the value before ageing, the resistance of the elastomeric isolator to thermal degradation can be assessed.

#### 6.6.1.2 Test machine

##### 6.6.1.2.1 Air ageing oven

An air ageing oven or similar device with an automatic thermo-regulator shall be used for ageing of the test piece. The temperature inside the oven shall be maintained so that the temperature of the test piece in the oven is within  $\pm 2$  °C of the preset temperature.

##### 6.6.1.2.2 Compression-shear testing machine

As in 6.2.2.2.

#### 6.6.1.3 Test piece

An isolator test piece as defined in ISO 22762-2 or ISO 22762-3 or a rubber test piece as defined in 5.8.3 shall be used.

The change in the dynamic shear properties may be determined using a single test piece tested before and after ageing.

Because of the variability in ultimate properties, the degradation of ultimate shear properties may be determined using three pairs of test pieces prepared from the same lot of material. From each pair, one is tested before ageing and one after ageing.

#### 6.6.1.4 Test conditions

Based on the ageing conditions defined in Annex A, the temperature and time shall be selected so that, when converted to 23 °C, the time corresponds to 60 years or the period specified by the structural engineer.

The ageing temperature shall be 80 °C or lower.

#### 6.6.1.5 Procedure

The initial properties of an isolator test piece shall be determined as specified in 6.2.2 (compressive-shear test) and 6.3 (ultimate shear properties) and the initial properties of a rubber test piece shall be determined as specified in 5.8 and 5.9; for the former, the test shear strain amplitude shall be that specified in 6.2.2, and for the latter the test temperature and frequency shall be that used for the tests in 5.8. Then the test piece shall be placed in the oven and aged under the conditions specified in 6.6.1.4. If a rubber test piece is used, the ageing conditions shall be anaerobic (see Clause A.2).

After the test piece has been subjected to ageing for the specified time, it shall be taken out from the air ageing oven and cooled for 24 h or more. It shall be conditioned as specified in 6.2.1.4.2. The properties after ageing shall be determined in the same way as the initial properties.

#### 6.6.1.6 Expression of results

The percentage change in the shear properties and ultimate shear properties is calculated from the following equation:

$$A_C = \frac{B_1 - B_0}{B_0} \times 100$$

where

$A_C$  is percentage change in the measured value before ageing with respect to the measured value after ageing;

$B_0$  is the measured value before ageing;

$B_1$  is the measured value after ageing.

#### 6.6.1.7 Test report

The test report shall include the following items:

- a) the number of this part of ISO 22762;
- b) percentage change in shear properties and ultimate shear properties;
- c) for isolator test pieces, type and classification, shape and dimensions, first shape factor and second shape factor of test piece;  
for rubber test pieces, type and dimensions, and method used to ensure anaerobic ageing;
- d) ageing temperature and ageing time/estimated years at 23 °C;
- e) activation energy;
- f) other information, if necessary.

### 6.6.2 Creep test

#### 6.6.2.1 Principle

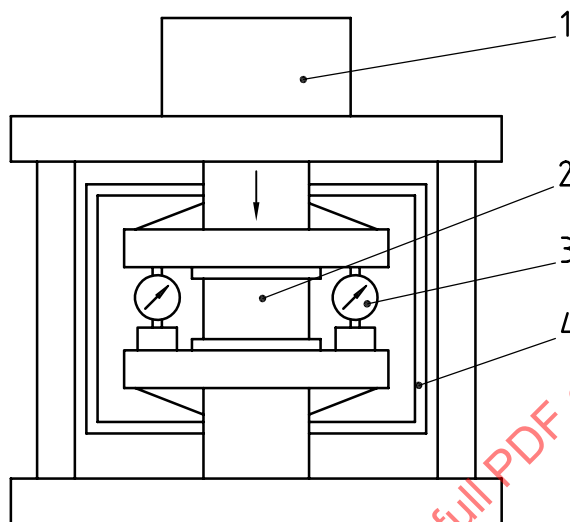
A test piece is subjected to a constant compressive force without shear displacement. During a specified length of time, the compressive displacement is measured at intervals. By measuring the change in the compressive displacement, the creep of the elastomeric isolator after many years of use can be estimated.

#### 6.6.2.2 Test machine

- a) The machine shall be capable of applying a constant compressive force to the test piece for up to several weeks, and of measuring the compression displacement of the test piece. The compressive force shall be within  $\pm 5\%$  of the preset value. The fluctuation of the compressive force during a test shall be within  $\pm 5\%$  of the preset value.
- b) The machine shall maintain the parallelism of the upper and lower loading platens for the test piece attachment during the test.
- c) The compressive force shall be applied by a dead weight or another suitable device.

- d) The machine should preferably control the temperature of the test piece; if not, the surface temperature of the test piece shall be measured in order to be able to correct for the height change caused by temperature fluctuations.
- e) The displacement gauges used to measure the compression displacement shall be capable of measuring to the nearest 0,01 mm.

An example of a creep testing machine is shown in Figure 14.



**Key**

- 1 loading device (hydraulic, pneumatic, dead weight type, etc.)
- 2 test piece
- 3 displacement gauge
- 4 thermostat

**Figure 14 — Example of a creep testing machine**

**6.6.2.3 Test piece**

The test piece shall be as specified in ISO 22762-2 or ISO 22762-3.

**6.6.2.4 Test conditions**

**6.6.2.4.1 Test temperature**

The test shall be conducted at  $23\text{ °C} \pm 2\text{ °C}$ .

**6.6.2.4.2 Conditioning time for test piece**

As in 6.2.1.4.2.

**6.6.2.4.3 Compressive force**

As in 6.2.2.4.3.

#### 6.6.2.4.4 Total measurement time and measurement intervals

- a) The total measurement time shall be 1 000 h or longer. The measurement time should be as long as possible to reduce uncertainty in the constants in the creep equation [see 6.6.2.6 e)].
- b) Measurements shall be made at equal intervals at a minimum of 10 points in each time span of  $10^0$  h to  $10^1$  h,  $10^1$  h to  $10^2$  h, and  $10^2$  h to  $10^3$  h.

#### 6.6.2.5 Procedure

##### 6.6.2.5.1 Attachment of test piece and compressive displacement gauges

As specified in 6.2.1.5.1.

##### 6.6.2.5.2 Loading

- a) Subject the test piece to a compressive force that is equivalent to the design compressive stress  $\sigma_0$ , as defined in ISO 22762-2 or ISO 22762-3. The loading time shall be less than 1 min.
- b) The compressive displacement about 1 min after the compressive force reaches the preset value shall be taken as the zero point. The compressive displacement and the surface temperature of the test piece shall be measured at the time intervals defined in 6.6.2.4.4 b). The compressive displacement shall be measured at two or more positions which are symmetrical in relation to the centre of the test piece. The compression displacement shall be taken as the average of the values obtained from the displacement gauges used.

##### 6.6.2.6 Expression of results

- a) When the test is not conducted at  $23\text{ °C} \pm 2\text{ °C}$ , the change in vertical displacement from the zero point at each measurement time shall be converted to the  $23\text{ °C}$  state by the following equation. The coefficient of linear expansion  $\alpha$  in the vertical direction of the test piece in this equation is obtained by the method shown in Annex D, Clause D.6.

$$\Delta H_{23} = \Delta H_T + n \cdot t_r (T - 23) \alpha$$

where

$\Delta H_{23}$  is the change in vertical displacement at  $23\text{ °C}$ ;

$\Delta H_T$  is the change in vertical displacement at  $T\text{ °C}$ ;

$T$  is the surface temperature of the test piece ( $\text{°C}$ );

$\alpha$  is the coefficient of linear thermal expansion ( $T\text{ °C}$  to  $23\text{ °C}$ ).

- b) The creep strain at each measurement time is calculated by the following equation:

$$\varepsilon_{\text{cr}} = \frac{\Delta H_{23}}{n \cdot t_r} \times 100$$

where  $\varepsilon_{\text{cr}}$  is the creep strain at  $23\text{ °C}$  (%).

- c) The relation between the creep strain and time obtained in accordance with b) shall be plotted as a logarithmic graph. An example is shown in Figure 15.

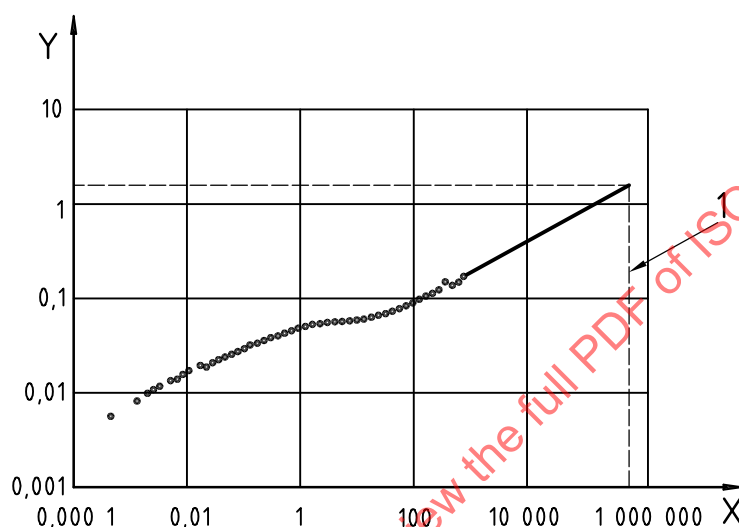
- d) Using the least-squares method and the data for time = 100 h to time = 1 000 h, linear regression can be performed on the logarithmic plot. From this regression line, coefficients  $a$  and  $b$  in the following equation are obtained:

$$\log_{10} \varepsilon_{cr} = \log_{10} a + b \log_{10} t$$

where  $t$  is time.

- e) The estimate of the creep at time  $t$  shall be obtained from the following equation:

$$\varepsilon_{cr} = a \cdot t^b$$



#### Key

- X elapsed time (h)  
Y compression creep strain (%)  
1 60 years

Figure 15 — Example of creep curve

#### 6.6.2.7 Test report

The test report shall include the following items:

- the number of this part of ISO 22762;
- measurement date;
- drawing of test piece;
- brief description of test machine;
- compressive force (compressive stress);
- graph showing relation between surface temperature of test piece and time;
- log-log graph showing relation between creep strain and time;
- estimated creep strain at specified time  $t$ ;
- other information, if necessary.

### 6.6.3 Fatigue test

#### 6.6.3.1 Principle

A test piece is subjected to a specified shear displacement, which may be zero, and then loaded with a cyclic compressive force. The change in appearance and properties is determined in order to evaluate the fatigue resistance of the elastomeric isolator.

#### 6.6.3.2 Test machine

- a) The machine shall be capable of applying a constant shear displacement and rapidly repeating compressive force to the test piece for a long period of time. Both the shear displacement and the compressive force shall remain within  $\pm 5\%$  of the preset value.
- b) The machine shall maintain the parallelism of the upper and lower loading platens for the test piece attachment during the test.

#### 6.6.3.3 Test piece

As in 6.2.1.3.

#### 6.6.3.4 Test conditions

##### 6.6.3.4.1 Test temperature

As in 6.2.1.4.1.

##### 6.6.3.4.2 Conditioning time for a test piece

As in 6.2.1.4.2.

##### 6.6.3.4.3 Compressive force

The compressive force shall be applied cyclically from the maximum force to the minimum force. The maximum force corresponds to the specified maximum compressive stress, and the minimum force corresponds to the specified minimum compressive stress. The structural engineer shall specify both stresses.

**NOTE** The maximum and minimum compressive stresses in this test represent the range of traffic-induced loads amplified to accelerate the test.

The test shall be carried out for 2 000 000 compression cycles or as agreed by the structural engineer and manufacturer.

##### 6.6.3.4.4 Test shear strain

The shear deformation shall be constant during this test. A constant shear displacement selected by the structural engineer and representing a typical non-seismic value may be selected.

##### 6.6.3.4.5 Input wave

The input wave of repeated compressive stress shall be a sine wave or a triangular wave.

##### 6.6.3.4.6 Test vibration frequency

The frequency shall be agreed by both the structural engineer and the manufacturer. Generally, the test frequency is between 2 Hz and 5 Hz.

#### 6.6.3.5 Procedure

##### 6.6.3.5.1 Attachment of test piece

The test piece shall be attached to a compression-shear test machine as specified in 6.2.2.5.1.

##### 6.6.3.5.2 Loading

- a) First load the test piece with a compressive force equal to either the maximum or minimum specified force. Next subject the test piece to the specified constant shear displacement. Then apply the cyclic compressive stress.
- b) In order to evaluate the change in properties, measurement of the compressive stiffness and shear properties, and a visual inspection, shall be carried out before and after fatigue loading at 500 000 cycles, 1 000 000 cycles, 1 500 000 cycles, 2 000 000 cycles and at other numbers of cycles agreed by both the structural engineer and the manufacturer.
- c) The compressive stiffness and shear properties shall be measured in accordance with the methods given in 6.2.1 and 6.2.2, respectively.

##### 6.6.3.6 Expression of result

- a) All basic properties shall be determined in accordance with the methods defined in 6.2.1.6 and 6.2.2.6. The change in each property shall be determined as the ratio of the value after fatigue loading to that measured before fatigue loading.
- b) The test piece shall be checked at each round of testing for the presence of cracks and other imperfections.

##### 6.6.3.7 Test report

The test report shall include the following items:

- a) the number of this part of ISO 22762;
- b) type and classification, shape and dimensions, first shape factor and second shape factor of test piece;
- c) name of test machine;
- d) test temperature;
- e) input wave and vibration frequency;
- f) direction of shear force applied to test piece;
- g) static compressive stress and amplitude of cyclic compressive stress and shear strain (if any) applied;
- h) properties such as compressive stiffness, shear stiffness and equivalent damping ratio at each number of cycles testing was carried out;
- i) fractional change in each property;
- j) graph showing relation between the fractional change in each property and the number of fatigue cycles;
- k) test date;
- l) plots of shear force versus shear displacement (hysteresis loop).



## 6.7 Reaction force due to low-rate deformation

### 6.7.1 Principle

This test is used to determine the reaction force in an isolator caused by very-low-rate deformation (to be specified by the structural engineer, e.g. 0,003 %/s), such as elongation or shrinkage of a bridge girder due to changes in temperature.

#### a) Extrapolation method

The reaction force caused by very-low-rate deformation can be estimated by extrapolation using the values of shear stiffness at several low rates of loading.

The test piece is subjected to the specified compressive force, and also to three or more levels of shear deformation corresponding to the specified strain amplitudes at a rate of 5,0 %/s or slower. The shear elastic modulus is then measured. Extrapolation is carried out to obtain the shear elastic modulus for a rate lower than 0,003 %/s.

#### b) Stress relaxation method

For ordinary test machines which cannot produce shear deformation at very low rates, the reaction force produced by very-low-rate deformation can be estimated by measuring the shear stress after relaxation for a specified period of time. When the specified time is a day (24 h), a practical method is as follows.

The elastomeric isolator is subjected to the specified compressive force, and also to a shear deformation which is 1/4 of the specified strain amplitude at the normal rate. The strain is maintained for 1,5 h. Next, the shear strain is increased by another 1/4 of the specified strain amplitude, and maintained for another 1,5 h. This process is repeated until the shear strain reaches the specified strain, giving a total of 6 h. The shear stress is measured at the end of each 1,5 h period. The relation between the shear force and the shear displacement is determined from the four values obtained (plus zero).

### 6.7.2 Test machine

The compression-shear testing machine specified in 6.2.2.2 shall be used.

For the extrapolation method, the test machine shall be capable of a range of displacement rates covering at least 0,01 mm/s to 50 mm/s.

For the stress relaxation method, the machine shall be capable of maintaining the specified strain for 1,5 h and measuring the stress at 1,5 h intervals.

### 6.7.3 Test piece

As in 6.2.1.3.

### 6.7.4 Test conditions

#### 6.7.4.1 Test temperature

As in 6.2.1.4.1.

#### 6.7.4.2 Conditioning time for test piece

As in 6.2.1.4.2.

### 6.7.4.3 Compressive force

A test piece shall be loaded with a compressive force that is equivalent to the design compressive stress or a pressure that has been selected with the agreement of both the structural engineer and the manufacturer.

The fluctuation of the compressive force shall be within  $\pm 10\%$  during a test.

### 6.7.4.4 Test shear strain

The test shear strain shall be decided by the structural engineer. For example, 50 % may be selected for the extrapolation method, and a set comprising 12,5 %, 25 %, 37,5 % and 50 % may be selected for the stress relaxation method.

### 6.7.5 Procedure

#### 6.7.5.1 Attachment of test piece

The test piece shall be attached to the compression-shear test machine as specified in 6.2.2.5.1.

#### 6.7.5.2 Loading

##### 6.7.5.2.1 General

The loading rate shall be selected with the agreement of both the structural engineer and the manufacturer.

The following examples are provided for reference:

For the extrapolation method: 0,02 mm/s, 0,05 mm/s, 0,1 mm/s, 0,5 mm/s, 1 mm/s, 5 mm/s, 10 mm/s and 50 mm/s.

For the stress relaxation method: 1 mm/s.

##### 6.7.5.2.2 Extrapolation method

Subject the test piece to the specified compressive force. Then apply the specified shear strain for three loading/unloading cycles at each specified loading rate. From the third loading cycle, calculate the shear stiffness as the ratio between the maximum force and the maximum displacement.

##### 6.7.5.2.3 Stress relaxation method (example)

Subject the test piece to the specified compressive force. Then apply 12,5 % shear strain at a speed of 1 mm/s. Maintain the strain for 1,5 h. After 1,5 h, subject the test piece to 25 % strain for 1,5 h. Continue this procedure for shear strains of 37,5 % and 50 %. Measure the shear force after 1,5 h at each shear strain.

### 6.7.6 Expression of result

Convert the measured shear stiffness or shear force to the shear modulus using the applicable equation of the two given below:

$$G_s = \frac{K_h \cdot T_r}{A_{load}}$$

$$G_s = \frac{Q \cdot T_r}{A_{load} \cdot X}$$

where

$G_s$  is the shear modulus at low-rate deformation;

$K_h$  is the shear stiffness obtained from the hysteresis loop of the third cycle at each loading rate;

$Q$  is the shear force after stress relaxation at each strain;

$X$  is the shear displacement at each strain;

$T_r$  is the total thickness of the rubber.

#### 6.7.7 Test report

The test report shall include the following items:

- a) the number of this part of ISO 22762;
- b) type and classification, shape and dimensions, first shape factor and second shape factor of test piece;
- c) name of test machine;
- d) test temperature;
- e) test date;
- f) compressive force (compressive stress);
- g) drawing of test piece;
- h) test method;
- i) shear force-deflection curve or shear stiffness at low-rate deformation;
- j) details of any additional requirements.

## Annex A (normative)

### Determination of accelerated ageing conditions equivalent to expected life at 23 °C

#### A.1 Scope

This annex is based on the method given in ISO 11346, and specifies the determination of the ageing conditions equivalent to the expected life at 23 °C.

#### A.2 Test conditions

Tests shall be carried out at a minimum of three ageing temperatures up to 80 °C and for a minimum of four periods of ageing at each test temperature. Test conditions are only acceptable if accurately observable changes in properties are produced.

For the inner rubber, ageing shall be conducted under anaerobic conditions such as those produced by the following two methods:

- a) using a test piece cut out from a rubber block aged in air;
- b) shielding the test piece from the air by wrapping it in metal foil.

**NOTE** Methods such as replacing the air in the ageing oven by nitrogen gas or applying a vacuum are not recommended because volatile compounding ingredients will be lost.

#### A.3 Test method

After ageing in accordance with Clause A.2, the 100 % shear modulus and shear failure strain shall be measured by the methods defined in 5.8 and 5.9 or, optionally, tensile properties (tensile strength, elongation at break, 100 % modulus) may be measured by the methods specified in ISO 37.

#### A.4 Calculation method

**A.4.1** As shown in Figure A.1, for each property under evaluation (100 % shear modulus, shear failure strain, tensile strength, elongation at break and 100 % modulus), draw a graph to show the relation between ageing time and the decrease in a material property.

**A.4.2** Use this graph to obtain, for each ageing temperature, the ageing time required for a specified decrease in the property.

**A.4.3** As shown in Figure A.2, make an Arrhenius plot with the inverse of ageing temperature (absolute temperature) on the X-axis and the natural logarithm of the ageing time obtained from A.4.2 on the Y-axis. This plot shall be made for each property under evaluation.

**A.4.4** Fit a straight line to the points plotted on the Arrhenius plot, and determine the activation energy from the gradient

$$E_a/R$$

where

$E_a$  is the activation energy, in J/mol;

$R$  is the gas constant [8,314 J/(mol·K)].

**A.4.5** From the activation energies obtained in A.4.4 for each property, use the lowest activation energy to calculate the ageing conditions. The lowest activation energy is chosen for safety reasons.

Use the following equation to determine the ageing conditions that correspond to the expected life at 23 °C:

$$\ln(t_y) = -\frac{E_a}{R \left( \frac{1}{T_y} - \frac{1}{T_0} \right)} + \ln(t)$$

where

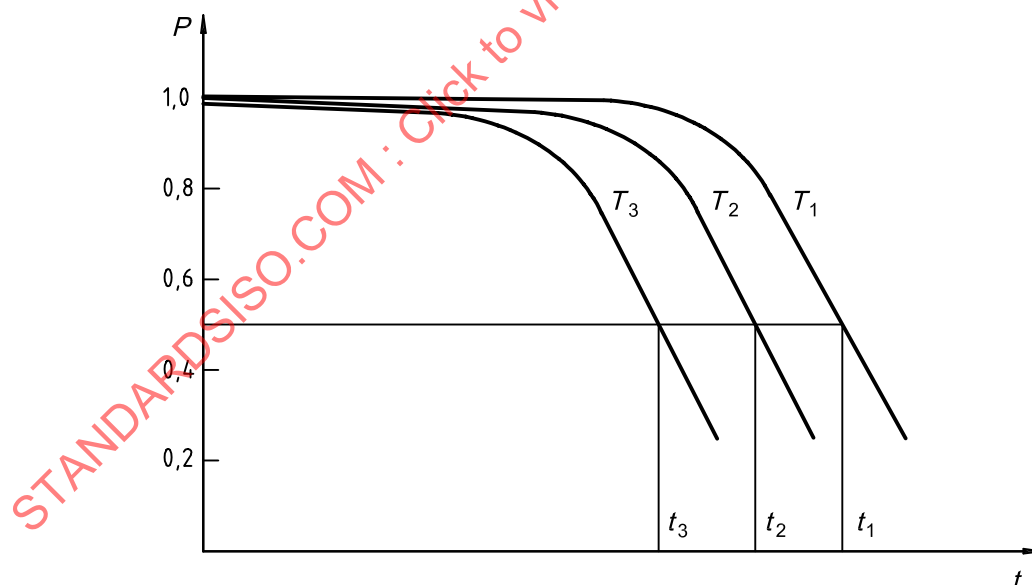
$T_0$  is 23 °C (= 296 K);

$T_y$  is the ageing temperature;

$t$  is the expected life at 23 °C;

$t_y$  is the ageing time.

Figures A.1 and A.2 correspond to Figures 1 and 2 in ISO 11346:2004.



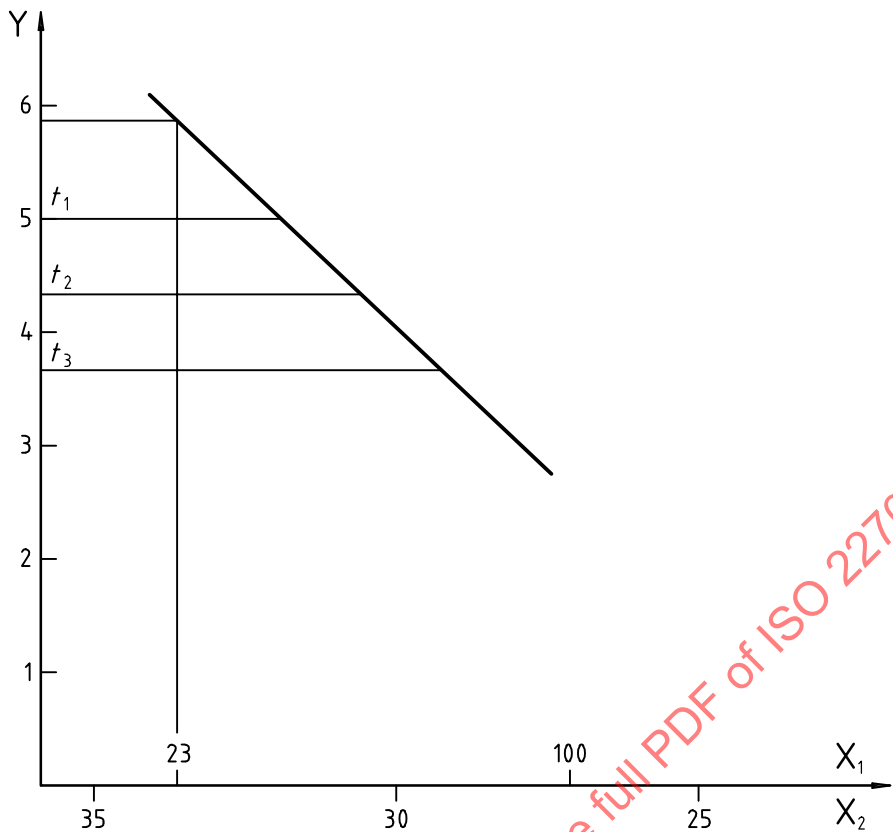
**Key**

$P$  value of property (as a fraction of initial value)

$t$  time

$T$  temperature

**Figure A.1 — Change in property against time**



**Key**  
X<sub>1</sub> temperature,  $T$  (°C)  
X<sub>2</sub>  $\frac{1}{T} \times 10^4$  ( $T$  in kelvins)  
Y time,  $t$

Figure A.2 — Arrhenius plot (time against temperature)

## Annex B (normative)

### Inertia force correction

#### B.1 Principle

During the determination of the properties of an elastomeric isolator, a high-speed load is applied, and an inertia force is generated. The inertia force is equal to the product of the mass of the moving components of the test machine (excluding the test piece) and the acceleration of these components. If the load cell is attached to the actuator (as in Figure B.1), this inertia force is recorded together with the actual shear force. The total force is considered as the apparent shear force.

The method specified in this annex measures the inertia force of the moving components (excluding the test piece). Then, this value is subtracted from the apparent shear force to obtain the true shear value.

#### B.2 Measurement of inertia force

##### B.2.1 Direct method

Without a test piece attached, operate the compression-shear test machine under the same test conditions as those used when testing. The shear force measured by the load cell is considered as the inertia force (see Figure B.1).

##### B.2.2 Indirect method by means of acceleration

Attach an accelerometer to the compression-shear test machine, and carry out the compression-shear test. Measure the acceleration. The product of the mass of the moving components (excluding the test piece) and the acceleration is the inertia force (Figure B.2).

#### B.3 Correction to allow for inertia force

The inertia force is corrected for using the following equation:

$$Q = Q_a - Q_i$$

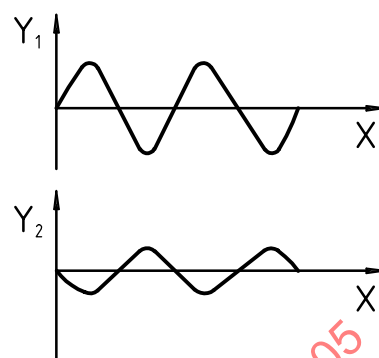
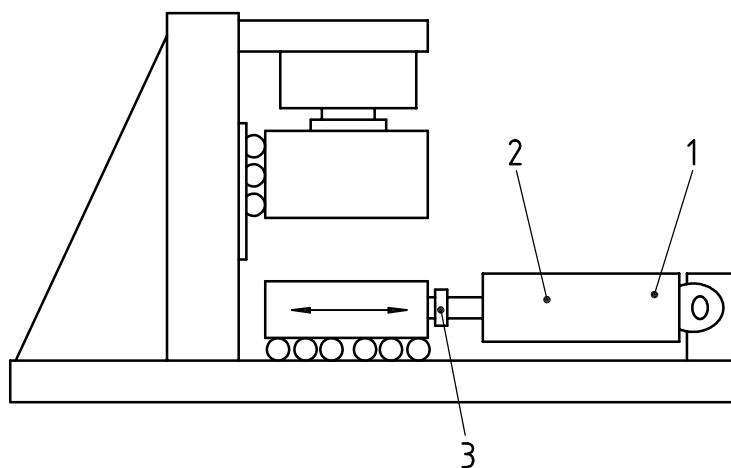
where

$Q$  is the shear force (N);

$Q_a$  is the apparent shear force (N);

$Q_i$  is the inertia force (N).

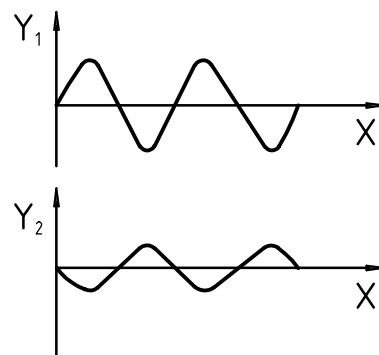
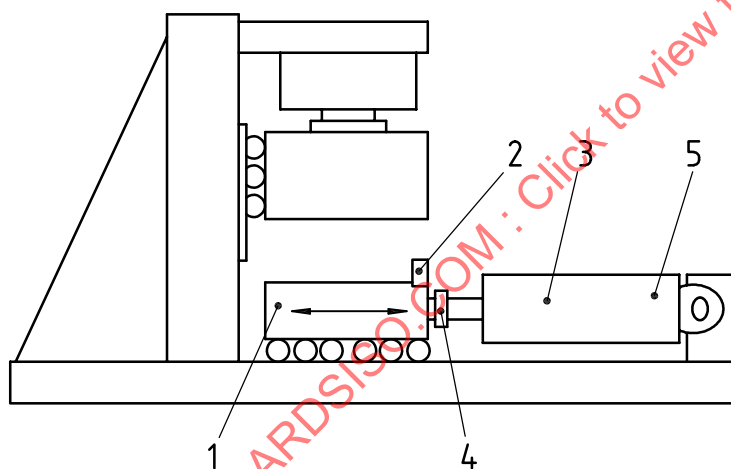
If the inertia force obtained by either method in Clause B.2 is less than 1 % of the apparent shear force that was measured with the test piece attached, then it is not necessary to correct for the inertia force.



**Key**

- X time
- $Y_1$  horizontal displacement
- $Y_2$  inertia force
- 1 horizontal-displacement meter
- 2 horizontal actuator
- 3 horizontal-force load cell

**Figure B.1 — Direct method of determining inertia force**



**Key**

- X time
  - $Y_1$  horizontal displacement
  - $Y_2$  acceleration
- Inertia force = mass  $\times$  acceleration
- 1 known mass,  $m$
  - 2 accelerometer
  - 3 horizontal actuator
  - 4 horizontal-force load cell
  - 5 horizontal-displacement meter

**Figure B.2 — Determination of inertia force from acceleration**



## Annex C (normative)

### Friction force correction

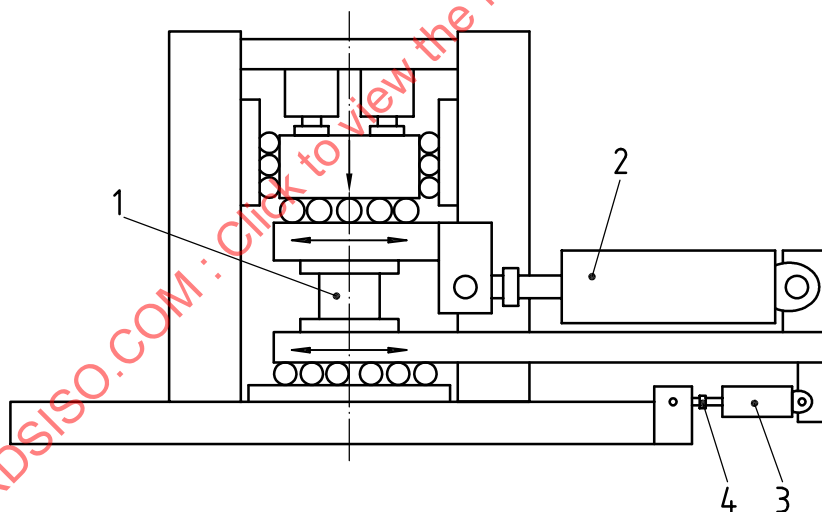
#### C.1 Principle

In the compressive-shear test, the following should be noted. When loading platens and other moving parts have a sliding mechanism, they generate a friction force in the sliding mechanism. The friction force is superimposed on the shear force deforming the isolator and, if the load cell is attached to the actuator (as in Figure C.1), the force recorded is an apparent shear force.

The method specified in this annex measures the friction force of the moving components (excluding the test piece). This friction force is then subtracted from the apparent shear force to obtain the true shear value.

#### C.2 Test machine

As shown in Figure C.1, the compressive-shear testing machine is provided with a friction force measurement load cell and a moving actuator.



#### Key

- 1 standard test piece
- 2 horizontal actuator
- 3 moving actuator
- 4 friction force measurement cell (force measured =  $2F_f$ )

Figure C.1 — Example of friction force correction test machine

#### C.3 Measurement of friction force

Instead of a test isolator, any suitable dummy test piece shall be attached to the machine. It shall be subjected to the same compressive force as that applied by the compressive-shear test machine in the actual test. The actuator in the shear direction is fixed. Under these conditions, the moving actuator shall move the upper and

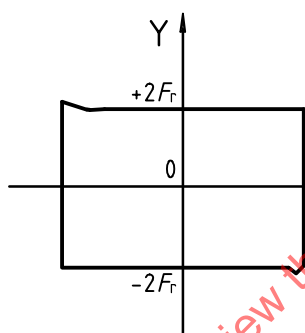
lower loading platens in the same direction. The force required to move the platens shall be measured by the moving actuator.

Half of the measured force value shall be considered as the friction force.

The friction force measured by this method is the friction in two sets of bearings: the upper and the lower. The friction force that is measured as an apparent shear force during a test, however, is the friction in one set of bearings. Therefore, the friction force to be used for correction shall be half the value that is measured by this method.

In some cases, only one set of bearings is used for the slide mechanism in the shear direction. For such test machines, one more identical set of bearings shall be prepared. This set of bearings shall be installed in the place of the dummy test piece, and the friction force shall be measured using the method above.

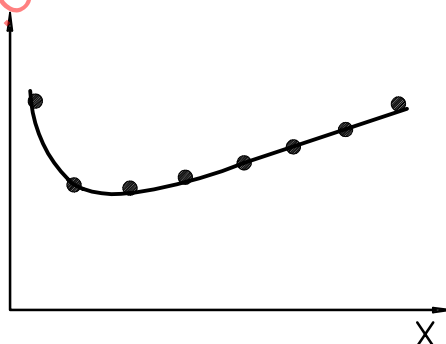
This test should preferably be conducted at various levels of compressive force. For each compressive force, the relation between the moving-actuator displacement and the measured friction force should be obtained, as shown in Figure C.2. The relation between the compressive force and the coefficient of friction should be plotted on a graph as shown in Figure C.3.



#### Key

- X moving-actuator displacement
- Y force measured

**Figure C.2 — Relation between moving-actuator displacement and friction force**



#### Key

- X compressive force
- Y coefficient of friction

**Figure C.3 — Relation between compressive force and coefficient of friction**

#### C.4 Calculation method

The friction force is corrected by the following equation:

$$Q = Q_a - F_r$$

where

$Q$  is the shear force (N);

$Q_a$  is the apparent shear force (N);

$F_r$  is the friction force (N).

If the friction force obtained by either method in Clause C.3 is less than 1 % of the apparent shear force, then it is not necessary to correct for the friction force.

## Annex D (normative)

### Determination of coefficient of linear thermal expansion

#### D.1 Principle

The compression creep test should, in principle, be conducted at  $23\text{ °C} \pm 2\text{ °C}$ . However, because of the length of time required to conduct the test, the test is often conducted at an ambient temperature which is outside this range. By using the coefficient of linear thermal expansion, the value of creep must be converted to that of  $23\text{ °C}$ .

The method specified in this annex measures the height of the rubber bearing when the ambient temperature is changed, and gives the coefficient of linear expansion in the height direction.

#### D.2 Test piece

It is necessary to use elastomeric isolators of the same size as the isolators that are used for the creep test.

#### D.3 Test temperature

The reference temperature is  $23\text{ °C}$ . In addition, any three other temperatures shall be selected in the range between  $0\text{ °C}$  and  $40\text{ °C}$ .

The minimum temperature difference between each of these three other test temperatures shall be  $10\text{ °C}$ .

#### D.4 Conditioning time for a test piece

The conditioning time for each test temperature shall be the same as that specified in 6.2.1.4.2.

#### D.5 Test method

The test piece shall be conditioned at each test temperature under the conditions specified in 6.2.1.4.2, and then the height of the test piece measured to the nearest  $0,01\text{ mm}$ .

#### D.6 Calculation method

The coefficient of linear thermal expansion at each testing temperature is calculated using the following equation:

$$\alpha = \frac{H_T - H_{23}}{h_{23}(T - 23)}$$

where

$\alpha$  is the coefficient of linear thermal expansion (between  $T\text{ °C}$  and  $23\text{ °C}$ );