

# INTERNATIONAL STANDARD

**Plugs and socket-outlets for household and similar purposes –  
Part 2-7: Particular requirements for cord extension sets**

IECNORM.COM : Click to view the full PDF of IEC 60884-2-7:2025 RLV



## THIS PUBLICATION IS COPYRIGHT PROTECTED

Copyright © 2025 IEC, Geneva, Switzerland

All rights reserved. Unless otherwise specified, no part of this publication may be reproduced or utilized in any form or by any means, electronic or mechanical, including photocopying and microfilm, without permission in writing from either IEC or IEC's member National Committee in the country of the requester. If you have any questions about IEC copyright or have an enquiry about obtaining additional rights to this publication, please contact the address below or your local IEC member National Committee for further information.

IEC Secretariat  
3, rue de Varembe  
CH-1211 Geneva 20  
Switzerland

Tel.: +41 22 919 02 11  
[info@iec.ch](mailto:info@iec.ch)  
[www.iec.ch](http://www.iec.ch)

### About the IEC

The International Electrotechnical Commission (IEC) is the leading global organization that prepares and publishes International Standards for all electrical, electronic and related technologies.

### About IEC publications

The technical content of IEC publications is kept under constant review by the IEC. Please make sure that you have the latest edition, a corrigendum or an amendment might have been published.

#### IEC publications search - [webstore.iec.ch/advsearchform](http://webstore.iec.ch/advsearchform)

The advanced search enables to find IEC publications by a variety of criteria (reference number, text, technical committee, ...). It also gives information on projects, replaced and withdrawn publications.

#### IEC Just Published - [webstore.iec.ch/justpublished](http://webstore.iec.ch/justpublished)

Stay up to date on all new IEC publications. Just Published details all new publications released. Available online and once a month by email.

#### IEC Customer Service Centre - [webstore.iec.ch/csc](http://webstore.iec.ch/csc)

If you wish to give us your feedback on this publication or need further assistance, please contact the Customer Service Centre: [sales@iec.ch](mailto:sales@iec.ch).

#### IEC Products & Services Portal - [products.iec.ch](http://products.iec.ch)

Discover our powerful search engine and read freely all the publications previews, graphical symbols and the glossary. With a subscription you will always have access to up to date content tailored to your needs.

#### Electropedia - [www.electropedia.org](http://www.electropedia.org)

The world's leading online dictionary on electrotechnology, containing more than 22 500 terminological entries in English and French, with equivalent terms in 25 additional languages. Also known as the International Electrotechnical Vocabulary (IEV) online.

IECNORM.COM : Click to view the full PDF of IEC 60383-2-1:2025 PLV



IEC 60884-2-7

Edition 2.0 2025-02  
REDLINE VERSION

# INTERNATIONAL STANDARD

---

**Plugs and socket-outlets for household and similar purposes –  
Part 2-7: Particular requirements for cord extension sets**

INTERNATIONAL  
ELECTROTECHNICAL  
COMMISSION

---

ICS 29.120.30

ISBN 978-2-8327-0267-3

**Warning! Make sure that you obtained this publication from an authorized distributor.**

## CONTENTS

FOREWORD .....	4
1 Scope .....	6
2 Normative references .....	6
3 Terms and definitions .....	7
4 General requirements .....	8
5 General remarks on tests .....	9
6 Ratings .....	10
7 Classification .....	10
8 Marking .....	11
9 Checking of dimensions .....	11
10 Protection against electric shock .....	12
11 Provision for earthing .....	12
12 Terminals and terminations .....	12
13 Construction of fixed socket-outlets .....	12
14 Construction of plugs and portable socket-outlets .....	12
15 Interlocked socket-outlets .....	15
16 Resistance to ageing, protection provided by the enclosures, and resistance to humidity .....	15
17 Insulation resistance and electric strength .....	15
18 Operation of earthing contacts .....	15
19 Temperature rise .....	15
20 Breaking capacity .....	15
21 Normal operation .....	15
22 Force necessary to withdraw the plug .....	15
23 Flexible cables and their connection .....	16
24 Mechanical strength .....	16
25 Resistance to heat .....	16
26 Screws, current-carrying parts and connections .....	16
27 Creepage distances, clearances and distances through sealing compound .....	16
28 Resistance of insulating material to abnormal heat, to fire and to tracking .....	16
29 Resistance to rusting .....	16
30 Additional tests on pins provided with insulating sleeves .....	16
31 EMC requirements .....	16
32 Electromagnetic fields (EMF) requirements .....	16
<del>101 EMC requirements .....</del>	<del>16</del>
Annexes .....	18
Annex A (normative) Safety-related routine tests for factory-wired portable accessories (protection against electric shock and correct polarity) .....	18
Annex B (informative) Alternative gripping tests .....	19
Annex C (normative) Switches incorporated in portable socket-outlets .....	19
Annex D (normative) Requirements for plugs and fixed or portable socket-outlets intended to be used with AWG cables .....	19

Annex E (informative) Tests to be applied during the production of crimped connections in accessories .....	19
Annex F (normative) Additional requirements for accessories provided with insulation-piercing terminals .....	19
Annex G (informative) Additional tests and requirements for accessories intended to be used in ambient temperatures below –5 °C down to and including –45 °C.....	20
Annex I (normative) Additional requirements and tests for plugs and socket-outlets for high-load (HL) application .....	20
Bibliography .....	21
Figure 101 – Examples of cord extension sets .....	8
Table 101 – Type and length of the flexible cable and nominal cross-sectional area of the conductors of cord extension sets .....	13

IECNORM.COM : Click to view the full PDF of IEC 60884-2-7:2025 RLV

## INTERNATIONAL ELECTROTECHNICAL COMMISSION

**PLUGS AND SOCKET-OUTLETS FOR HOUSEHOLD  
AND SIMILAR PURPOSES –****Part 2-7: Particular requirements for cord extension sets****FOREWORD**

- 1) The International Electrotechnical Commission (IEC) is a worldwide organization for standardization comprising all national electrotechnical committees (IEC National Committees). The object of IEC is to promote international co-operation on all questions concerning standardization in the electrical and electronic fields. To this end and in addition to other activities, IEC publishes International Standards, Technical Specifications, Technical Reports, Publicly Available Specifications (PAS) and Guides (hereafter referred to as "IEC Publication(s)"). Their preparation is entrusted to technical committees; any IEC National Committee interested in the subject dealt with may participate in this preparatory work. International, governmental and non-governmental organizations liaising with the IEC also participate in this preparation. IEC collaborates closely with the International Organization for Standardization (ISO) in accordance with conditions determined by agreement between the two organizations.
- 2) The formal decisions or agreements of IEC on technical matters express, as nearly as possible, an international consensus of opinion on the relevant subjects since each technical committee has representation from all interested IEC National Committees.
- 3) IEC Publications have the form of recommendations for international use and are accepted by IEC National Committees in that sense. While all reasonable efforts are made to ensure that the technical content of IEC Publications is accurate, IEC cannot be held responsible for the way in which they are used or for any misinterpretation by any end user.
- 4) In order to promote international uniformity, IEC National Committees undertake to apply IEC Publications transparently to the maximum extent possible in their national and regional publications. Any divergence between any IEC Publication and the corresponding national or regional publication shall be clearly indicated in the latter.
- 5) IEC itself does not provide any attestation of conformity. Independent certification bodies provide conformity assessment services and, in some areas, access to IEC marks of conformity. IEC is not responsible for any services carried out by independent certification bodies.
- 6) All users should ensure that they have the latest edition of this publication.
- 7) No liability shall attach to IEC or its directors, employees, servants or agents including individual experts and members of its technical committees and IEC National Committees for any personal injury, property damage or other damage of any nature whatsoever, whether direct or indirect, or for costs (including legal fees) and expenses arising out of the publication, use of, or reliance upon, this IEC Publication or any other IEC Publications.
- 8) Attention is drawn to the Normative references cited in this publication. Use of the referenced publications is indispensable for the correct application of this publication.
- 9) IEC draws attention to the possibility that the implementation of this document may involve the use of (a) patent(s). IEC takes no position concerning the evidence, validity or applicability of any claimed patent rights in respect thereof. As of the date of publication of this document, IEC had not received notice of (a) patent(s), which may be required to implement this document. However, implementers are cautioned that this may not represent the latest information, which may be obtained from the patent database available at <https://patents.iec.ch>. IEC shall not be held responsible for identifying any or all such patent rights.

**This redline version of the official IEC Standard allows the user to identify the changes made to the previous edition IEC 60884-2-7:2011+AMD1:2013 CSV. A vertical bar appears in the margin wherever a change has been made. Additions are in green text, deletions are in strikethrough red text.**

IEC 60884-2-7 has been prepared by subcommittee 23B: Plugs, socket-outlets and switches, of IEC technical committee 23: Electrical accessories. It is an International Standard.

This second edition cancels and replaces the first edition published in 2011, and Amendment 1:2013. This edition constitutes a technical revision.

This edition includes the following significant technical changes with respect to the previous edition:

a) alignment to IEC 60884-1, fourth edition.

The text of this International Standard is based on the following documents:

Draft	Report on voting
23B/1548/FDIS	23B/1562/RVD

Full information on the voting for its approval can be found in the report on voting indicated in the above table.

The language used for the development of this International Standard is English.

This document was drafted in accordance with ISO/IEC Directives, Part 2, and developed in accordance with ISO/IEC Directives, Part 1 and ISO/IEC Directives, IEC Supplement, available at [www.iec.ch/members\\_experts/refdocs](http://www.iec.ch/members_experts/refdocs). The main document types developed by IEC are described in greater detail at [www.iec.ch/publications](http://www.iec.ch/publications).

This document is to be used in conjunction with IEC 60884-1:2022.

This document supplements or modifies the corresponding clauses in IEC 60884-1:2022, so as to convert that publication into the IEC Standard: Particular requirements for cord extension sets.

Where this document states "addition", "modification" or "replacement", the relevant requirement, test specifications or explanatory matter in IEC 60884-1:2022 shall be adapted accordingly.

Subclauses, figures, tables or notes which are additional to those in IEC 60884-1:2022 are numbered starting from 101.

A list of all the parts in the IEC 60884 series, under the general title *Plugs and socket-outlets for household and similar purposes*, can be found on the IEC website.

The committee has decided that the contents of this document will remain unchanged until the stability date indicated on the IEC website under [webstore.iec.ch](http://webstore.iec.ch) in the data related to the specific document. At this date, the document will be

- reconfirmed,
- withdrawn, or
- revised.

# PLUGS AND SOCKET-OUTLETS FOR HOUSEHOLD AND SIMILAR PURPOSES –

## Part 2-7: Particular requirements for cord extension sets

### 1 Scope

#### *Replacement:*

This part of IEC 60884 applies to cord extension sets, rewirable and non-rewirable, with or without earthing contact, with a rated voltage greater than 50 V but not exceeding 440 V and a rated current not exceeding 16 A, intended for household and similar purposes, either indoors or outdoors.

NOTE 1 In the following countries, cord extension sets only for equipment of class II are not allowed: DE, DK and UK ~~and CZ~~.

NOTE 2 ~~In the following country, rewirable cord extension sets are not allowed: ZA.~~

This document does not apply to cord extension sets with means for reeling.

Cord extension sets intended to be used as socket-outlets for furniture are additionally covered by IEC 60884-2-8.

This document also applies to cord extension sets which are intended to be used in a cable reel, and which therefore become cable reels with a detachable flexible cable. For the combination of the cord extension set, the reel requirements and tests of IEC 61242 ~~have to be fulfilled~~ apply in addition.

Cord extension sets are suitable for use at ambient temperatures not normally exceeding +40 °C, but their average temperature over a period of 24 h does not exceed +35 °C, with a lower limit of the ambient air temperature of –5 °C.

NOTE 2 In the following country, cord extension sets comprising a socket-outlet for class II equipment are not permitted; socket-outlets in cord extension sets shall always be Class I as defined in IEC 61140: UK.

### 2 Normative references

The following documents are referred to in the text in such a way that some or all of their content constitutes requirements of this document. For dated references, only the edition cited applies. For undated references, the latest edition of the referenced document (including any amendments) applies.

IEC 60884-1:2022, Clause 2 is applicable with the following exceptions:

#### *Addition:*

IEC 60884-1: ~~2002~~2022, *Plugs and socket-outlets for household and similar purposes – Part 1: General requirements*  
~~Amendment 1 (2006)~~

~~IEC 60884-2-1, *Plugs and socket-outlets for household and similar purposes – Part 2-1: Particular requirements for fused plugs*~~



IEC 60884-2-8:—, *Socket-outlets for furniture*<sup>1</sup>

~~IEC 61242, *Electrical accessories—Cable reels for household and similar purposes*~~

### 3 Terms and definitions

For the purposes of this document, the following terms and definitions apply.

ISO and IEC maintain terminology databases for use in standardization at the following addresses:

- IEC Electropedia: available at <https://www.electropedia.org/>
- ISO Online browsing platform: available at <https://www.iso.org/obp>

IEC 60884-1:2022, Clause 3 is applicable except as follows.

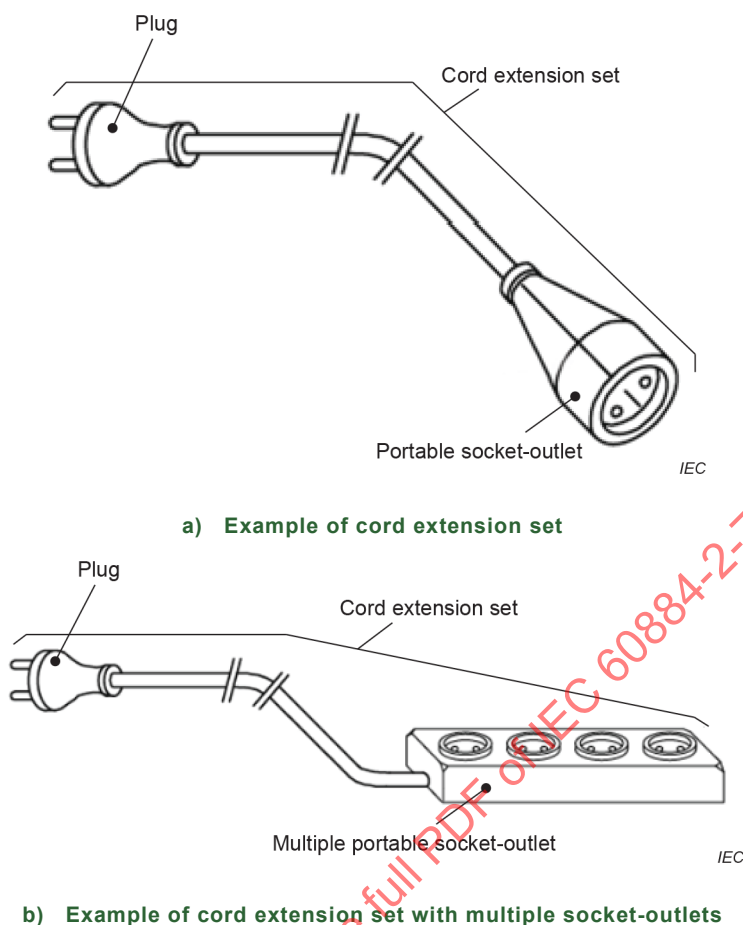
*Replacement of NOTE 3:*

NOTE 3 The term "portable accessory" covers plugs, portable socket-outlets and cord extension sets. Examples of ~~the use of accessories~~ cord extension sets are shown in ~~Figure 1a)~~ of IEC 60884-4 Figure 101.

*Addition of the following figure after Figure 1:*

---

<sup>1</sup> Under preparation. Stage at the time of publication: IEC CDV 60884-2-8:2024.



**Figure 101 – Examples of cord extension sets**

### **3.12** **cord extension set**

*Addition:*

NOTE 101—The term “plug” covers plugs and fused plugs. The term “socket-outlet” covers also socket-outlet with incorporated components such as switches and fuses etc. (see also 14.22).

*Addition:*

#### **3.12.101** **rewirable cord extension set**

cord extension set so constructed that any of the accessories or the flexible cable can be replaced with the aid of a general purpose tool

#### **3.12.102** **non-rewirable cord extension set**

cord extension set so constructed that it forms a complete unit with the flexible cable, the plug and the socket-outlet after connection and assembly by the manufacturer, the disassembly of which makes it permanently unfit for any further use

## **4 General requirements**

IEC 60884-1:2022, Clause 4 is applicable except as follows:

*Addition of the following paragraph at the end of the clause:*

*Components such as plugs, socket-outlets (including multiple socket-outlets) and flexible cables of the cord extension sets shall be ~~fully~~ compliant with, and have been verified against, the relevant product standards for those components.*

*Cord extension sets intended to be used as socket-outlets for furniture shall in addition comply with IEC 60884-2-8.*

## 5 General remarks on tests

*Replacement:*

### 5.1 General

Tests shall be carried out to prove compliance with the requirements laid down in this document.

~~No extra requirements for components (plugs, socket outlets and flexible cables) have to be applied and the relevant tests shall not be repeated.~~

*Tests are carried out as follows:*

- *type tests shall be carried out on representative specimens of each assembly;*
- *routine tests shall be carried out on each assembly manufactured according to this document.*

*Subclauses 5.2 to 5.5 are applicable to type tests and 5.6 to routine tests.*

NOTE In the following country, the following tests are carried out on samples of the cord extension set in accordance with the sampling requirements specified in Clauses 5, 17, 18, 19, 20, 21, 22, 23, 24, 25, 26, 28, 29 and 30: ZA.

### 5.2 Products arrangement during test

*The specimens are tested as delivered and under normal conditions of use.*

### 5.3 Ambient test condition

*Unless otherwise specified, the tests are carried out in the order of the clauses, at an ambient temperature between 15 °C and 35 °C.*

*In case of doubt, the tests are carried out at an ambient temperature of (20 ± 5) °C.*

### 5.4 Additional samples

*Three specimens are subjected to all the relevant tests.*

### 5.5 Compliance general requirement

*The specimens are submitted to all the relevant tests and the requirements are satisfied if all the tests are met.*

*If one specimen does not satisfy a test due to a process fault in the manufacturing of cord extension sets, that test and any preceding one which may have influenced the results of the test shall be repeated, and also the tests which follow shall be made in the required sequence on another full set of specimens, all of which shall comply with the requirements.*

NOTE The applicant ~~may~~ can submit, together with a number of specimens specified in 5.4, the additional set of specimens which ~~may~~ can be required, should one specimen fail. The testing station will then, without further request,

test the additional specimens and will only reject them if a further failure occurs. If the additional set of specimens is not submitted at the same time, the failure of one specimen will entail rejection.

## 5.6 Routine tests

*Routine tests are specified in Annex A.*

## 6 Ratings

IEC 60884-1:2022, Clause 6 is applicable except as follows.

~~Replacement:~~

~~6.2 The rated current of the cord extension set shall be the lowest value from~~

- ~~a) the rated current of the plug; or~~
- ~~b) the arithmetic sum of the highest rated currents of all plugs which can be inserted into the cord extension set; or~~
- ~~c) the rated current of the overcurrent protective device having the smallest rated current.~~

~~The rated voltage of the cord extension set is that of the plug.~~

~~Compliance is checked by inspection of the marking.~~

*Addition:*

### 6.101 Rated voltage

The rated voltage of the cord extension set is that of the plug.

*Compliance is checked by inspection of the marking. In addition, the requirements of 14.103 shall be fulfilled.*

### 6.102 Rated current

The rated current shall be the lowest value of the following:

- the rated current of the plug; or
- the arithmetic sum of the highest rated currents of all plugs which can be simultaneously inserted into the cord extension set; or
- the rated current of the incorporated overcurrent protective device having the smallest rated current, if any.

*Compliance is checked by inspection of the marking. In addition, the requirements of 14.104 shall be fulfilled.*

### 6.103 Power

The power of cord extension sets, when applicable, shall be calculated by multiplying the rated current (as determined in 6.102) and the nominal voltage of the supply system to which it can be connected, with a power factor equal to 1.

NOTE 101 Nominal voltages are defined in IEC 60038.

*Compliance is checked by inspection of the marking.*

## 7 Classification

IEC 60884-1:2022, Clause 7 is not applicable except for 7.1.1, 7.1.2, and 7.1.3 and 7.1.4.

*Replace 7.1.4 of IEC 60884-1:2022 with the following:*

**7.1.4** Classification according to the method of connecting the cable:

**7.1.4.1** rewirable cord extension set;

**7.1.4.2** non-rewirable cord extension set.

## 8 Marking

IEC 60884-1:2022, Clause 8 is applicable except as follows.

### 8.1 General

*Delete the first three dashed ~~texts~~ list items.*

*Add the following paragraphs after the seventh dashed ~~text~~ list item:*

For cord extension sets, the marking of the manufacturer's or responsible vendor's name, trademark or identification mark shall be applied only if the manufacturer of the cord extension set is different from the manufacturer of the socket-outlet.

NOTE 101 The marking of the name, trade mark or identification mark of the manufacturer or responsible vendor ~~may~~ can for example be applied on a sleeve or label provided around the cord.

For a cord extension set, the type reference, which may be a catalogue number, shall be placed on the smallest packaging unit ~~or on the product~~.

*Addition at the end of Subclause 8.1:*

- in the case of multiple portable socket-outlets or when there is an overcurrent protective device, the power in watts.

~~Addition at the end:~~

The marking for power shall be completed by the word MAX. This marking shall be durable and easily legible with normal or corrected vision, without additional magnification.

The power is calculated using the nominal ~~supply~~ voltage of the fixed electrical installation to which it can be connected, the rated current in ~~volts~~ amperes and a power factor  $\cos \varphi = 1$ .

~~NOTE 102 These markings may be shown as in the following examples:~~

NOTE 102 As an example, a 250 V / 16 A cord extension set has nominal supply voltage of 230 V and the corresponding marking would be:

MAX-~~2000~~ 3680 W or ~~2000~~ 3680 W MAX

The maximum admissible power marking shall not be hidden by any inserted plug.

## 9 Checking of dimensions

IEC 60884-1:2022, Clause 9 is not applicable, see Clause 4.

## 10 Protection against electric shock

IEC 60884-1:2022, Clause 10 is not applicable, see Clause 4.

~~Replacement of the text of Clause 10:~~

~~10.1 Cord extension sets shall be so designed and constructed that after they are wired and assembled as for normal use, live parts are not accessible, even after removal of parts which can be removed without the use of a tool.~~

~~Compliance is checked by inspection and, if necessary, by the following test:~~

~~The standard test finger, test probe B of IEC 61032, is applied in every possible position, an electrical indicator with a voltage between 40 V and 50 V being used to show contact with the relevant parts.~~

Replacement:

### ~~10.2~~ 10.101 Accessibility of live parts during normal use

Cord extension sets shall be so designed and constructed that after they are wired and assembled as for normal use, live parts are not accessible, even after removal of parts which can be removed without the use of a tool.

Compliance is checked by inspection and by applying with a test wire of 1,0 mm diameter (see Figure ~~10 8~~ of IEC 60884-1:2022) a force of 1 N where the cable enters the plug and the portable socket-outlet in every possible position.

During this test, it shall not be possible to touch live parts with the gauge.

An electrical indicator with a voltage between 40 V and 50 V shall be used to ensure that there is no electrical contact with the relevant parts.

## 11 Provision for earthing

IEC 60884-1:2022, Clause 11 is not applicable, see Clause 4.

## 12 Terminals and terminations

IEC 60884-1:2022, Clause 12 is not applicable, see Clause 4.

## 13 Construction of fixed socket-outlets

IEC 60884-1:2022, Clause 13 is not applicable.

## 14 Construction of plugs and portable socket-outlets

Replacement of the title of Clause 14:

### 14 Construction of cord extension sets

IEC 60884-1:2022, Clause 14 is applicable except as follows:

*Addition:*

#### **14.4101 Additional requirements for cord extension sets:**

Socket-outlets to be used in cord extension sets shall have shutters.

NOTE 1 In the following countries, socket-outlets to be used in cord extension sets are not required to have shutters: AU, AT, CA, CH, SG, JP, US, DE.

NOTE 2 In the following country, the standards sheets for the portable socket-outlets specify the requirements for shutters: DK.

Plugs and socket-outlets shall comply with the relevant part of the IEC 60884-4 series.

~~Fused plugs shall comply with IEC 60884-2-1.~~

NOTE 3 In the following country, BS 1363 applies to plugs and socket-outlets: UK.

Supply flexible cables shall comply with the IEC 60227 series (for polyvinyl chloride insulated cables) or the IEC 60245 series (for rubber insulated cables).

~~NOTE 4 In the following country BS 1363 applies to fused plugs: UK.~~

~~The flexible cable shall have the same number of conductors as the poles in the socket-outlet(s). Earthing contacts, if any, are considered as one pole.~~

Each pole in the socket-outlet shall be connected to the corresponding pole of the plug.

NOTE 5 4 In the following country, flexible cords to BS6500 or BS7919 are also permitted: UK.

Where an earthing contact is provided in the socket-outlet it shall be connected to the corresponding earthing contact of the plug.

*Compliance is checked by inspection.*

#### **14.2102 Flexible cable**

The type and length of the flexible cable and nominal cross-sectional area of the conductors of cord extension sets shall comply with Table 101.

**Table 101 – Type and length of the flexible cable and nominal cross-sectional area of the conductors of cord extension sets**

Rated current A	Lightest type of flexible cable	Minimum nominal cross-sectional area of the conductors mm <sup>2</sup>	Maximum length of the flexible cable m
2,5	60227 IEC 52	0,50	3
6	60227 IEC 52	0,75	5
	60227 IEC 53	1,00	
10 <sup>c</sup>	60227 IEC 53 or 60245 IEC 53	0,75	5
		1,00	30
13	60227 IEC 53 or 60245 IEC 53	1,00	5
		1,50 <sup>a</sup>	30
16 <sup>c</sup>	60227 IEC 53 or 60245 IEC 53	1,00 <sup>b</sup>	2
		1,50	30

- <sup>a</sup> In the following countries the minimum nominal cross-sectional area is 1,25 mm<sup>2</sup>: UK and SG.
- <sup>b</sup> In the following countries, for cord extension sets with socket-outlet of class I, the minimum nominal cross-sectional area is 1,5 mm<sup>2</sup>: DE, FI.
- <sup>c</sup> In the following country, the minimum nominal cross-sectional area for rated current 10 A is 1.0 mm<sup>2</sup>, and for rated current 16 A is 1,5 mm<sup>2</sup>: CN.

NOTE 1 In the following countries, cord extension sets having a rated current of 6 A and 13 A are not allowed: CH, DE, FI, ~~IT~~ and NO.

NOTE 2 In the following countries, cord extension sets intended for outdoor use should be provided with cable type 60245 IEC 53 or equivalent: FI, NO, SA and SE.

NOTE 3 In the following country, the nominal cross-sectional area is 1,5 mm<sup>2</sup> for 5 m maximum length and 2,5 mm<sup>2</sup> for 30 m maximum length: SA.

NOTE 4 In the following country, the minimum cross-sectional area is 1 mm<sup>2</sup> for 5 m maximum length and 1,5 mm<sup>2</sup> for 30 m maximum length: CH.

NOTE 5 In the following country, cord extension sets rated 10 A shall have an incorporated protection: NO.

The length of the cable is measured between the operating faces of the plug and the socket-outlet. In the case of multiple socket-outlets the measurement is taken to the socket-outlet closest to the plug.

*Compliance is checked by inspection and measurement.*

### **14.3.103 Rated voltage of cord extension set components**

The rated voltage of the plug and the socket-outlet shall be the same. The rated voltage of the cable shall not be less than the rated voltage of the plug and socket-outlet.

*Compliance is checked by inspection.*

### **14.104 Plug rating in a cord extension set**

The rated current of the plug shall not be lower than the rated current of the socket-outlet.

In a cord extension set protected against overload (e.g. having a fused plug or a protective overcurrent device), the rated current of the plug shall not be lower than the rated current of the protective overcurrent device.

For a cord extension set with a multiple portable socket-outlet and not incorporating a protective overcurrent device, the rated current of the plug shall be at least the arithmetic sum of the highest rated currents of all plugs which can be inserted into the cord extension set or the same as the rated current of the relevant socket-outlet of the fixed wiring the plug is intended to be connected to, whichever is the lower.

NOTE 1 In the following country the following part of the last paragraph "rated current of the relevant socket-outlet of the fixed wiring" ~~is~~ shall not ~~be applicable~~ be considered as it is possible to insert a 10 A, 13 A or 16 A plug into a 10 A, 13 A or 16 A socket-outlet: DK.

NOTE 2 In the following country, cord extension sets comprising 3 or more socket-outlets shall be fitted with an overcurrent protective device: ZA.

*Compliance is checked by inspection.*

~~14.4 The rated voltage of the plug and the socket-outlet shall be the same. The rated voltage of the cable shall not be less than the rated voltage of the plug and socket-outlet.~~

~~Compliance is checked by inspection.~~



#### **14.105 Appearance of cord extension sets**

Cord extension sets shall not have an enclosure that is shaped or decorated like a toy.

NOTE Examples of such enclosures are those representing animals, characters, persons or scale models.

*Compliance is checked by inspection.*

### **15 Interlocked socket-outlets**

IEC 60884-1:2022, Clause 15 is not applicable.

### **16 Resistance to ageing, protection provided by the enclosures, and resistance to humidity**

*Replacement:*

The protection degree of the cord extension set is the same as the lowest protection degree of the plug and the portable socket-outlet.

*Compliance is checked by inspection.*

### **17 Insulation resistance and electric strength**

IEC 60884-1:2022, Clause 17 is not applicable, see Clause 4.

### **18 Operation of earthing contacts**

IEC 60884-1:2022, Clause 18 is not applicable, see Clause 4.

### **19 Temperature rise**

IEC 60884-1:2022, Clause 19 is not applicable, see Clause 4.

NOTE In the following country overcurrent protection is electrically shorted out with a link of negligible resistance for the execution of the temperature rise test: ZA.

### **20 Breaking capacity**

IEC 60884-1:2022, Clause 20 is not applicable, see Clause 4.

### **21 Normal operation**

IEC 60884-1:2022, Clause 21 is not applicable, see Clause 4.

### **22 Force necessary to withdraw the plug**

IEC 60884-1:2022, Clause 22 is not applicable, see Clause 4.

## 23 Flexible cables and their connection

IEC 60884-1:2022, Clause 23 is not applicable, see Clause 4.

## 24 Mechanical strength

IEC 60884-1:2022, Clause 24 is not applicable, see Clause 4.

## 25 Resistance to heat

IEC 60884-1:2022, Clause 25 is not applicable, see Clause 4.

## 26 Screws, current-carrying parts and connections

IEC 60884-1:2022, Clause 26 is not applicable, see Clause 4.

## 27 Creepage distances, clearances and distances through sealing compound

IEC 60884-1:2022, Clause 27 is not applicable, see Clause 4.

## 28 Resistance of insulating material to abnormal heat, to fire and to tracking

IEC 60884-1:2022, Clause 28 is not applicable, see Clause 4.

## 29 Resistance to rusting

IEC 60884-1:2022, Clause 29 is not applicable, see Clause 4.

## 30 Additional tests on pins provided with insulating sleeves

IEC 60884-1:2022, Clause 30 is not applicable, see Clause 4.

## 31 EMC requirements

IEC 60884-1:2022, Clause 31 is applicable.

## 32 Electromagnetic fields (EMF) requirements

IEC 60884-1:2022, Clause 32 is applicable.

### *Addition:*

## ~~101 EMC requirements~~

### ~~101.1 Immunity~~

~~The operation of cord extension sets within the scope of this standard, in normal use, is not affected by electromagnetic disturbances.~~

**~~101.2 Emission~~**

~~Cord extension sets within the scope of this standard are intended for continuous use; in normal use they do not generate electromagnetic disturbances.~~

IECNORM.COM : Click to view the full PDF of IEC 60884-2-7:2025 RLV

## Annexes

The annexes of IEC 60884-1:2022 are applicable except as follows:

### Annex A (normative)

#### Safety-related routine tests for factory-wired portable accessories (protection against electric shock and correct polarity)

IEC 60884-1:2022, Annex A is applicable with the following modifications:

##### A.1 General remarks

*Replacement of the first paragraph:*

All factory-wired cord extension sets shall be subjected to the following tests, as appropriate. ~~A diagrammatic representation is shown in Table A.1.~~

##### A.2 Polarized systems, phase (L) and neutral (N) – Correct connection

*Modification of the second dashed ~~text in NOTE 1~~ list item:*

- for cord extension sets, between the L and N pin of plug at one end of the cable and the last corresponding L and N contact of the portable socket-outlet at the other end of the cable. In case of doubt all the connections shall be verified.

##### A.3 Earth continuity

*Modification of the second dashed ~~text in NOTE 1~~ list item:*

- for cord extension sets, between the corresponding earth pin or earthing contact of the plug and the last earthing contact or pin of the portable socket-outlet at the other end of the cable. In case of doubt all the connections shall be verified.

##### A.4 Short-circuit/wrong connection and reduction of creepage distance and clearances between phase (L) or neutral (N) to earth (⊥)

*Delete Table A.1.*

**Annex B**  
(informative)

**Alternative gripping tests**

IEC 60884-1:2022, Annex B is not applicable.

**Annex C**  
(normative)

**Switches incorporated in portable socket-outlets**

IEC 60884-1:2022, Annex C is not applicable.

**Annex D**  
(normative)

**Requirements for plugs and fixed or portable socket-outlets  
intended to be used with AWG cables**

IEC 60884-1:2022, Annex D is not applicable.

**Annex E**  
(informative)

**Tests to be applied during the production of crimped  
connections in accessories**

IEC 60884-1:2022, Annex E is not applicable.

**Annex F**  
(normative)

**Additional requirements for accessories provided  
with insulation-piercing terminals**

IEC 60884-1:2022, Annex F is not applicable.

## **Annex G** (informative)

### **Additional tests and requirements for accessories intended to be used in ambient temperatures below –5 °C down to and including –45 °C**

IEC 60884-1:2022, Annex G is applicable with the following addition:

#### **G.4.101 Requirements for flexible cables**

Flexible cables used in cord extension sets intended to be used in ambient temperatures below –5 °C down to and including –45 °C shall be suitable for use at the declared cold temperatures.

*Compliance is checked by inspection.*

## **Annex I** (normative)

### **Additional requirements and tests for plugs and socket-outlets for high-load (HL) application**

IEC 60884-1:2022, Annex I is not applicable.

IECNORM.COM : Click to view the full PDF of IEC 60884-2-7:2025 RLV

## Bibliography

IEC 60884-2-1, *Plugs and socket-outlets for household and similar purposes – Part 2-1: Particular requirements for fused plugs*

IEC 61242, *Electrical accessories – Cable reels for household and similar purposes*

---

IECNORM.COM : Click to view the full PDF of IEC 60884-2-7:2025 RLV

IECNORM.COM : Click to view the full PDF of IEC 60884-2-7:2025 RLV



# INTERNATIONAL STANDARD

**Plugs and socket-outlets for household and similar purposes –  
Part 2-7: Particular requirements for cord extension sets**

IECNORM.COM : Click to view the full PDF of IEC 60884-2-7:2025 RLV

## CONTENTS

FOREWORD .....	4
1 Scope .....	6
2 Normative references .....	6
3 Terms and definitions .....	7
4 General requirements .....	8
5 General remarks on tests .....	8
6 Ratings .....	9
7 Classification .....	10
8 Marking .....	10
9 Checking of dimensions .....	10
10 Protection against electric shock .....	11
11 Provision for earthing .....	11
12 Terminals and terminations .....	11
13 Construction of fixed socket-outlets .....	11
14 Construction of plugs and portable socket-outlets .....	11
15 Interlocked socket-outlets .....	13
16 Resistance to ageing, protection provided by the enclosures, and resistance to humidity .....	13
17 Insulation resistance and electric strength .....	14
18 Operation of earthing contacts .....	14
19 Temperature rise .....	14
20 Breaking capacity .....	14
21 Normal operation .....	14
22 Force necessary to withdraw the plug .....	14
23 Flexible cables and their connection .....	14
24 Mechanical strength .....	14
25 Resistance to heat .....	14
26 Screws, current-carrying parts and connections .....	14
27 Creepage distances, clearances and distances through sealing compound .....	14
28 Resistance of insulating material to abnormal heat, to fire and to tracking .....	15
29 Resistance to rusting .....	15
30 Additional tests on pins provided with insulating sleeves .....	15
31 EMC requirements .....	15
32 Electromagnetic fields (EMF) requirements .....	15
Annexes .....	16
Annex A (normative) Safety-related routine tests for factory-wired portable accessories (protection against electric shock and correct polarity) .....	16
Annex B (informative) Alternative gripping tests .....	17
Annex C (normative) Switches incorporated in portable socket-outlets .....	17
Annex D (normative) Requirements for plugs and fixed or portable socket-outlets intended to be used with AWG cables .....	17
Annex E (informative) Tests to be applied during the production of crimped connections in accessories .....	17

Annex F (normative) Additional requirements for accessories provided with insulation-piercing terminals .....	17
Annex G (informative) Additional tests and requirements for accessories intended to be used in ambient temperatures below –5 °C down to and including –45 °C.....	18
Annex I (normative) Additional requirements and tests for plugs and socket-outlets for high-load (HL) application .....	18
Bibliography .....	19
 Figure 101 – Examples of cord extension sets .....	 7
 Table 101 – Type and length of the flexible cable and nominal cross-sectional area of the conductors of cord extension sets .....	 12

IECNORM.COM : Click to view the full PDF of IEC 60884-2-7:2025 RLV

## INTERNATIONAL ELECTROTECHNICAL COMMISSION

**PLUGS AND SOCKET-OUTLETS FOR HOUSEHOLD  
AND SIMILAR PURPOSES –****Part 2-7: Particular requirements for cord extension sets****FOREWORD**

- 1) The International Electrotechnical Commission (IEC) is a worldwide organization for standardization comprising all national electrotechnical committees (IEC National Committees). The object of IEC is to promote international co-operation on all questions concerning standardization in the electrical and electronic fields. To this end and in addition to other activities, IEC publishes International Standards, Technical Specifications, Technical Reports, Publicly Available Specifications (PAS) and Guides (hereafter referred to as "IEC Publication(s)"). Their preparation is entrusted to technical committees; any IEC National Committee interested in the subject dealt with may participate in this preparatory work. International, governmental and non-governmental organizations liaising with the IEC also participate in this preparation. IEC collaborates closely with the International Organization for Standardization (ISO) in accordance with conditions determined by agreement between the two organizations.
- 2) The formal decisions or agreements of IEC on technical matters express, as nearly as possible, an international consensus of opinion on the relevant subjects since each technical committee has representation from all interested IEC National Committees.
- 3) IEC Publications have the form of recommendations for international use and are accepted by IEC National Committees in that sense. While all reasonable efforts are made to ensure that the technical content of IEC Publications is accurate, IEC cannot be held responsible for the way in which they are used or for any misinterpretation by any end user.
- 4) In order to promote international uniformity, IEC National Committees undertake to apply IEC Publications transparently to the maximum extent possible in their national and regional publications. Any divergence between any IEC Publication and the corresponding national or regional publication shall be clearly indicated in the latter.
- 5) IEC itself does not provide any attestation of conformity. Independent certification bodies provide conformity assessment services and, in some areas, access to IEC marks of conformity. IEC is not responsible for any services carried out by independent certification bodies.
- 6) All users should ensure that they have the latest edition of this publication.
- 7) No liability shall attach to IEC or its directors, employees, servants or agents including individual experts and members of its technical committees and IEC National Committees for any personal injury, property damage or other damage of any nature whatsoever, whether direct or indirect, or for costs (including legal fees) and expenses arising out of the publication, use of, or reliance upon, this IEC Publication or any other IEC Publications.
- 8) Attention is drawn to the Normative references cited in this publication. Use of the referenced publications is indispensable for the correct application of this publication.
- 9) IEC draws attention to the possibility that the implementation of this document may involve the use of (a) patent(s). IEC takes no position concerning the evidence, validity or applicability of any claimed patent rights in respect thereof. As of the date of publication of this document, IEC had not received notice of (a) patent(s), which may be required to implement this document. However, implementers are cautioned that this may not represent the latest information, which may be obtained from the patent database available at <https://patents.iec.ch>. IEC shall not be held responsible for identifying any or all such patent rights.

IEC 60884-2-7 has been prepared by subcommittee 23B: Plugs, socket-outlets and switches, of IEC technical committee 23: Electrical accessories. It is an International Standard.

This second edition cancels and replaces the first edition published in 2011, and Amendment 1:2013. This edition constitutes a technical revision.

This edition includes the following significant technical changes with respect to the previous edition:

- a) alignment to IEC 60884-1, fourth edition.

The text of this International Standard is based on the following documents:

Draft	Report on voting
23B/1548/FDIS	23B/1562/RVD

Full information on the voting for its approval can be found in the report on voting indicated in the above table.

The language used for the development of this International Standard is English.

This document was drafted in accordance with ISO/IEC Directives, Part 2, and developed in accordance with ISO/IEC Directives, Part 1 and ISO/IEC Directives, IEC Supplement, available at [www.iec.ch/members\\_experts/refdocs](http://www.iec.ch/members_experts/refdocs). The main document types developed by IEC are described in greater detail at [www.iec.ch/publications](http://www.iec.ch/publications).

This document is to be used in conjunction with IEC 60884-1:2022.

This document supplements or modifies the corresponding clauses in IEC 60884-1:2022, so as to convert that publication into the IEC Standard: Particular requirements for cord extension sets.

Where this document states "addition", "modification" or "replacement", the relevant requirement, test specifications or explanatory matter in IEC 60884-1:2022 shall be adapted accordingly.

Subclauses, figures, tables or notes which are additional to those in IEC 60884-1:2022 are numbered starting from 101.

A list of all the parts in the IEC 60884 series, under the general title *Plugs and socket-outlets for household and similar purposes*, can be found on the IEC website.

The committee has decided that the contents of this document will remain unchanged until the stability date indicated on the IEC website under [webstore.iec.ch](http://webstore.iec.ch) in the data related to the specific document. At this date, the document will be

- reconfirmed,
- withdrawn, or
- revised.

## PLUGS AND SOCKET-OUTLETS FOR HOUSEHOLD AND SIMILAR PURPOSES –

### Part 2-7: Particular requirements for cord extension sets

#### 1 Scope

##### *Replacement:*

This part of IEC 60884 applies to cord extension sets, rewirable and non-rewirable, with or without earthing contact, with a rated voltage greater than 50 V but not exceeding 440 V and a rated current not exceeding 16 A, intended for household and similar purposes, either indoors or outdoors.

NOTE 1 In the following countries, cord extension sets only for equipment of class II are not allowed: DE, DK and UK.

This document does not apply to cord extension sets with means for reeling.

Cord extension sets intended to be used as socket-outlets for furniture are additionally covered by IEC 60884-2-8.

This document also applies to cord extension sets which are intended to be used in a cable reel, and which therefore become cable reels with a detachable flexible cable. For the combination of the cord extension set, the reel requirements and tests of IEC 61242 apply in addition.

Cord extension sets are suitable for use at ambient temperatures not normally exceeding +40 °C, but their average temperature over a period of 24 h does not exceed +35 °C, with a lower limit of the ambient air temperature of –5 °C.

NOTE 2 In the following country, cord extension sets comprising a socket-outlet for class II equipment are not permitted; socket-outlets in cord extension sets shall always be Class I as defined in IEC 61140: UK.

#### 2 Normative references

The following documents are referred to in the text in such a way that some or all of their content constitutes requirements of this document. For dated references, only the edition cited applies. For undated references, the latest edition of the referenced document (including any amendments) applies.

IEC 60884-1:2022, Clause 2 is applicable with the following exceptions:

##### *Addition:*

IEC 60884-1:2022, *Plugs and socket-outlets for household and similar purposes – Part 1: General requirements*

IEC 60884-2-8:—, *Socket-outlets for furniture*<sup>1</sup>

---

<sup>1</sup> Under preparation. Stage at the time of publication: IEC CDV 60884-2-8:2024.

### 3 Terms and definitions

For the purposes of this document, the following terms and definitions apply.

ISO and IEC maintain terminology databases for use in standardization at the following addresses:

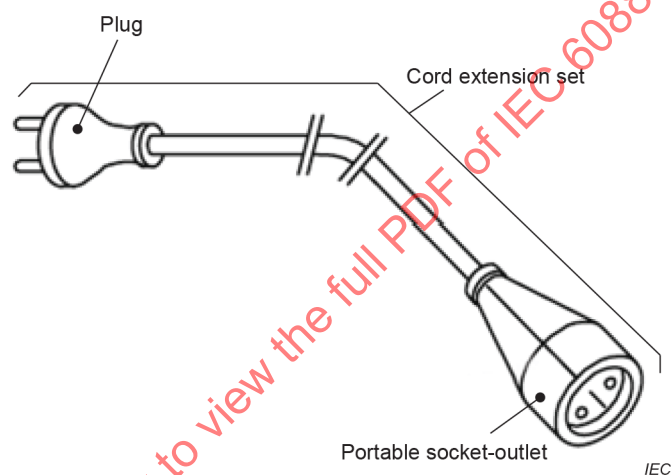
- IEC Electropedia: available at <https://www.electropedia.org/>
- ISO Online browsing platform: available at <https://www.iso.org/obp>

IEC 60884-1:2022, Clause 3 is applicable except as follows.

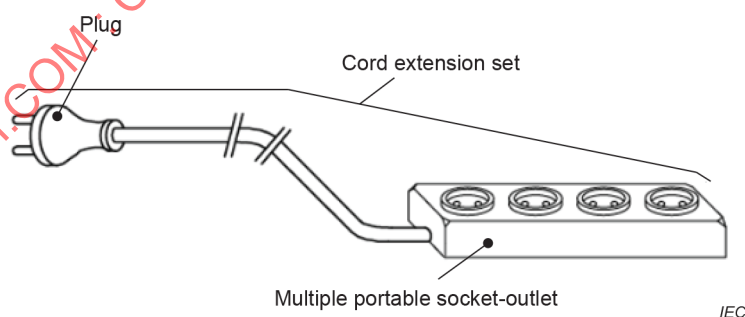
*Replacement of NOTE 3:*

NOTE 3 The term "portable accessory" covers plugs, portable socket-outlets and cord extension sets. Examples of cord extension sets are shown in Figure 101.

*Addition of the following figure after Figure 1:*



a) Example of cord extension set



b) Example of cord extension set with multiple socket-outlets

**Figure 101 – Examples of cord extension sets**

*Addition:*

#### 3.101

##### **rewirable cord extension set**

cord extension set so constructed that any of the accessories or the flexible cable can be replaced with the aid of a general purpose tool

### 3.102

#### **non-rewirable cord extension set**

cord extension set so constructed that it forms a complete unit with the flexible cable, the plug and the socket-outlet after connection and assembly by the manufacturer, the disassembly of which makes it permanently unfit for any further use

## **4 General requirements**

IEC 60884-1:2022, Clause 4 is applicable except as follows:

*Addition of the following paragraph at the end of the clause:*

*Components such as plugs, socket-outlets (including multiple socket-outlets) and flexible cables of the cord extension sets shall be compliant with, and have been verified against, the relevant product standards for those components.*

*Cord extension sets intended to be used as socket-outlets for furniture shall in addition comply with IEC 60884-2-8.*

## **5 General remarks on tests**

*Replacement:*

### **5.1 General**

Tests shall be carried out to prove compliance with the requirements laid down in this document.

*Tests are carried out as follows:*

- *type tests shall be carried out on representative specimens of each assembly;*
- *routine tests shall be carried out on each assembly manufactured according to this document.*

*Subclauses 5.2 to 5.5 are applicable to type tests and 5.6 to routine tests.*

NOTE In the following country, the following tests are carried out on samples of the cord extension set in accordance with the sampling requirements specified in Clauses 5, 17, 18, 19, 20, 21, 22, 23, 24, 25, 26, 28, 29 and 30: ZA.

### **5.2 Products arrangement during test**

*The specimens are tested as delivered and under normal conditions of use.*

### **5.3 Ambient test condition**

*Unless otherwise specified, the tests are carried out in the order of the clauses, at an ambient temperature between 15 °C and 35 °C.*

*In case of doubt, the tests are carried out at an ambient temperature of (20 ± 5) °C.*

### **5.4 Additional samples**

*Three specimens are subjected to all the relevant tests.*



## 5.5 Compliance general requirement

*The specimens are submitted to all the relevant tests and the requirements are satisfied if all the tests are met.*

*If one specimen does not satisfy a test due to a process fault in the manufacturing of cord extension sets, that test and any preceding one which may have influenced the results of the test shall be repeated, and also the tests which follow shall be made in the required sequence on another full set of specimens, all of which shall comply with the requirements.*

NOTE The applicant can submit, together with a number of specimens specified in 5.4, the additional set of specimens which can be required, should one specimen fail. The testing station will then, without further request, test the additional specimens and will only reject them if a further failure occurs. If the additional set of specimens is not submitted at the same time, the failure of one specimen will entail rejection.

## 5.6 Routine tests

*Routine tests are specified in Annex A.*

## 6 Ratings

IEC 60884-1:2022, Clause 6 is applicable except as follows.

*Addition:*

### 6.101 Rated voltage

The rated voltage of the cord extension set is that of the plug.

*Compliance is checked by inspection of the marking. In addition, the requirements of 14.103 shall be fulfilled.*

### 6.102 Rated current

The rated current shall be the lowest value of the following:

- the rated current of the plug; or
- the arithmetic sum of the highest rated currents of all plugs which can be simultaneously inserted into the cord extension set; or
- the rated current of the incorporated overcurrent protective device having the smallest rated current, if any.

*Compliance is checked by inspection of the marking. In addition, the requirements of 14.104 shall be fulfilled.*

### 6.103 Power

The power of cord extension sets, when applicable, shall be calculated by multiplying the rated current (as determined in 6.102) and the nominal voltage of the supply system to which it can be connected, with a power factor equal to 1.

NOTE 101 Nominal voltages are defined in IEC 60038.

*Compliance is checked by inspection of the marking.*

## 7 Classification

IEC 60884-1:2022, Clause 7 is not applicable except for 7.1.1, 7.1.2, 7.1.3 and 7.1.4.

*Replace 7.1.4 of IEC 60884-1:2022 with the following:*

**7.1.4** Classification according to the method of connecting the cable:

**7.1.4.1** rewirable cord extension set;

**7.1.4.2** non-rewirable cord extension set.

## 8 Marking

IEC 60884-1:2022, Clause 8 is applicable except as follows.

### 8.1 General

*Delete the first three dashed list items.*

*Add the following paragraphs after the seventh dashed list item:*

For cord extension sets, the marking of the manufacturer's or responsible vendor's name, trademark or identification mark shall be applied only if the manufacturer of the cord extension set is different from the manufacturer of the socket-outlet.

NOTE 101 The marking of the name, trade mark or identification mark of the manufacturer or responsible vendor can for example be applied on a sleeve or label provided around the cord.

For a cord extension set, the type reference, which may be a catalogue number, shall be placed on the smallest packaging unit or on the product.

*Addition at the end of Subclause 8.1:*

- in the case of multiple portable socket-outlets or when there is an overcurrent protective device, the power in watts.

The marking for power shall be completed by the word MAX. This marking shall be durable and easily legible with normal or corrected vision, without additional magnification.

The power is calculated using the nominal voltage of the fixed electrical installation to which it can be connected, the rated current in amperes and a power factor  $\cos \varphi = 1$ .

NOTE 102 As an example, a 250 V / 16 A cord extension set has nominal supply voltage of 230 V and the corresponding marking would be:

MAX 3680 W or 3680 W MAX

The maximum admissible power marking shall not be hidden by any inserted plug.

## 9 Checking of dimensions

IEC 60884-1:2022, Clause 9 is not applicable, see Clause 4.

## 10 Protection against electric shock

IEC 60884-1:2022, Clause 10 is not applicable, see Clause 4.

*Replacement:*

### 10.101 Accessibility of live parts during normal use

Cord extension sets shall be so designed and constructed that after they are wired and assembled as for normal use, live parts are not accessible, even after removal of parts which can be removed without the use of a tool.

*Compliance is checked by inspection and by applying with a test wire of 1,0 mm diameter (see Figure 8 of IEC 60884-1:2022) a force of 1 N where the cable enters the plug and the portable socket-outlet in every possible position.*

*During this test, it shall not be possible to touch live parts with the gauge.*

*An electrical indicator with a voltage between 40 V and 50 V shall be used to ensure that there is no electrical contact with the relevant parts.*

## 11 Provision for earthing

IEC 60884-1:2022, Clause 11 is not applicable, see Clause 4.

## 12 Terminals and terminations

IEC 60884-1:2022, Clause 12 is not applicable, see Clause 4.

## 13 Construction of fixed socket-outlets

IEC 60884-1:2022, Clause 13 is not applicable.

## 14 Construction of plugs and portable socket-outlets

*Replacement of the title of Clause 14:*

### 14 Construction of cord extension sets

IEC 60884-1:2022, Clause 14 is applicable except as follows:

*Addition:*

#### 14.101 Additional requirements for cord extension sets:

Socket-outlets to be used in cord extension sets shall have shutters.

NOTE 1 In the following countries, socket-outlets to be used in cord extension sets are not required to have shutters: AU, AT, CA, CH, SG, JP, US, DE.

NOTE 2 In the following country, the standards sheets for the portable socket-outlets specify the requirements for shutters: DK.

Plugs and socket-outlets shall comply with the relevant part of the IEC 60884 series.

NOTE 3 In the following country, BS 1363 applies to plugs and socket-outlets: UK.

Supply flexible cables shall comply with the IEC 60227 series (for polyvinyl chloride insulated cables) or the IEC 60245 series (for rubber insulated cables).

Each pole in the socket-outlet shall be connected to the corresponding pole of the plug.

NOTE 4 In the following country, flexible cords to BS6500 or BS7919 are also permitted: UK.

Where an earthing contact is provided in the socket-outlet it shall be connected to the corresponding earthing contact of the plug.

*Compliance is checked by inspection.*

#### 14.102 Flexible cable

The type and length of the flexible cable and nominal cross-sectional area of the conductors of cord extension sets shall comply with Table 101.

**Table 101 – Type and length of the flexible cable and nominal cross-sectional area of the conductors of cord extension sets**

Rated current	Lightest type of flexible cable	Minimum nominal cross-sectional area of the conductors	Maximum length of the flexible cable
A		mm <sup>2</sup>	m
2,5	60227 IEC 52	0,50	3
6	60227 IEC 52	0,75	5
	60227 IEC 53	1,00	
10 <sup>c</sup>	60227 IEC 53 or 60245 IEC 53	0,75	5
		1,00	30
13	60227 IEC 53 or 60245 IEC 53	1,00	5
		1,50 <sup>a</sup>	30
16 <sup>c</sup>	60227 IEC 53 or 60245 IEC 53	1,00 <sup>b</sup>	2
		1,50	30
<sup>a</sup> In the following countries the minimum nominal cross-sectional area is 1,25 mm <sup>2</sup> : UK and SG.			
<sup>b</sup> In the following countries, for cord extension sets with socket-outlet of class I, the minimum nominal cross-sectional area is 1,5 mm <sup>2</sup> : DE, FI.			
<sup>c</sup> In the following country, the minimum nominal cross-sectional area for rated current 10 A is 1.0 mm <sup>2</sup> , and for rated current 16 A is 1,5 mm <sup>2</sup> : CN.			

NOTE 1 In the following countries, cord extension sets having a rated current of 6 A and 13 A are not allowed: CH, DE, FI and NO.

NOTE 2 In the following countries, cord extension sets intended for outdoor use should be provided with cable type 60245 IEC 53 or equivalent: FI, NO, SA and SE.

NOTE 3 In the following country, the nominal cross-sectional area is 1,5 mm<sup>2</sup> for 5 m maximum length and 2,5 mm<sup>2</sup> for 30 m maximum length: SA.

NOTE 4 In the following country, the minimum cross-sectional area is 1 mm<sup>2</sup> for 5 m maximum length and 1,5 mm<sup>2</sup> for 30 m maximum length: CH.

NOTE 5 In the following country, cord extension sets rated 10 A shall have an incorporated protection: NO.